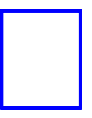
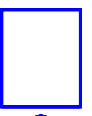


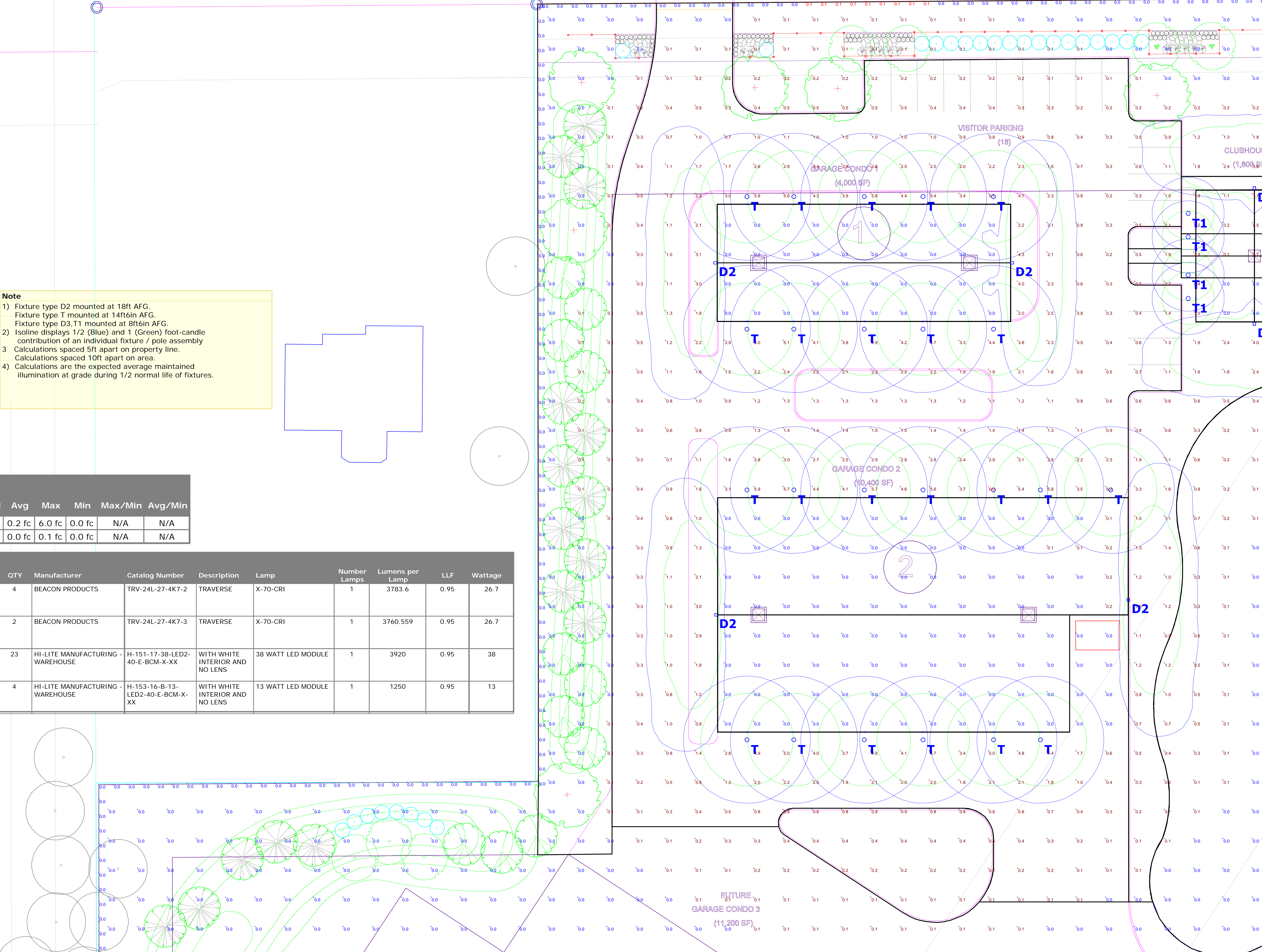


**Note**

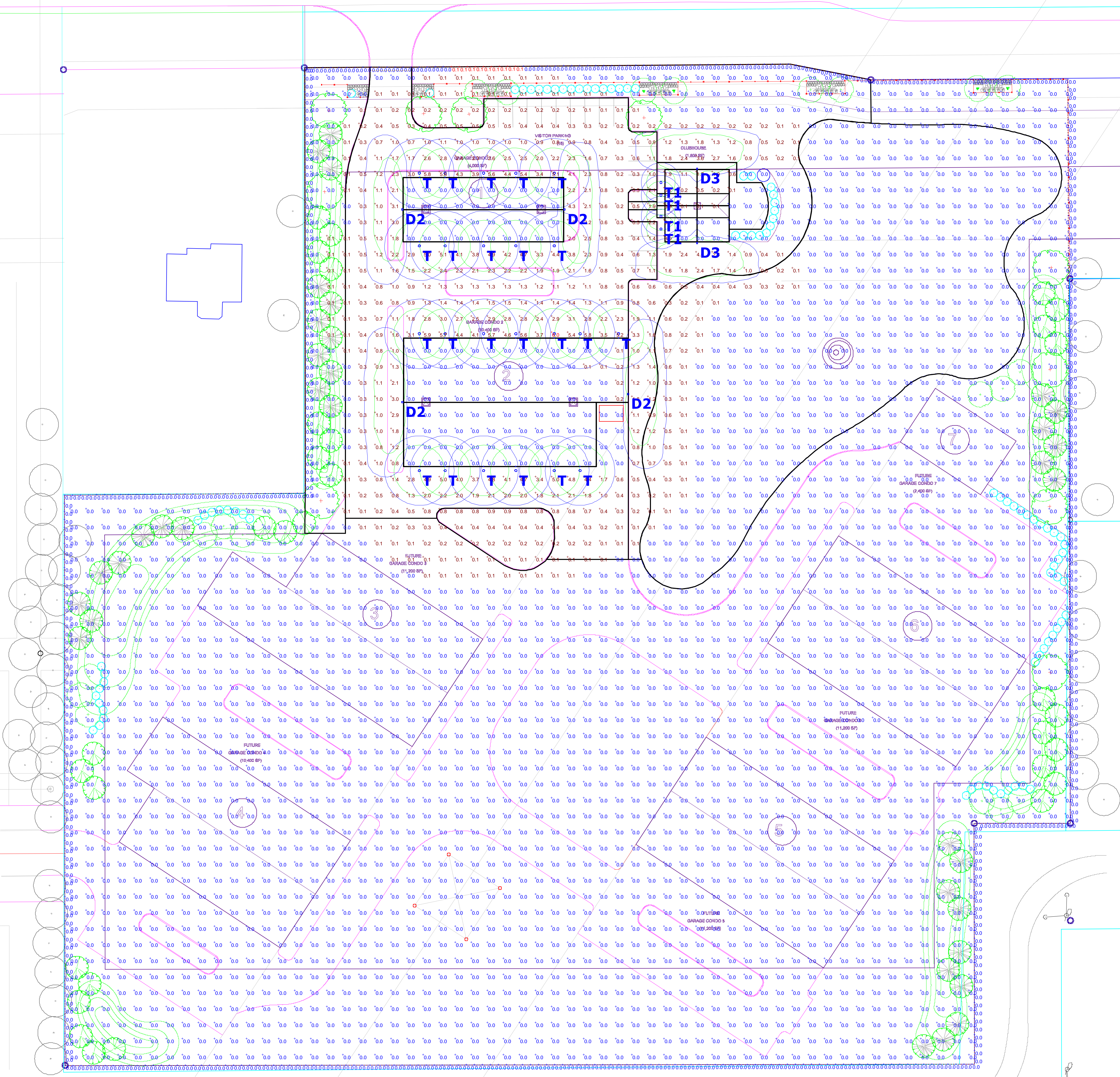
1) Fixture type D2 mounted at 18ft AFG.  
Fixture type T mounted at 14ft6in AFG.  
Fixture type D3,T1 mounted at 8ft6in AFG.  
2) Isoline displays 1/2 (Blue) and 1 (Green) foot-candle contribution of an individual fixture / pole assembly  
3) Calculations spaced 5ft apart on property line.  
Calculations spaced 10ft apart on area.  
4) Calculations are the expected average maintained illumination at grade during 1/2 normal life of fixtures.

Statistics						
Description	Symbol	Avg	Max	Min	Max/Min	Avg/Min
Calc Zone #2	+	0.2 fc	6.0 fc	0.0 fc	N/A	N/A
Property Line	+	0.0 fc	0.1 fc	0.0 fc	N/A	N/A

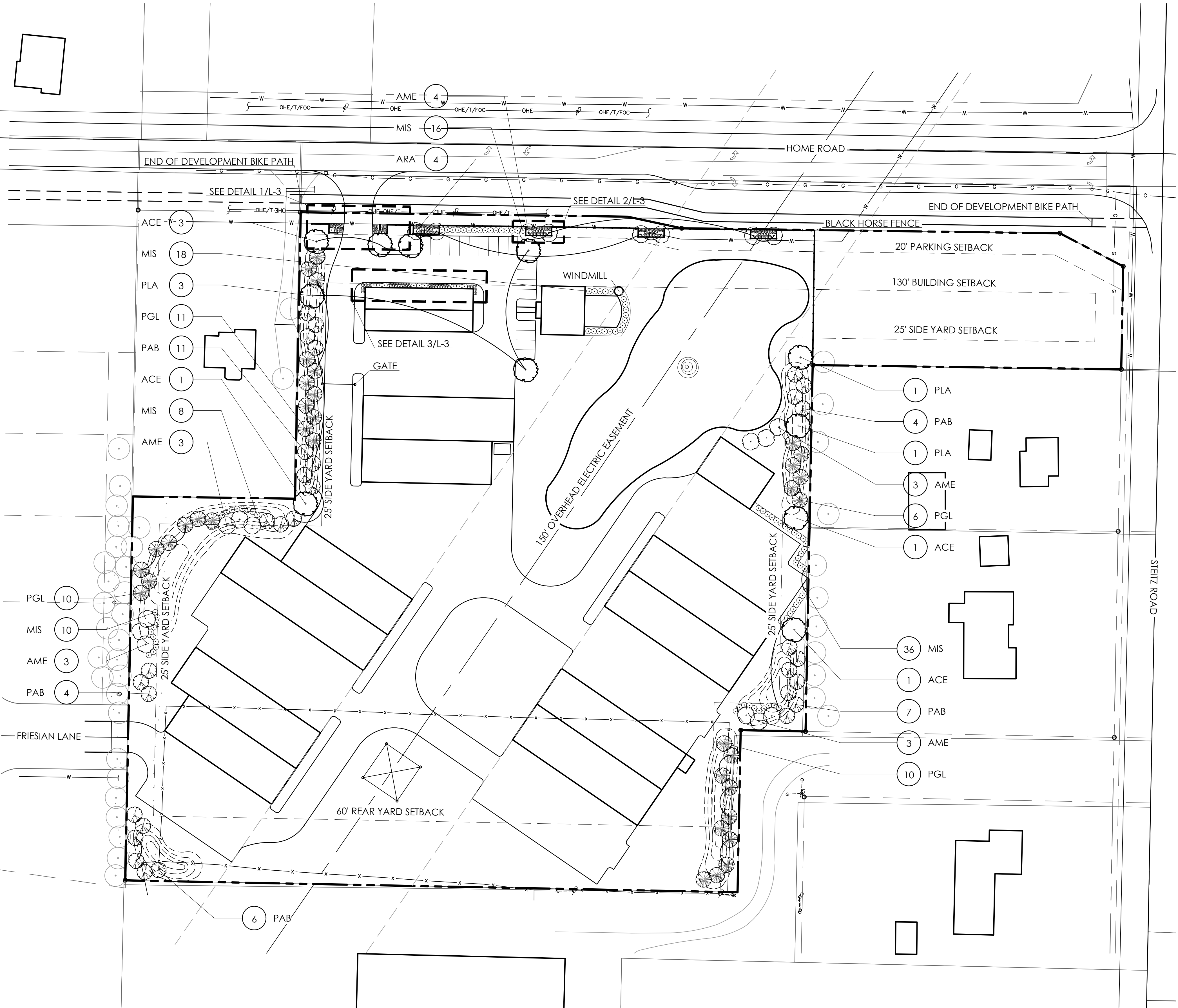
Schedule										
Symbol	Label	QTY	Manufacturer	Catalog Number	Description	Lamp	Number Lamps	Lumens per Lamp	LLF	Wattage
	D2	4	BEACON PRODUCTS	TRV-24L-27-4K7-2	TRAVERSE	X-70-CRI	1	3783.6	0.95	26.7
	D3	2	BEACON PRODUCTS	TRV-24L-27-4K7-3	TRAVERSE	X-70-CRI	1	3760.559	0.95	26.7
	T	23	HI-LITE MANUFACTURING - WAREHOUSE	H-151-17-38-LED2-40-E-BCM-X-XX	WITH WHITE INTERIOR AND NO LENS	38 WATT LED MODULE	1	3920	0.95	38
	T1	4	HI-LITE MANUFACTURING - WAREHOUSE	H-153-16-B-13-LED2-40-E-BCM-X-XX	WITH WHITE INTERIOR AND NO LENS	13 WATT LED MODULE	1	1250	0.95	13



FRIESIAN LANE  
60' R/W



1-



PLANT LIST  
(CONTRACTOR RESPONSIBLE FOR ALL PLANTS SHOWN ON PLAN)

QTY	KEY	BOTANICAL NAME	COMMON NAME	SIZE	COND.	REMARKS
TREES						
31	PAB	PICEA ABIES	NORWAY SPRUCE	6'-7' HGT.	B&B	
35	PGL	PICEA GLAUCA	WHITE SPRUCE	6'-7' HGT.	B&B	
5	PLA	PLATANUS X ACERIFOLIA 'BLOODGOOD'	BLOODGOOD LONDON PLANE TREE	2" CAL.	B&B	
6	ACE	ACER X FREEMANII 'SIENNA'	SIENNA GLEN MAPLE	2" CAL.	B&B	
20	AME	AMELANCHIER x GRANDIFLORA 'AUTUMN BRILLIANCE'	AUTUMN BRILLIANCE SERVICEBERRY	6'-7' HGT.	B&B	
4	ARA	ACER RUBRUM 'ARMSTRONG'	ARMSTRONG RED MAPLE	6'-7' HGT.	B&B	
PERENNIALS/ORNAMENTAL GRASSES						
88	MIS	MISCANTHUS SINENSIS 'GRACILLIMUS'	GRACILLIMUS MAIDEN GRASS	1 GAL.	CONT.	

\*NOTE: ANNUALS TO BE PLANTED BY OWNER. NOT IN INITIAL LANDSCAPE COSTS.

GENERAL PLANTING NOTES:

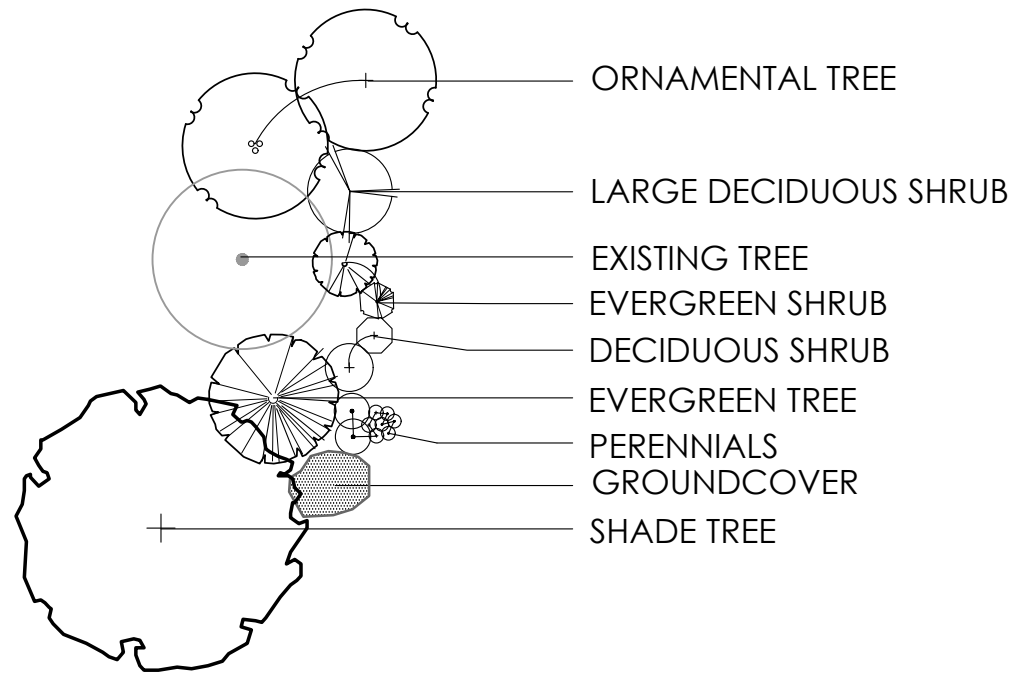
- ALL PLANTS SHALL MEET OR EXCEED STANDARDS SET IN THE USA STANDARD FOR NURSERY STOCK.
- ALL PLANTING OPERATIONS SHALL ADHERE TO THE AMERICAN ASSOCIATION OF NURSERYMEN STANDARDS.
- PLANT LOCATIONS AND BEDS SHALL BE LOCATED BY CONTRACTOR AND APPROVED BY LANDSCAPE ARCHITECT PRIOR TO INSTALLATION.
- PLANTING BEDS SHALL HAVE A MINIMUM 3" DEEP SHREDDED HARDWOOD BARK MULCH. MULCH HEDGES IN A CONTINUOUS BED.
- ALL PLANTING BEDS TO BE TILLED TO A MINIMUM DEPTH OF 12".
- ALL PLANTING BEDS TO BE FERTILIZED WITH 10-10-10 OR APPROVED EQUAL.
- SODDING / SEEDING BY LANDSCAPE CONTRACTOR.
- THE LOCATION OF THE EXISTING UNDERGROUND UTILITIES ARE SHOWN IN AN APPROXIMATE WAY ONLY AND HAVE NOT BEEN INDEPENDENTLY VERIFIED BY THE OWNER OR ITS REPRESENTATIVE. THE CONTRACTOR SHALL DETERMINE THE EXACT LOCATION OF ALL EXISTING UTILITIES PRIOR TO COMMENCING WORK AND AGREES TO BE FULLY RESPONSIBLE FOR ANY AND ALL DAMAGES WHICH MIGHT BE OCCASIONED BY THE CONTRACTOR'S FAILURE TO EXACTLY LOCATE AND PRESERVE ANY AND ALL UNDERGROUND UTILITIES.
- ALL AREAS DISTURBED BY CONSTRUCTION ARE TO BE RESTORED, FINE GRADED AND SEEDED/ SODDED.
- ALL EXISTING PLANT MATERIAL SHOWN ON THIS PLAN IS TO BE PRESERVED UNLESS SPECIFICALLY NOTED OTHERWISE.

CONSTRUCTION NOTES:

- LANDSCAPE AREA, PROVIDE POSITIVE DRAINAGE ACROSS ALL SURFACES.
- LANDSCAPE AREA, PROVIDE POSITIVE DRAINAGE ACROSS ALL SURFACES.

PLANT KEY TYPICALS

SEE PLANT LIST FOR SPECIFIC PLANT SPECIES



REVISIONS

LANDSCAPE PLAN

HORSE POWER FARM  
PREPARED FOR  
AUTO ASSETS  
355 W. OLENTANGY ST.  
POWELL, OH 43065

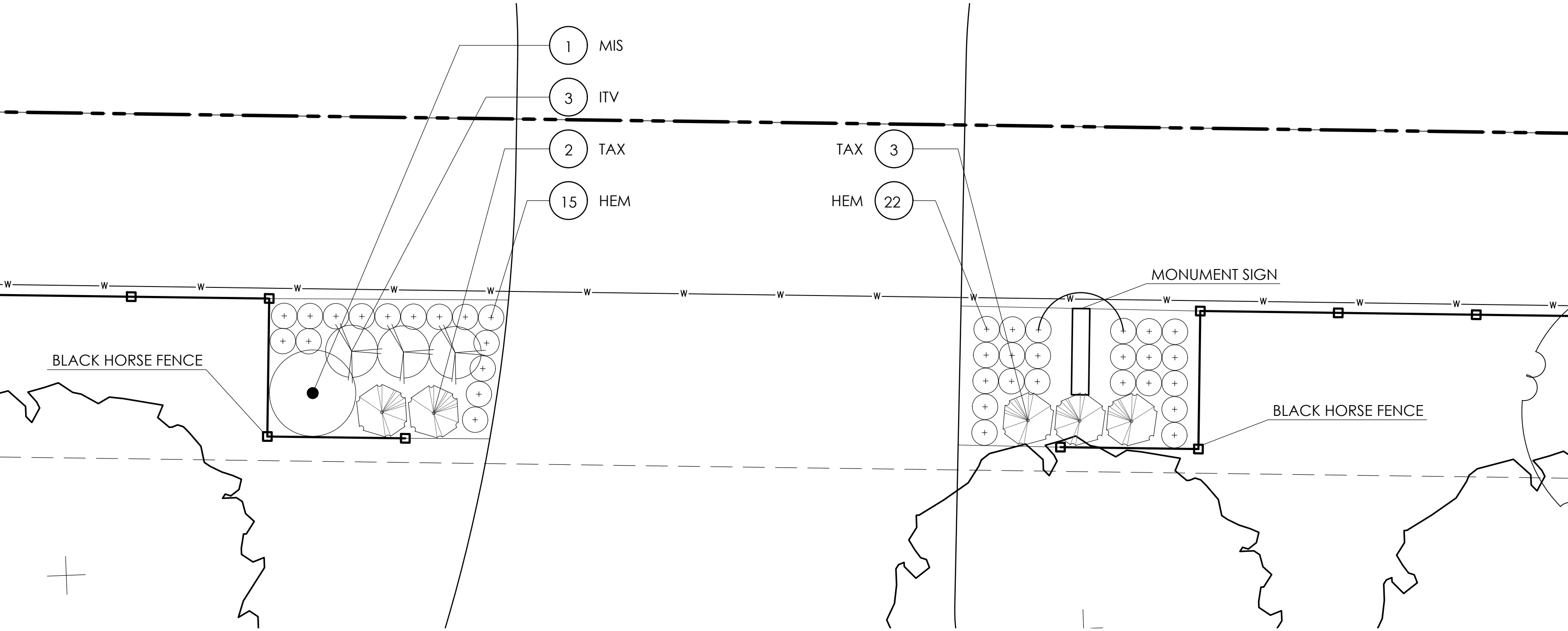
Faris Planning & Design  
LAND PLANNING  
2425 N. 5th Street  
P. (614) 487-1964  
LANDSCAPE ARCHITECTURE  
Suite 401  
Columbus, OH 43215  
www.farisplanninganddesign.com

DATE6/25/18

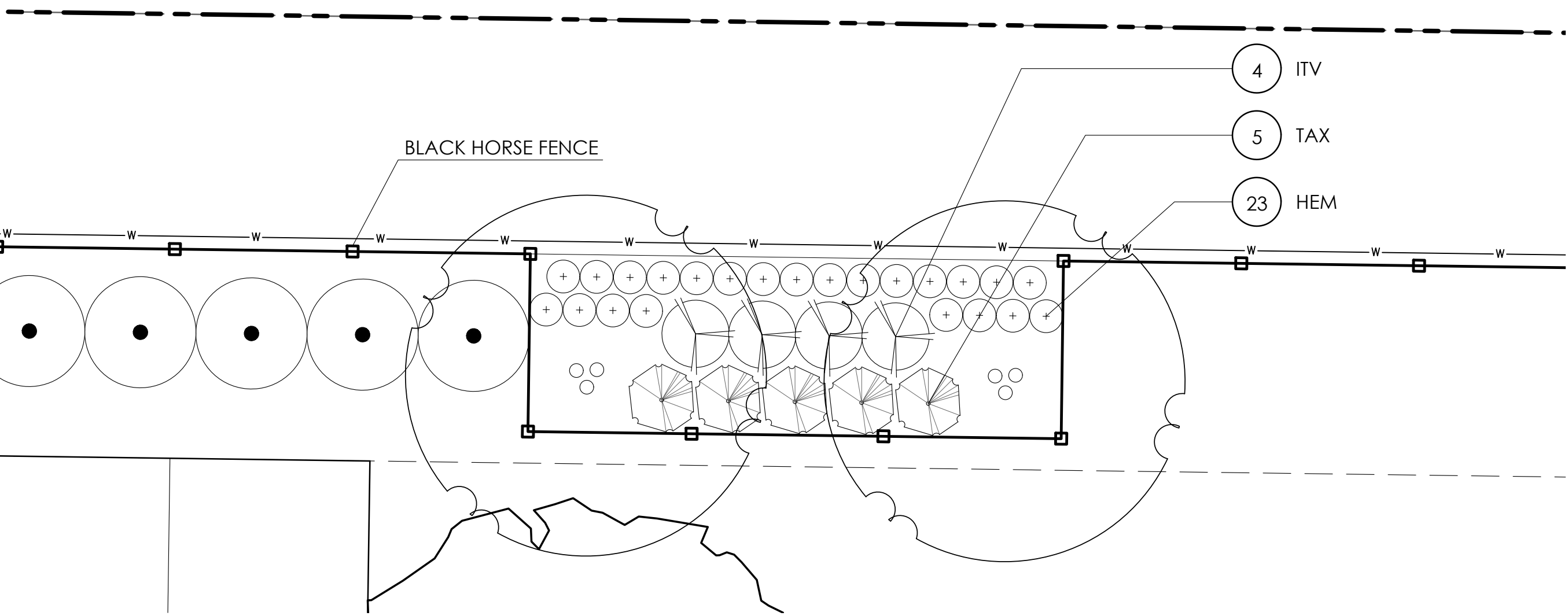
PROJECT17142

SHEET

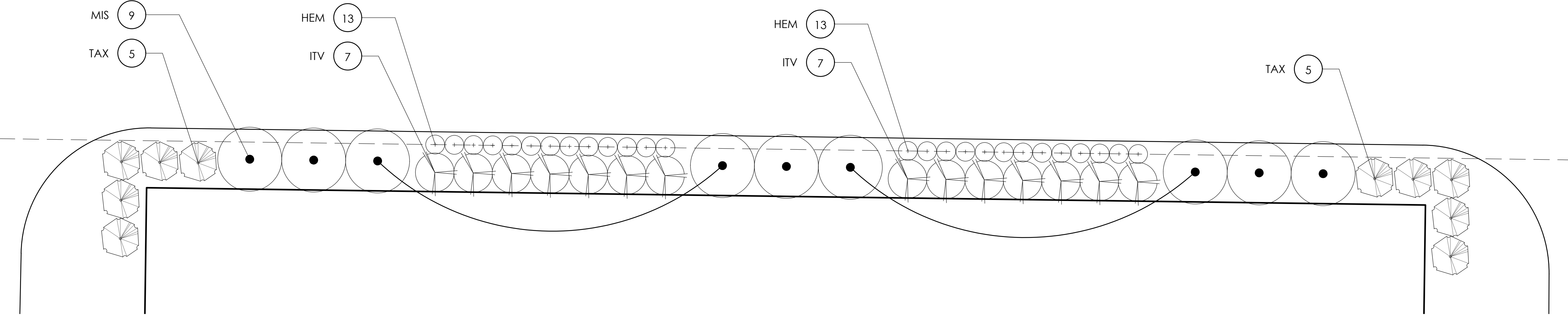
L-2



1 ENTRY ENLARGEMENT PLAN  
SCALE: 1"=5'



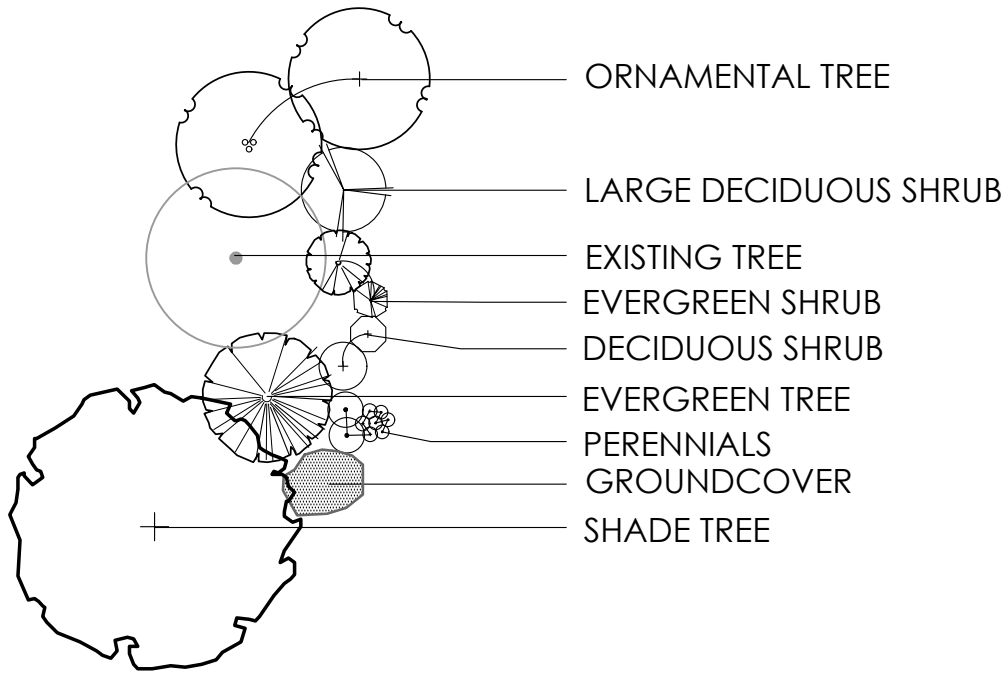
2 FENCING PLANTING PLAN (TYPICAL OF 4)  
SCALE: 1"=5'



3 ENLARGEMENT PLAN  
SCALE: 1"=5'

### PLANT KEY TYPICALS

SEE PLANT LIST FOR SPECIFIC PLANT SPECIES



### GENERAL PLANTING NOTES:

1. ALL PLANTS SHALL MEET OR EXCEED STANDARDS SET IN THE USA STANDARD FOR NURSERY STOCK.
2. ALL PLANTING OPERATIONS SHALL ADHERE TO THE AMERICAN ASSOCIATION OF NURSERYMEN STANDARDS.
3. PLANT LOCATIONS AND BEDS SHALL BE LOCATED BY CONTRACTOR AND APPROVED BY LANDSCAPE ARCHITECT PRIOR TO INSTALLATION.
4. PLANTING BEDS SHALL HAVE A MINIMUM 3" DEEP SHREDDED HARDWOOD BARK MULCH. MULCH HEDGES IN A CONTINUOUS BED.
5. ALL PLANTING BEDS TO BE TILLED TO A MINIMUM DEPTH OF 12".
6. ALL PLANTING BEDS TO BE FERTILIZED WITH 10-10-10 OR APPROVED EQUAL.
7. SODDING / SEEDING BY LANDSCAPE CONTRACTOR.
8. THE LOCATION OF THE EXISTING UNDERGROUND UTILITIES ARE SHOWN IN AN APPROXIMATE WAY ONLY AND HAVE NOT BEEN INDEPENDENTLY VERIFIED BY THE OWNER OR ITS REPRESENTATIVE. THE CONTRACTOR SHALL DETERMINE THE EXACT LOCATION OF ALL EXISTING UTILITIES PRIOR TO COMMENCING WORK AND AGREES TO BE FULLY RESPONSIBLE FOR ANY AND ALL DAMAGES WHICH MIGHT BE OCCASIONED BY THE CONTRACTOR'S FAILURE TO EXACTLY LOCATE AND PRESERVE ANY AND ALL UNDERGROUND UTILITIES.
9. ALL AREAS DISTURBED BY CONSTRUCTION ARE TO BE RESTORED, FINE GRADED AND SEEDED/ SODDED.
10. ALL EXISTING PLANT MATERIAL SHOWN ON THIS PLAN IS TO BE PRESERVED UNLESS SPECIFICALLY NOTED OTHERWISE.

### CONSTRUCTION NOTES:

1. LAWN AREA, PROVIDE POSITIVE DRAINAGE ACROSS ALL SURFACES.
2. LANDSCAPE AREA, PROVIDE POSITIVE DRAINAGE ACROSS ALL SURFACES.

### PLANT LIST

(CONTRACTOR RESPONSIBLE FOR ALL PLANTS SHOWN ON PLAN)

QTY	KEY	BOTANICAL NAME	COMMON NAME	SIZE	COND.	REMARKS
SHRUBS						
35	TAX	TAXUS X MEDIA 'DENSIFORMIS'	DENSE SPREADING YEW	24" HGT.	CONT.	
33	ITV	ITEA VIRGINICA 'HENRY'S GARNET'	HENRY'S GARNET SWEETSPIRE	18" HGT.	CONT.	
PERENNIALS/ORNAMENTAL GRASSES						
10	MIS	MISCANTHUS SINENSIS 'GRACILLIMUS'	GRACILLIMUS MAIDEN GRASS	1 GAL.	CONT.	
155	HEM	HEMEROCALLIS 'STELLA D'ORO'	STELLA D'ORO DAYLILY	1 GAL.	CONT.	

\*NOTE: ANNUALS TO BE PLANTED BY OWNER. NOT IN INITIAL LANDSCAPE COSTS.

REVISIONS

LANDSCAPE ENLARGEMENT PLAN

HORSE POWER FARM  
PREPARED FOR  
AUTO ASSETS  
355 W. OLENTANGY ST.  
POWELL, OH 43065

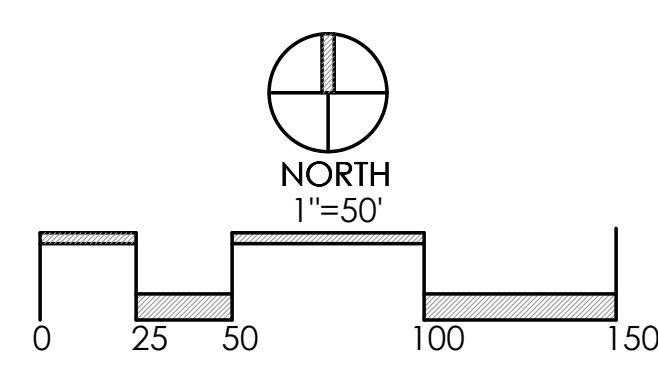
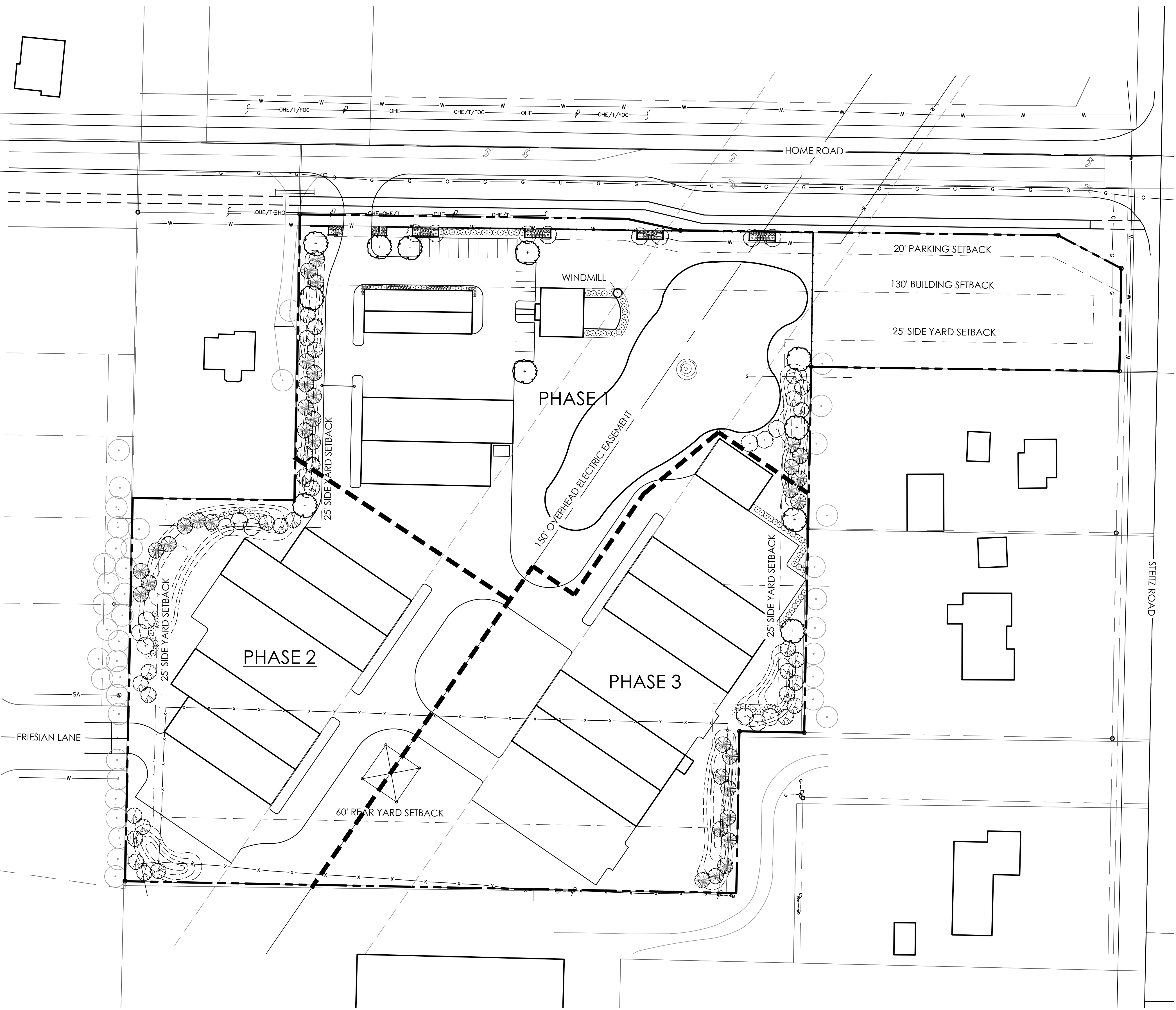
Faris Planning & Design  
LAND PLANNING  
2425 N. 5th Street  
P. (614) 487-1964  
LANDSCAPE ARCHITECTURE  
Suite 401  
Columbus, OH 43215  
www.farispplanninganddesign.com

DATE6/25/18

PROJECT17142

SHEET

L-3



REVISIONS	

PHASING PLAN

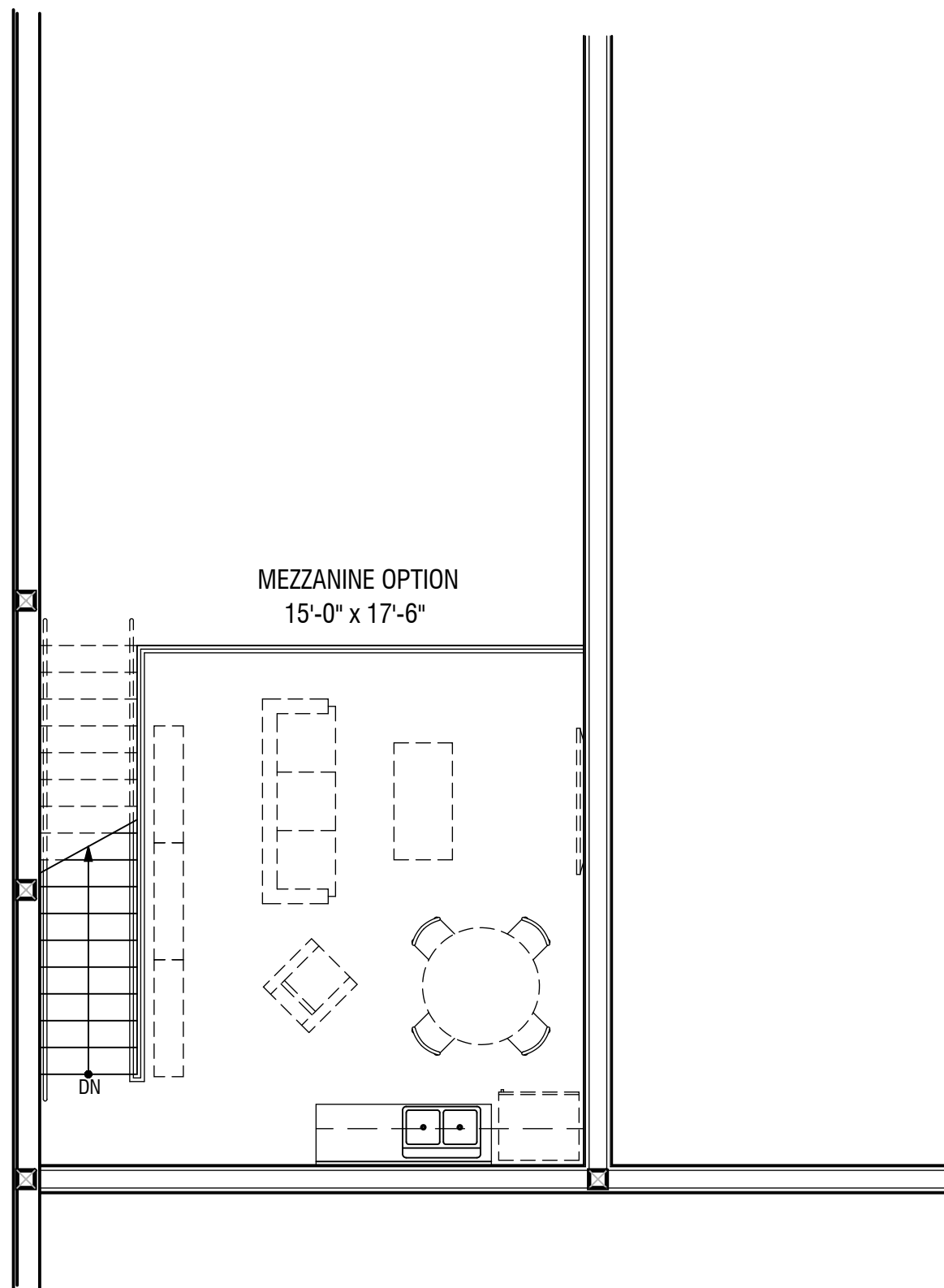
HORSE POWER FARM  
PREPARED FOR  
AUTO ASSETS  
355 W. OLENTANGY ST.  
POWELL OH 43065

**Faris Planning & Design**

LAND PLANNING  
2425 N. 5th Street  
P. (614) 487-1964

LANDSCAPE ARCHITECTURE  
Suite 401  
Columbus, OH 43215  
www.farisplanninganddesign.com

DATE	6/25/18
PROJECT	17142
SHEET	



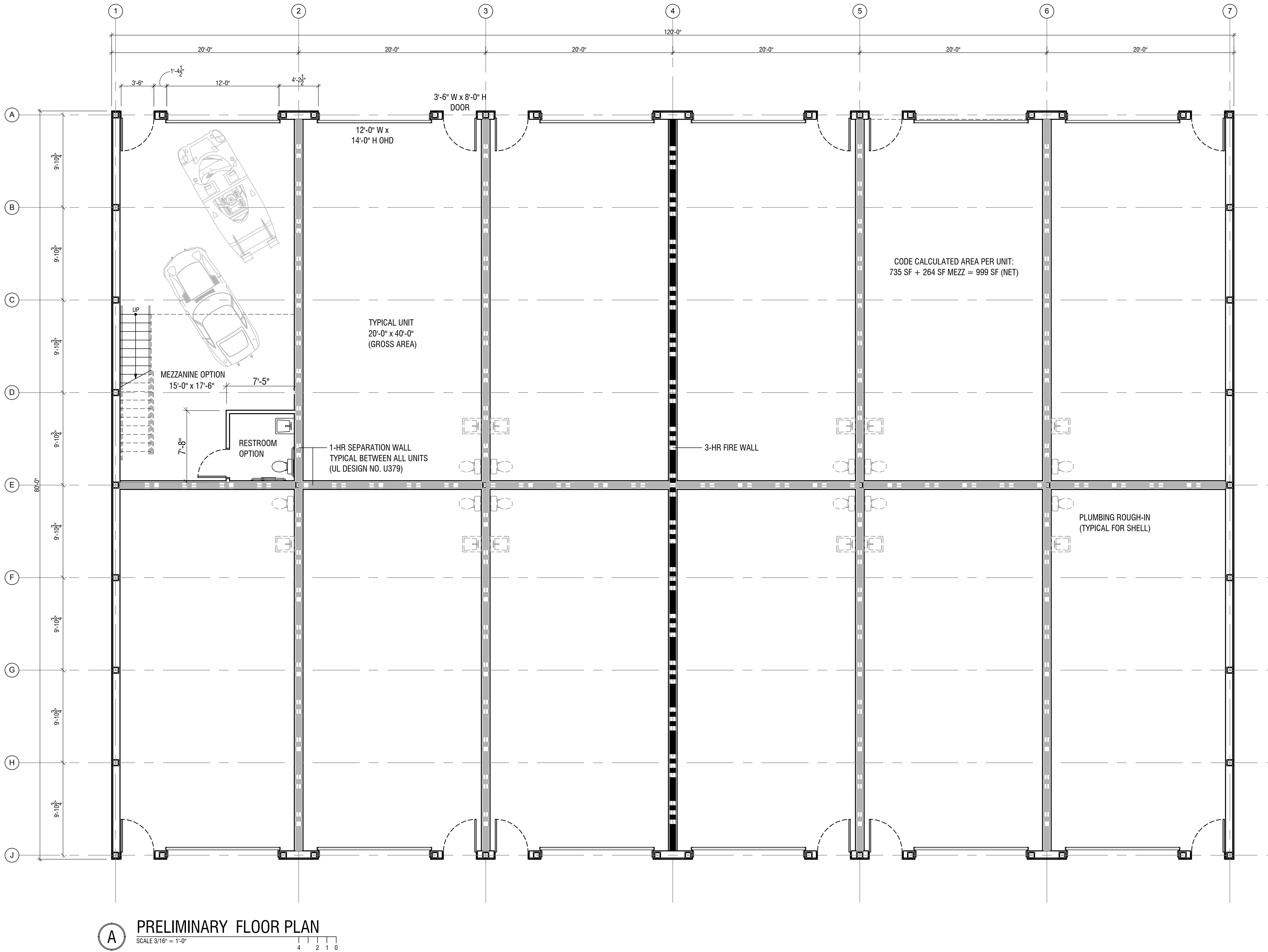
**B** PRELIMINARY MEZZ PLAN  
SCALE 3/16" = 1'-0"

**PRELIMINARY BUILDING CODE ANALYSIS**  
**CONSTRUCTION TYPE VB (WOOD FRAME)**  
**USE GROUP: U (PRIVATE GARAGE)**  
**MAXIMUM AREA: 5,500 SF (NS)**

**AREA FRONTAGE INCREASE (OBC 506.3):**  
 $A_a = [A_t + (NS \times I_f)]$   
 $A_a = [5,500 + (5,500 \times .49)]$

**$A_a = 8,195$  SF**

$I_f = [F/P - 0.25] W/30$   
 $I_f = \frac{260}{1440} - 0.25 \frac{26}{30}$   
 **$I_f = 0.49$**

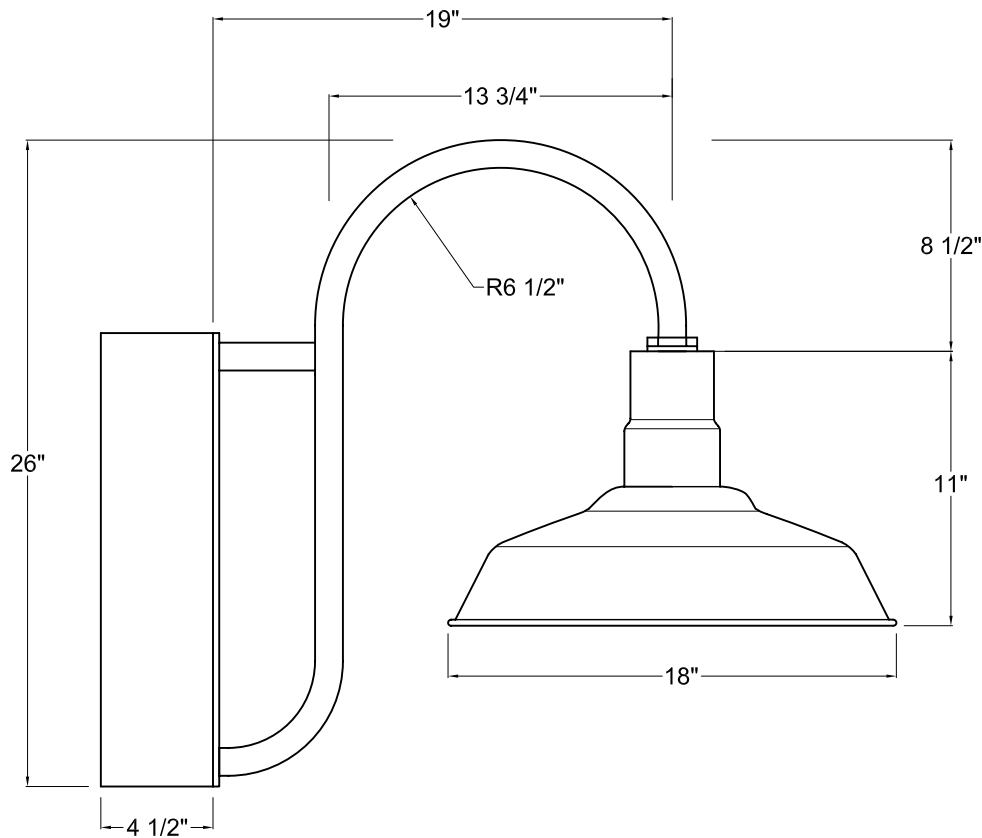




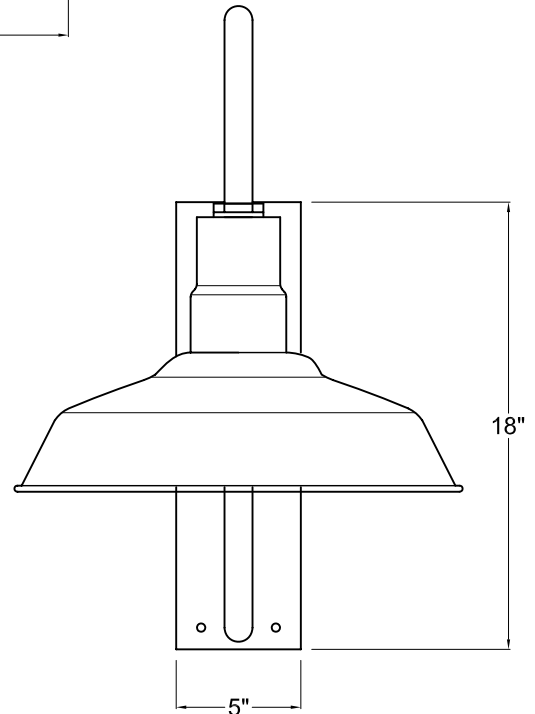
# HI-LITE MFG. CO., INC.

13450 Monte Vista Avenue  
Chino, California 91710  
Telephone: (909) 465-1999  
Toll Free: (800) 465-0211  
Fax: (909) 465-0907  
www.hilitemfg.com

JOB NAME:		
SCALE: N.T.S.	DATE: 07/08/2014	TYPE:
DRAWN BY: S.M.	QTY:	
SHEET:		REV:



SIDE VIEW



FRONT VIEW

Item Number	Wattage	Voltage
H-15118-119/B-4-BBB4-119/38/LED2/35/F/BCM-M	38W	120/277V

## Finish

119-Bronze (Shade, Arm & Ballast Box)

## Mounting

Wall Mount

## Lamp/Socket

38W LED2 4000 Lumens, 3500k  
82° Beam Angle Flat Lens

\*\*\*Confidential and Proprietary. The Information contained on this page is the sole property of HI-Lite Mfg. Co., Inc. Any reproduction, redistribution, or use to profit from in part or as a whole without prior written authorization of HI-Lite Mfg. Co., Inc. is unlawful, against trade laws and will be prosecuted to the fullest extent.

# TRAVERSE SERIES

SURFACE/CEILING/GARAGE

Cat.#

Job

Type



**BEACON**  
design · performance · technology

Approvals

## SPECIFICATIONS

### Intended Use:

The Traverse luminaire is a wall surface mounted luminaire with a field replaceable LED light engine & optical bezel system. Internal components are totally enclosed in rain-tight and corrosion-resistant die cast aluminum housing. The TRV Luminaire is suitable for wet locations.

### Construction:

- Traverse luminaire consists of a die cast aluminum two-piece housing.
- Die cast main (thermal) housing provides direct heat exchange between the LED light engine and the cool outdoor air by drawing heat through integral heat channels and out to the sculptured and functional luminaire surface.
- LED drivers are thermally isolated from the main housing, mechanically attached and heat sunk to the rear housing.
- Main housing is designed with heat dissipating fins for LED thermal management without the use of metallic screens, cages, or fans.
- Shape of the main housing is designed to prevent debris accumulation and as a bird nesting deterrent. The back and main housings are designed to hinge open for easy mounting and easy access.

### LED/Optics:

- Optical one piece cartridge system consisting of an LED engine, LED lamps, optics, gasket and stainless steel bezel.
- Cartridge is held together with internal brass standoffs soldered to the board so that it can be field replaced as a one piece optical system.
- A two-piece die cut silicone and polycarbonate foam gasket ensures a weather-proof seal around each individual LED and allows the Traverse luminaire to be rated for high-pressure hose down applications.
- Optical cartridge is secured to the extruded housing with fasteners and a heat pad to ensure thermal conductivity.
- Optics are held in place without the use of adhesives and the complete assembly is gasketed for high pressure hose down cleaning.
- Cartridge assembly is available in various lighting distributions using TIR designed acrylic optical lenses over each LED.

### Electrical:

- 100V through 277V, 50 Hz to 60 Hz (UNV).
- Power factor is min 0.92 at full load.
- All electrical components are rated at 50,000 hours at full load and 40°C ambient conditions per MIL-217F Notice 2.
- Optional 0 to 10 volt dimming drivers are available upon request.
- Component-to-component wiring within the luminaire may carry no more than 80% of rated load and is listed by UL for use at 600VAC at 50°C or higher.
- Plug disconnects are listed by UL for use at 600 VAC, 15A or higher. 15A rating applies to primary (AC) side only.
- Surge protection - 20KA

### Controls/Options:

- Traverse is available with an optional passive infrared (PIR) motion sensor capable of detecting motion 360° around the luminaire. When no motion is detected for the specified time, the Motion Response system reduces the wattage down to a factory preset level, reducing light level accordingly. When motion is detected, the luminaire returns to full wattage and full light output. Please contact Beacon Products if project requirements vary from the standard configurations
- Available with Energeni for optional set dimming with simple delay, or timed dimming based on time of night (see Energeni product page for more details [www.beaconproducts.com/products/energeni](http://www.beaconproducts.com/products/energeni))
- In addition, Traverse can be specified with **SiteSync™** wireless control system for reduction in energy and maintenance cost while optimizing light quality 24/7. See ordering information or visit: [www.hubbelllighting.com/sitesync/](http://www.hubbelllighting.com/sitesync/) for more details

### Installation:

- Rear housing (back plate) is designed with various bolt patterns for direct wall mounting or mounting to a recessed 4" junction box.
- Rear housing has three integral 3/4" NPT power feed locations (bottom and each side) for surface mounted conduit applications.
- After mounting the rear housing to the wall or junction box, the main housing is designed to hang and hinge closed after connecting the male and female quick connectors.
- Mounting design permits a simple retrofit to existing wall luminaires that utilize surface mount or recessed junction boxes.

### Finish:

- IFS polyester powder-coat electrostatically applied and thermocured.
- IFS finish consists of a five stage iron phosphate chemical pretreatment regimen with a polymer primer sealer, oven dry off, and top coated with a thermoset super TGIC polyester powder coat finish.
- The finish meets the AAMA 605.2 performance specification which includes passing a 3000 hour salt spray test for corrosion resistance and resists cracking or loss of adhesion per ASTM D522 and resists surface impacts of up to 160 inch-pounds.

### Listings:

- The luminaire shall bear a CSA label and be marked suitable for wet locations (standard).
- This product is approved by the Florida Fish and Wildlife Conservation Commission. Separate spec available at: <http://www.beaconproducts.com/products/traverse>

### Warranty:

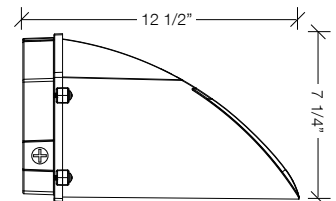
Five year limited warranty for more information visit: [www.hubbelllighting.com/resources/warranty](http://www.hubbelllighting.com/resources/warranty)

## PRODUCT IMAGE(S)

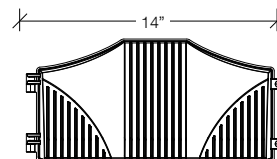


Shown with SiteSync™

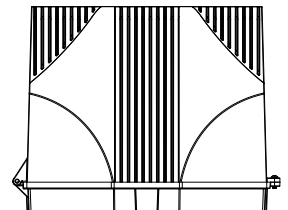
## DIMENSIONS



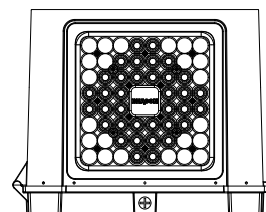
Side View



Front View



Top View



Bottom View

## CERTIFICATIONS/LISTINGS



\*3000K and warmer CCTs only



Beacon Products • 2041 58th Avenue Circle East Bradenton, FL 34203 • Phone: 800-345-4928

Due to our continued efforts to improve our products, product specifications are subject to change without notice.

© 2016 BEACON PRODUCTS, All Rights Reserved • For more information visit our website: [www.beaconproducts.com](http://www.beaconproducts.com) • Printed in USA TRV-SPEC 11/16



**HUBBELL**  
Lighting