

Steve Hodge, Exec.
Director will
address City Council
for 2-3 minutes Tues. evening

Levy Fact Sheet



Mental health and substance abuse issues impact everyone – families, businesses, schools, and the community. These are real issues for many people within our cities, villages and townships.

Delaware-Morrow Mental Health & Recovery Services Board assures the availability of a safety net of mental health and substance abuse treatment and prevention services for our community members. The Board continuously plans, funds, monitors, and evaluates these services.

The following providers are a part of our network of care:

- Safe Harbor Peer Support Services/ Annie's Outreach Center/ No Limits Outreach Center
- Southeast Healthcare Services/Center of Vocational Alternatives (COVA)
- HelpLine
- Turning Point
- Recovery & Prevention Resources of Delaware and Morrow Counties
- Del-Mor Dwellings Corporation
- Maryhaven
- Central Ohio Mental Health Center

Currently, the Board has a 1.0 mill property tax levy, which will expire in December, 2017. The Board has been operating with a 1.0 mill levy since 1986.

This 1.0 mill renewal levy will cost \$29.14 annually per \$100,000 of home valuation.

This is a **renewal** of the existing levy – NOT an increase.

Ninety-one cents of every dollar is used to provide direct services.

The Board and its agencies are constantly looking for ways to increase efficiencies and leverage these dollars to meet the increasing needs for mental health and alcohol/drug treatment and prevention services for an expanding population.

Through our providers of care, the Board funds prevention and treatment services that:

- Help to preserve families: keeping productive / employed members of our community
- Meets the needs for care and services to our children, our families, our schools and the community:
 - Suicide prevention
 - Crisis response
 - Drug and alcohol prevention programs
 - Fight heroin/pain pill epidemic
 - Counseling services
 - Anti-bullying and other violence prevention
- Provides safe shelter in domestic violence situations

www.supportmentalhealthandrecovery.com

Network Providers of Care

The Board provides the community safety net and manages a full continuum of mental health and alcohol/drug prevention and treatment services designed to address the needs of persons in Delaware and Morrow Counties.

Center of Vocational Alternatives (COVA)

Vocational and Rehabilitation Services
www.cova.org

27 West Winter Street, Delaware, OH 43015
(877) 521-2682 toll free

Central Ohio Mental Health Center (COMHC)

Comprehensive Mental Health Treatment & Support Services for Children, Adolescents, & Adults
www.comhc.net

250 South Henry Street, Delaware, OH 43015
(740) 369-7688 OR (740) 369-4482

75 Clairedan Drive, Powell, OH 43065
(614) 396-5665

950 Meadow Drive, Suite A, Mt. Gilead, OH 43338
(419) 947-4560

Del-Mor Dwellings Corporation

Affordable Housing for Persons with Disabilities
www.delmordwellings.org

30 North Franklin Street, Delaware, OH 43015
(740) 363-5562

HelpLine

24-hour Crisis Hotline, Information, Referral, & Prevention Services
www.helplinedelmor.org

11 North Franklin Street, Delaware, OH 43015
Dial 2-1-1 or (740) 369-3316 or (800) 684-2324

950 Meadow Drive, Suite B, Mt. Gilead, OH 43338
(419) 947-2520

Maryhaven

Mental Health Treatment, Alcohol & Other Drug Education, Prevention, and Treatment Services for Adolescents and Adults
www.maryhaven.com

88 North Sandusky Street, Delaware, OH 43015
(740) 203-3800

245 Neal Avenue, Mt. Gilead, OH 43338
(419) 946-6734

Recovery & Prevention Resources (RPR)

Alcohol & Other Drug Education, Prevention, & Treatment Services for Adolescents & Adults
www.rprdm.org

118 Stover Drive, Delaware, OH 43015
(740) 369-6811

950 Meadow Drive, Suite C, Mt. Gilead, OH 43338
(419) 947-4055

Safe Harbor Peer Support Services

Consumer Operated & Peer Support Services
www.shpss.org

Annie's Outreach Center
325 South Sandusky Street, Delaware, OH 43015
(740) 363-1619

No Limits Outreach Center
4046 Township Road 246, Edison, OH 43320
(419) 946-5900

Turning Point

Shelter and Support Services for Victims of Domestic Abuse and Violence
www.turningpoint6.com
(740) 382-8988
(800) 232-6505

Behavioral Health For Our Community

Delaware-Morrow Mental Health & Recovery Services Board

40 North Sandusky Street, Suite 301
Delaware, Ohio 43015
(740) 368-1740

www.dmmhrs.org

Why Does it Matter?

One in four adults experience a diagnosable mental illness in a given year. One in 17 live with a serious mental illness such as schizophrenia, major depression, or bipolar disorder.

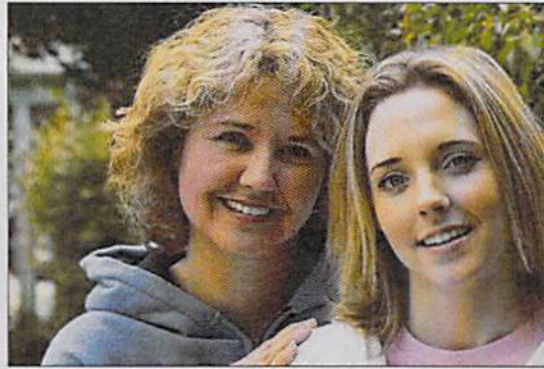
About 20% of youth ages 13-18 experience severe mental disorders in a given year.

Approximately 10% of Ohioans will have substance abuse or addiction problems within any given year.

Each day four Ohioans die from an unintentional drug/medication overdose. Annually this amounts to more deaths than vehicular accidents.

Suicide is the tenth leading cause of death in the U.S. and is more common than homicide. Suicide is the third leading cause of death for ages 15-24.

Half of all chronic mental illness begins by the age of 14; three-quarters by age 24.



Services

DMMHRSB seeks to help individuals to lead positive and healthy lives through the services and programs that are funded, such as:

Prevention and early intervention in the schools and community.

Mental health and addiction treatment to help individuals in times of need.

Recovery supports for adults and children with serious mental illness to help them to live and thrive in their home community.

Other support services for the community such as 24-hour crisis intervention, 24-hour crisis hotline, and domestic violence shelter/advocacy.

What is the Delaware Morrow Mental Health & Recovery Services Board?

The Delaware-Morrow Mental Health and Recovery Services Board (DMMHRSB) provides funding for treatment, early intervention and prevention services to help nearly 20,000 residents with mental health and/or addiction disorders every year.

DMMHRSB is governed by a local volunteer Board whose members live in Delaware and Morrow Counties. The Board is comprised of community leaders, professionals in the mental health, alcohol and drug addiction field, consumers and individuals interested in helping people and the community.

DMMHRSB is the public authority with the responsibility to:

Create and maintain a local system of care that provides a full continuum of alcohol/drug addiction and mental health services to Delaware and Morrow County residents.

Determine the types of services, programs, and facilities that are needed based on local assessment and community input.

Contract with public and private agencies for the provision of services.

Review, evaluate, and audit the delivery of services.

Recruit and promote local financial support for services.

Administer federal, state and local funds.

Coordinate and collaborate with other community organizations.

Advocate for individuals with mental illness and/or addiction.

Provide community education.