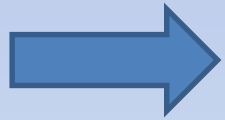


City of Powell Annual Street Maintenance & Repair Program 2016



Street M&R Program

Main considerations in determining the program:



Pavement Condition
Rating (PCR)

Budgetary
considerations

Street priority
(hierarchy) – Local?
Local Collector?
Collector? Arterial?

The “Big Picture”
and what makes
sense

PAVEMENT CONDITION RATING SYSTEM



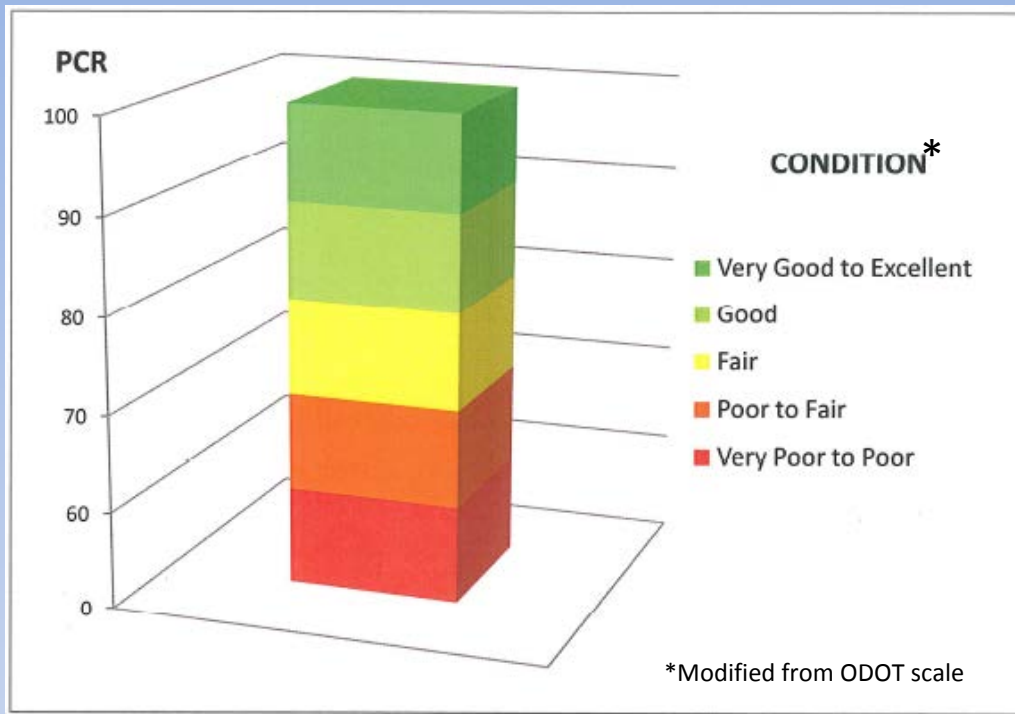
Prepared by

The Ohio Department of Transportation
Office of Pavement Engineering
1980 West Broad Street
Columbus, OH 43223

April 2006

There are many rating systems available, however; the City has adopted a modified ODOT *"Pavement Condition Rating System"*.

The ODOT PCR System is a "snapshot in time" ... it is not a forecaster.



City staff has adopted the scale:

90-100	= Very Good to Excellent
80-90	= Good
70-80	= Fair
60-70	= Poor to Fair
0-60	= Very Poor to Poor

What does a street *look* like with a certain PCR?



90.00 (Very Good to Excellent)

What does a street *look* like with a certain PCR?



85.00 (Good)

What does a street *look* like with a certain PCR?



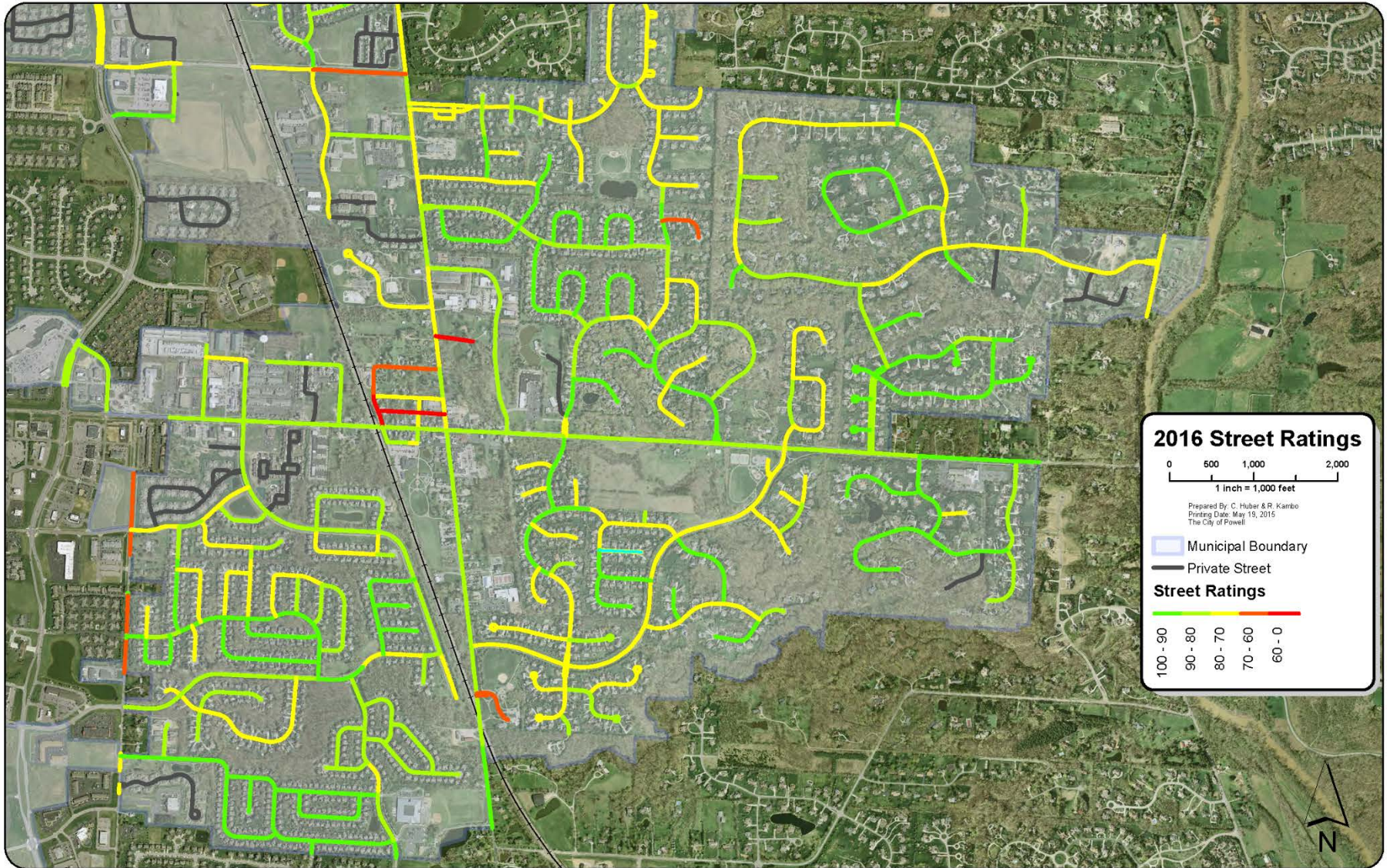
80.00 (Good)

What does a street *look* like with a certain PCR?

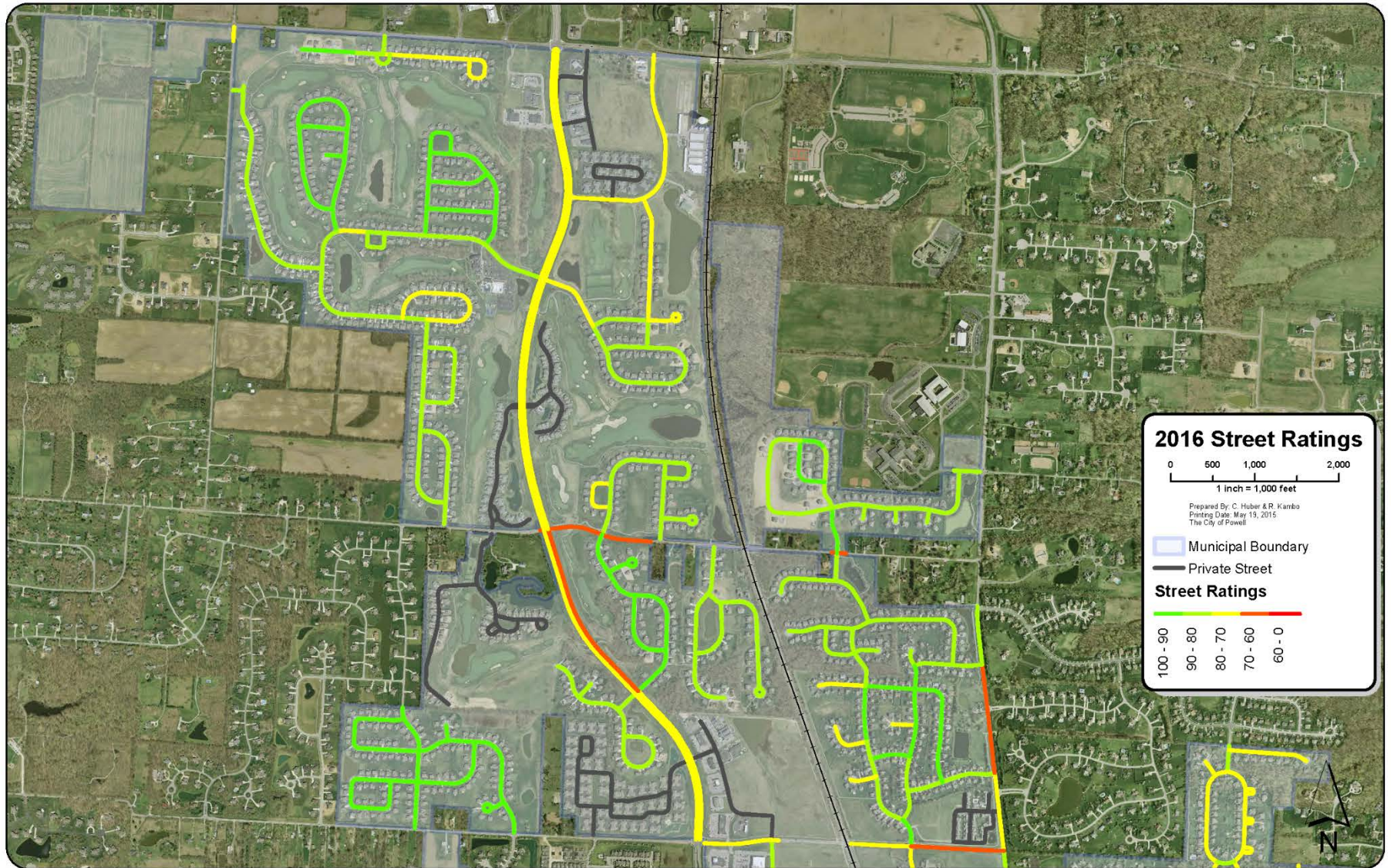


71.35 (Fair)

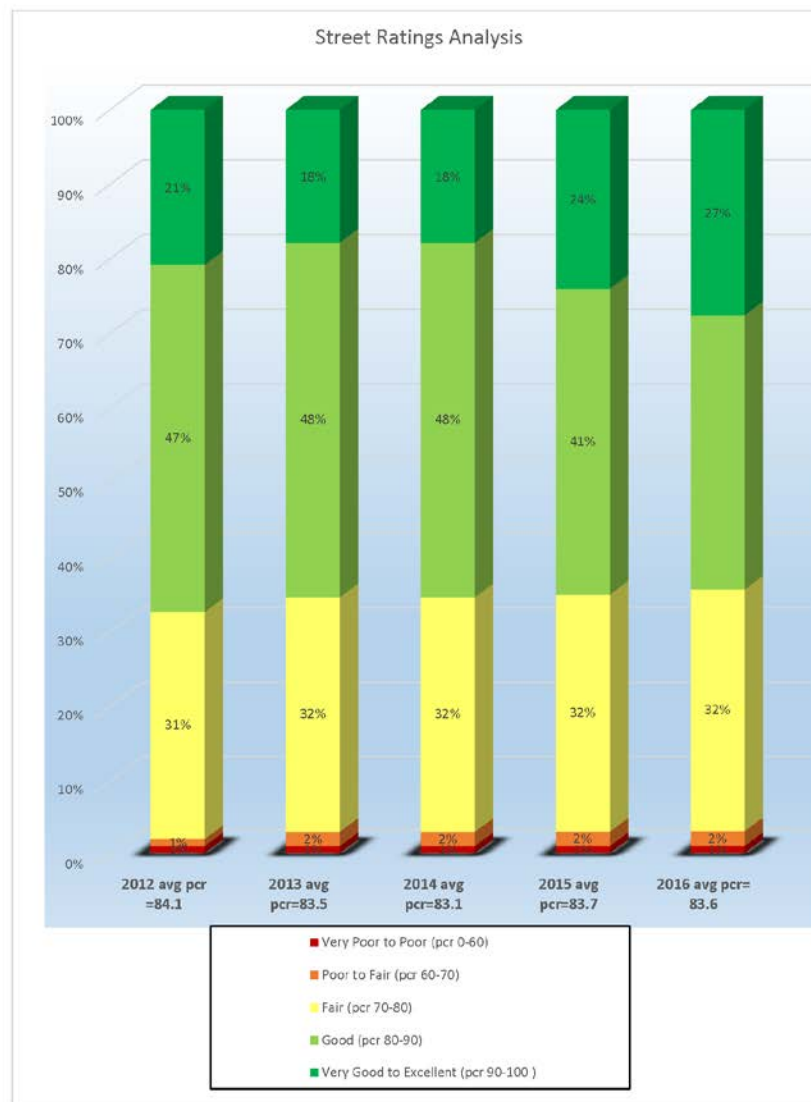
How did our streets rate this year?



How did our streets rate this year?



Summary of street ratings



Street M&R Program

Types of Maintenance & Repairs

- Mill, SAMI & Overlay (Streets)
- Intersection Reconstruction (ADA ramps/curbs/walks)
- Curb & Gutter Replacement
- Storm Structure Repair
- Crack Seal
- Surry Seal
- Pavement marking

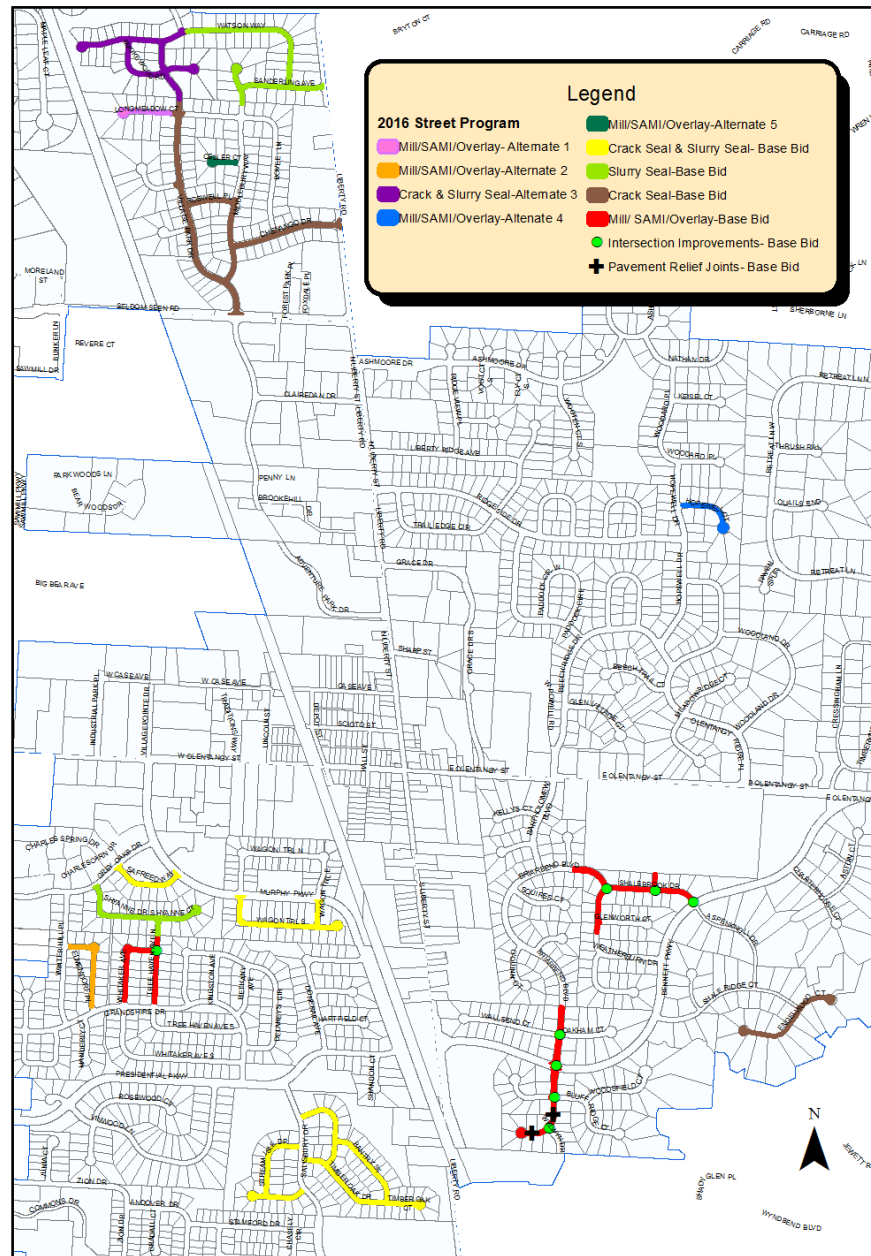


Exhibit A-1

1 inch = 800 feet

2016 Street Maintenance & Repair Program

Work locations as shown on this exhibit are approximate, exact work limits and locations shall be marked and located in field in coordination with City Engineer, prior to construction.

Proposed Street M&R Program

Engineer's Construction Cost Estimate

BASE CONTRACT:

Mill/SAMI/Overlay & Curb Replacement (<i>Streets</i>).....	\$ 276,263
Curb And Gutter Replacement.....	\$ 81,491
Intersection Reconstruction (<i>ADA Ramps/Walks/Pathways/Curbs</i>).....	\$ 99,395
Crack Seal (<i>Streets</i>).....	\$ 21,902
Storm Sewer Structures.....	\$ 23,400
Slurry Seal.....	\$ 72,727
Pavement Marking	\$ 7,753
Traffic Maintenance.....	\$ 18,000
Sub-Total.....	\$ 600,931
Contingency (10%).....	\$ 60,093.10
TOTAL.....	\$ 661,024.10

ALTERNATES (includes 10% contingency):

Alternates:

Alt. 1 - Longmeadow Ct.- Mill/SAMI/Overlay (Powell Place) Alt. 2-	\$ 39,797
Alt. 2 - Elmendorf Pl.- Mill/SAMI/Overlay (<i>Grandshire</i>)	\$ 54,981
Alt. 3 - Crack Seal & Slurry Seal (Woods of Powell South).....	\$ 43,661
Alt. 4 - Hopewell Ct. - Mill/SAMI/Overlay (<i>Olentangy Ridge</i>).....	\$ 38,804
Alt. 5 - Celler Ct. - Mill/SAMI/Overlay (<i>Powell Place</i>).....	\$ 20,763

* = 2016 Budgeted amount is up to \$678,000 (amount does not include roadway improvements on Sawmill Rd. or Liberty Rd. north of Seldom Seen Rd.)



Anticipated Schedule

**Advertise &
Bid – Early
June**

**Award
Contract –
Late June**

**Begin
Construction
– July**

**Complete
Construction
– October**