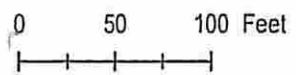
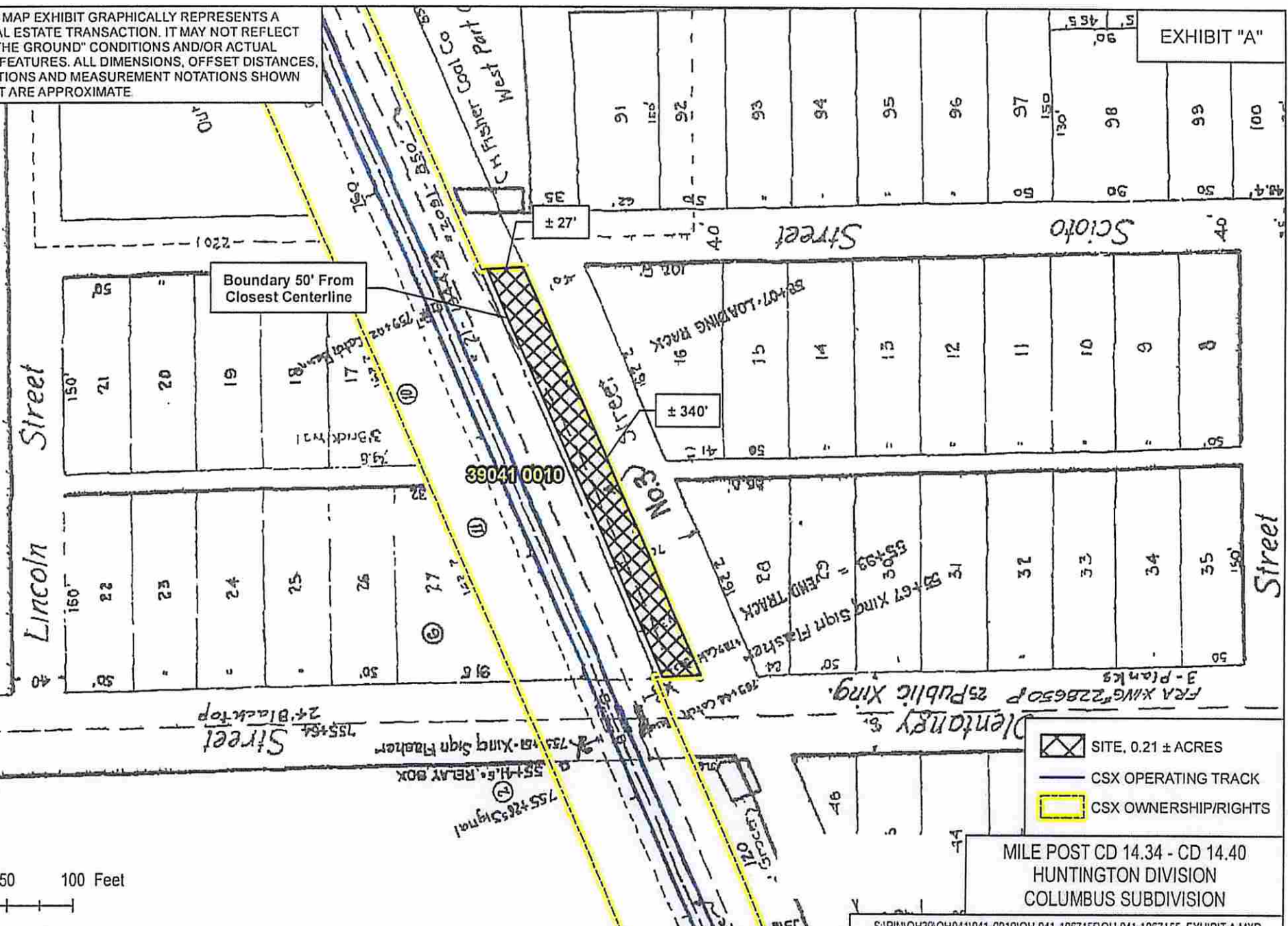


EXHIBIT "A"

THIS RAILROAD MAP EXHIBIT GRAPHICALLY REPRESENTS A PROPOSED REAL ESTATE TRANSACTION. IT MAY NOT REFLECT CURRENT "ON THE GROUND" CONDITIONS AND/OR ACTUAL LOCATIONS OF FEATURES. ALL DIMENSIONS, OFFSET DISTANCES, AREA CALCULATIONS AND MEASUREMENT NOTATIONS SHOWN ON THIS EXHIBIT ARE APPROXIMATE.

A20'

CITY OF POWELL,  
ORDINANCE 2015-33  
EXHIBIT A

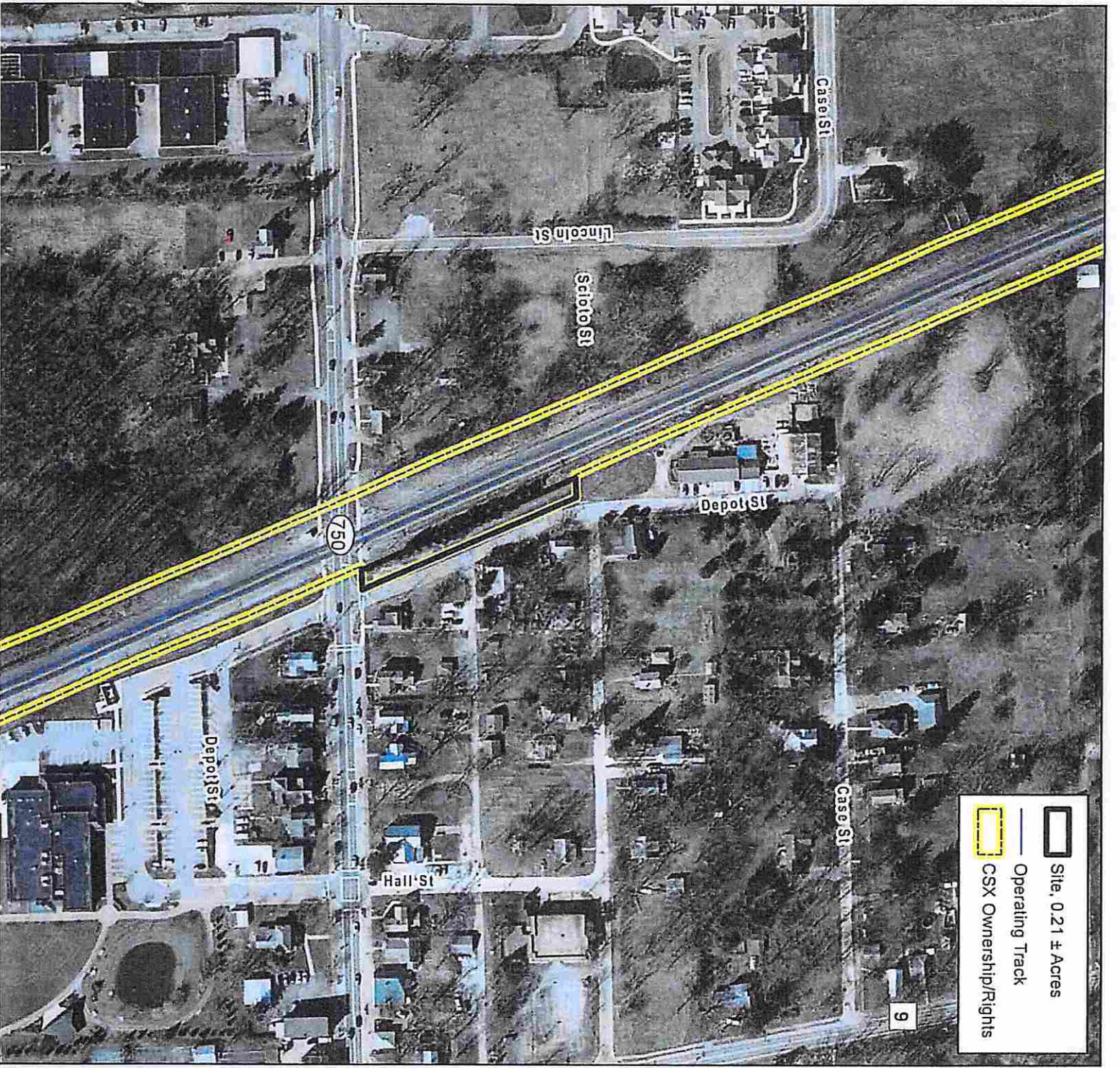


- SITE, 0.21 ± ACRES
- CSX OPERATING TRACK
- CSX OWNERSHIP/RIGHTS

MILE POST CD 14.34 - CD 14.40  
HUNTINGTON DIVISION  
COLUMBUS SUBDIVISION

S:\P\OH39\OH0411041-0010\OH-041-1067155\OH-041-1067155\_EXHIBIT-A.MXD

CSX TRANSPORTATION, INC. SITE: OH-041-1067155	STATE:	1" = 100'	DRAWN BY: S5754	INTEL #	GIS #	PIN #:
	CITY: POWELL	COUNTY: DELAWARE		V2HV/14	16284	39041 0010
CITY OF POWELL - PARKING LOT DELAWARE COUNTY - POWELL,	DATE: 3/14/2014	REVISED:				



Site, 0.21 ± Acres

Operating Track

CSX Ownership/Rights

9