

PLANT KEY TYPICALS

SEE PLANT LIST FOR SPECIFIC PLANT SPECIES

ORNAMENTAL TREE

LARGE DECIDUOUS SHRUB

EXISTING TREE

EVERGREEN SHRUB

DECIDUOUS SHRUB

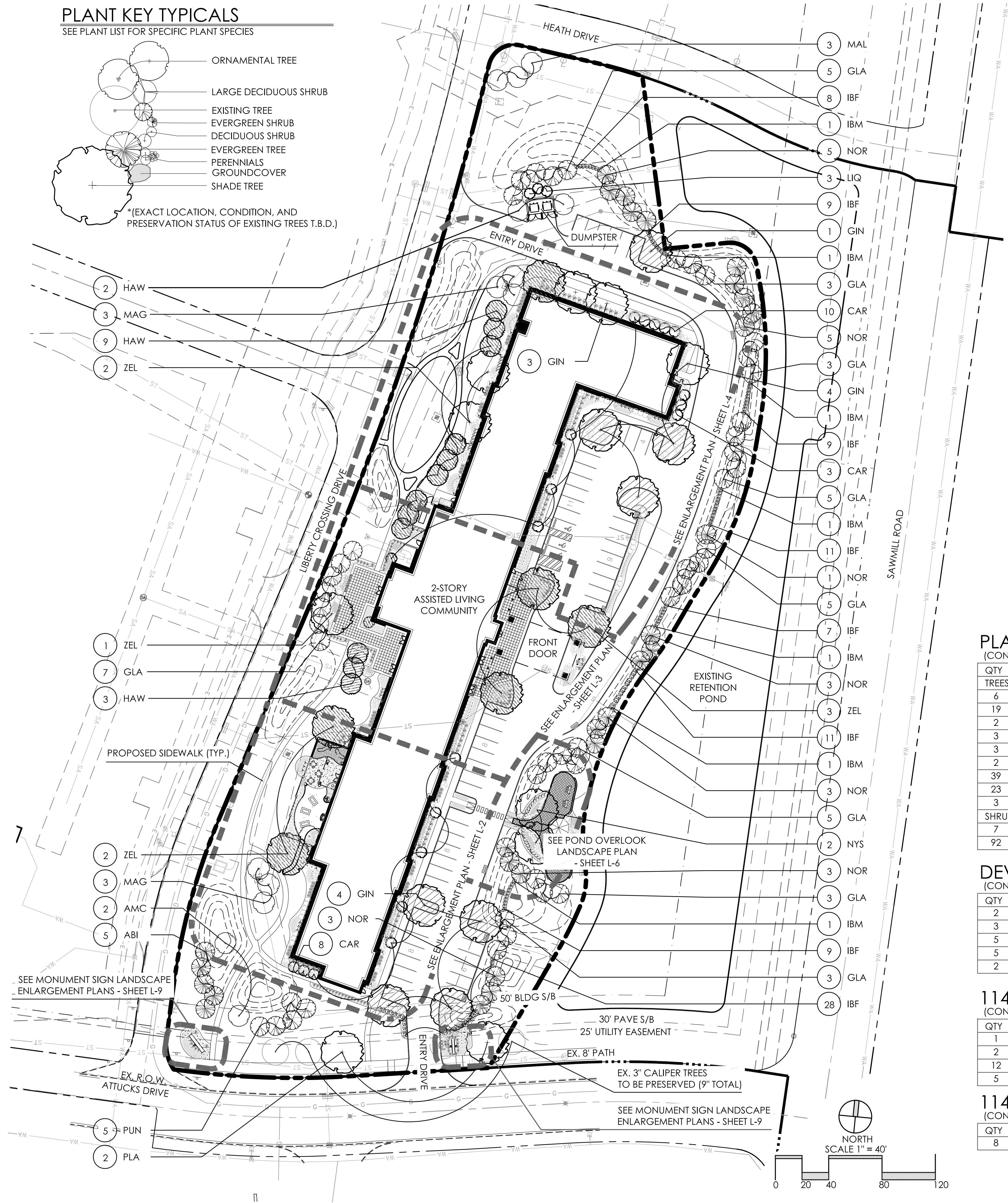
EVERGREEN TREE

PERENNIALS

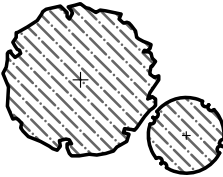
GROUNDCOVER

SHADE TREE

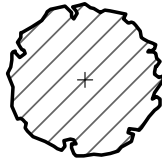
\*[EXACT LOCATION, CONDITION, AND PRESERVATION STATUS OF EXISTING TREES T.B.D.]



LEGEND



1145.30 REQUIREMENT TREE



1145.31 REQUIREMENT TREE

1145.30 MINIMUM REQ.'D TREES

REQUIRED	PROPOSED
MIN. OF 57 CALIPER INCHES FOR 76,436 SQ. FT. OF COVERAGE	9" PRESERVED TREES + 20 TREES @ 2 1/2" CAL. FOR 59 TOTAL CALIPER INCHES

1145.31 PARKING AREA TREE REQ.'S

REQUIRED	PROPOSED
MIN. 1 TREE @ 1 1/2" CAL. PER 8 SPACES	8 TREES @ 2 1/2" CAL. FOR 60 SPACES

1145.32 BLDG. FOUNDATION REQ.'S

REQUIRED	PROPOSED
MINIMUM:  70% PLANTED  5 SHRUBS/40 L.F. PERIMETER(185)  10 PERENNIALS OR ANNUALS/40 L.F. PERIMETER(370)	MINIMUM:  95% PLANTED  278 SHRUBS FOR 1,470 L.F. PERIMETER  455 PERENNIALS OR ANNUALS FOR 1,470 L.F. PERIMETER

PLANT LIST

(CONTRACTOR RESPONSIBLE FOR ALL PLANTS SHOWN ON PLAN)

QTY	KEY	BOTANICAL NAME	COMMON NAME	SIZE	COND.	REMARKS
TREES						
6	MAG	MAGNOLIA VIRGINIANA	SWEETBAY MAGNOLIA	8-10' HT.	B & B	MULTI-STEM
19	CAR	CARPINUS BETULUS 'FRANS FONTAINE'	COLUMNAR HORNBEAM	2.5" CAL.	B & B	MATCH FORM
2	HAW	CRATAEGUS VIRIDUS 'WINTER KING'	WINTER KING HAWTHORN	2.5" CAL.	B & B	MATCH FORM
3	GIN	GINKGO BILOBA 'AUTUMN GOLD'	AUTUMN GOLD GINKGO	2.5" CAL.	B & B	
3	LIQ	LIQUIDAMBAR STYRACIFLUA 'SLENDER SILHOUETTE'	SLENDER SILHOUETTE SWEETGUM	2.5" CAL.	B & B	
2	NYS	NYSSA SYLVATICA 'WILDFIRE'	WILDFIRE BLACK GUM	2.5" CAL.	B & B	
39	GLA	PICEA GLAUCA	WHITE SPRUCE	6-7' HT.	B & B	
23	NOR	PICEA ABIES	NORWAY SPRUCE	6-7' HT.	B & B	
3	ZEL	ZELKOVA SERRATA 'GREEN VASE'	GREEN VASE ZELKOVA	2.5" CAL.	B & B	
SHRUBS						
7	IBM	ILEX xMESERVEAE 'BLUE PRINCE'	BLUE PRINCE HOLLY	24" HGT.	B&B	
92	IBF	ILEX xMESERVEAE 'BLUE PRINCESS'	BLUE PRINCESS HOLLY	24" HGT.	B&B	

DEVELOPMENT TEXT REQUIRED TREES

(CONTRACTOR RESPONSIBLE FOR ALL PLANTS SHOWN ON PLAN)

QTY	KEY	BOTANICAL NAME	COMMON NAME	SIZE	COND.	REMARKS
2	AMC	AMELANCHIER CANADENSIS	SERVICEBERRY	2" CAL.	B & B	
3	MAL	MALUS 'SNOWDRIFT'	SNOWDRIFT CRABAPPLE	1.5" CAL.	B & B	
5	PUN	PICEA PUNGENS 'GLAUCA'	COLORADO BLUE SPRUCE	8-12' HT.	B & B	
5	ABI	PICEA ABIES	NORWAY SPRUCE	8-12' HT.	B & B	
2	PLA	PLATANUS xACERFOLIA 'BLOODGOOD'	BLOODGOOD PLANETREE	3" CAL.	B & B	

1145.30 COVERAGE REQUIREMENT TREE LIST

(CONTRACTOR RESPONSIBLE FOR ALL PLANTS SHOWN ON PLAN)

QTY	KEY	BOTANICAL NAME	COMMON NAME	SIZE	COND.	REMARKS	TOTAL CAL.
1	GIN	GINKGO BILOBA 'AUTUMN GOLD'	AUTUMN GOLD GINKGO	2.5" CAL.	B & B		2.5"
2	CAR	CARPINUS BETULUS 'FRANS FONTAINE'	COLUMNAR HORNBEAM	2.5" CAL.	B & B		5"
12	HAW	CRATAEGUS VIRIDUS 'WINTER KING'	WINTER KING HAWTHORN	2.5" CAL.	B & B		30"
5	ZEL	ZELKOVA SERRATA 'GREEN VASE'	GREEN VASE ZELKOVA	2.5" CAL.	B & B		12.5"
							59" (INCL. 9" PRESERVED)

1145.31 REQUIREMENT TREE LIST

(CONTRACTOR RESPONSIBLE FOR ALL PLANTS SHOWN ON PLAN)

QTY	KEY	BOTANICAL NAME	COMMON NAME	SIZE	COND.	REMARKS	TOTAL CAL.
8	GIN	GINKGO BILOBA 'AUTUMN GOLD'	AUTUMN GOLD GINKGO	2.5" CAL.	B & B		20" (+8")

GENERAL PLANTING NOTES:

- ALL PLANTS SHALL MEET OR EXCEED STANDARDS SET IN THE USA STANDARD FOR NURSERY STOCK.
- ALL PLANTING OPERATIONS SHALL ADHERE TO THE AMERICAN ASSOCIATION OF NURSERYMEN STANDARDS.
- PLANT LOCATIONS AND BEDS SHALL BE LOCATED BY CONTRACTOR AND APPROVED BY LANDSCAPE ARCHITECT PRIOR TO INSTALLATION.
- PLANTING BEDS SHALL HAVE A MINIMUM 3" DEEP SHREDDED HARDWOOD BARK MULCH. MULCH HEDGES IN A CONTINUOUS BED.
- ALL PLANTING BEDS TO BE TILLED TO A MINIMUM DEPTH OF 12".
- ALL PLANTING BEDS TO BE FERTILIZED WITH 10-10-10 OR APPROVED EQUAL.
- SODDING / SEEDING BY LANDSCAPE CONTRACTOR.
- THE LOCATION OF THE EXISTING UNDERGROUND UTILITIES ARE SHOWN IN AN APPROXIMATE WAY ONLY AND HAVE NOT BEEN INDEPENDENTLY VERIFIED BY THE OWNER OR ITS REPRESENTATIVE. THE CONTRACTOR SHALL DETERMINE THE EXACT LOCATION OF ALL EXISTING UTILITIES PRIOR TO COMMENCING WORK AND AGREES TO BE FULLY RESPONSIBLE FOR ANY AND ALL DAMAGES WHICH MIGHT BE OCCASIONED BY THE CONTRACTOR'S FAILURE TO EXACTLY LOCATE AND PRESERVE ANY AND ALL UNDERGROUND UTILITIES.
- ALL AREAS DISTURBED BY CONSTRUCTION ARE TO BE RESTORED, FINE GRADED AND SEEDED/ SODDED.
- ALL EXISTING PLANT MATERIAL SHOWN ON THIS PLAN IS TO BE PRESERVED UNLESS SPECIFICALLY NOTED OTHERWISE.

CODED CONSTRUCTION NOTES:

- ① LAWN AREA, PROVIDE POSITIVE DRAINAGE ACROSS ALL SURFACES.
- ② LANDSCAPE AREA, PROVIDE 3" DEPTH HARDWOOD MULCH, POSITIVE DRAINAGE ACROSS ALL SURFACES.
- ③ 18" GRAVEL MOW-STRIP - SEE DETAIL 4, SHEET D-1

REVISIONS


OVERALL  
LANDSCAPE PLAN

SPECTRUM POWELL II  
PREPARED FOR  
ADVANCED CIVIL DESIGN  
422 BEECHER ROAD  
GAHANNA, OH 43230

Faris Planning & Design

LAND PLANNING LANDSCAPE ARCHITECTURE  
Sulte 401  
243 N. 5th Street  
P (614) 487-1964  
Columbus, OH 43215  
www.farisplanninganddesign.com

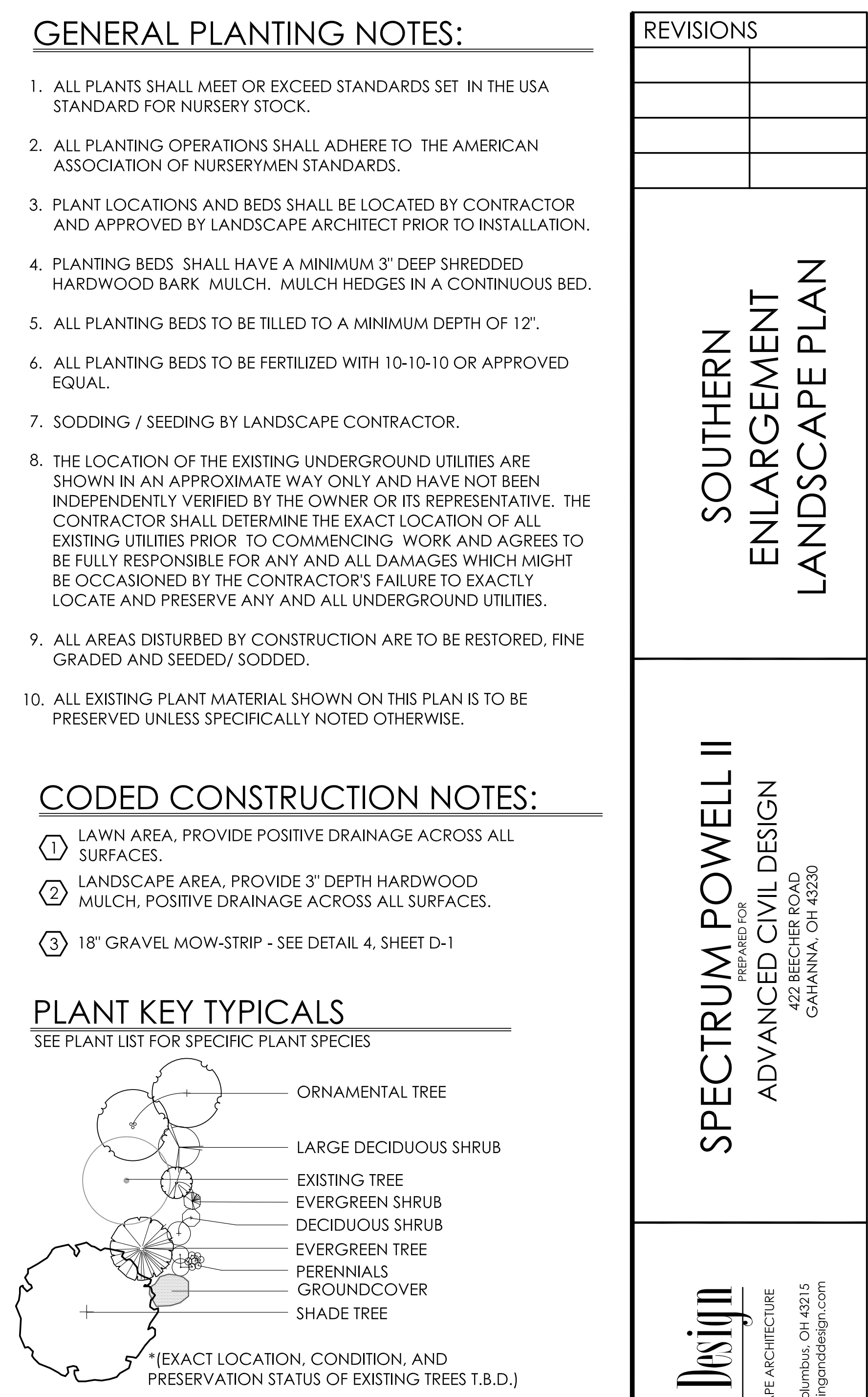
DATE 6/24/15

PROJECT 14075

SHEET

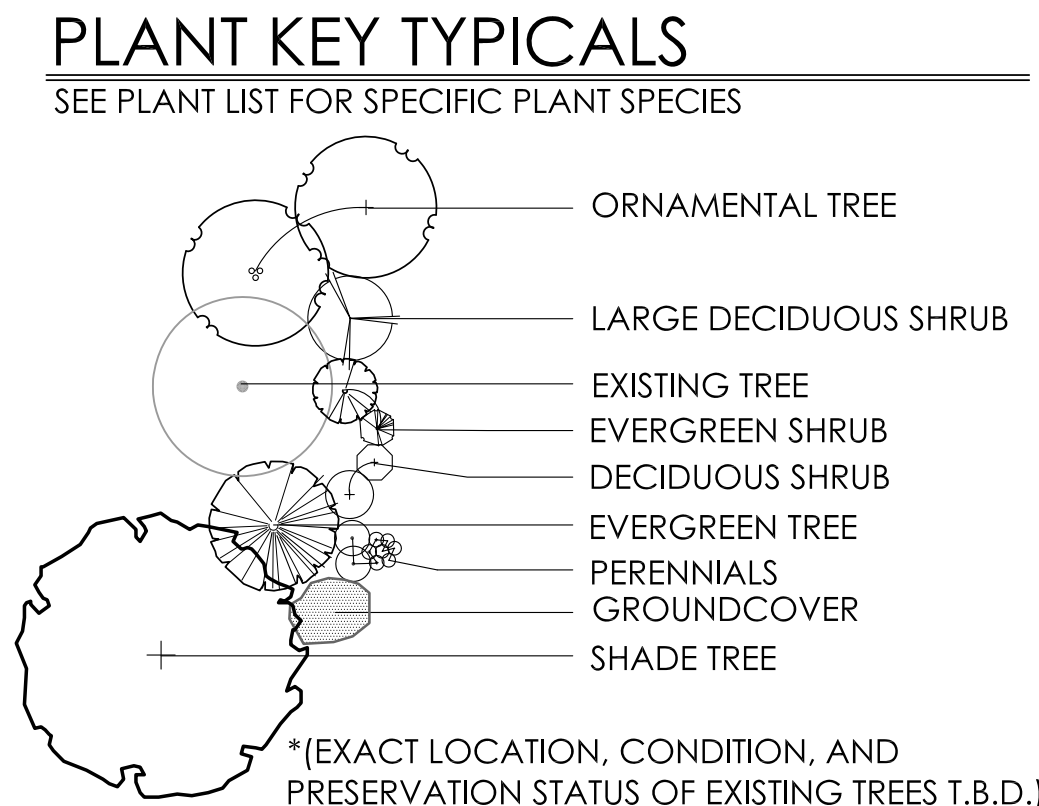
L-1





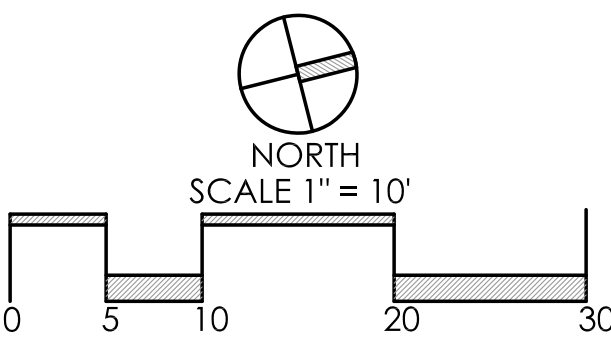
(CONTRACTOR RESPONSIBLE FOR ALL PLANTS SHOWN ON PLAN)

[illegible]

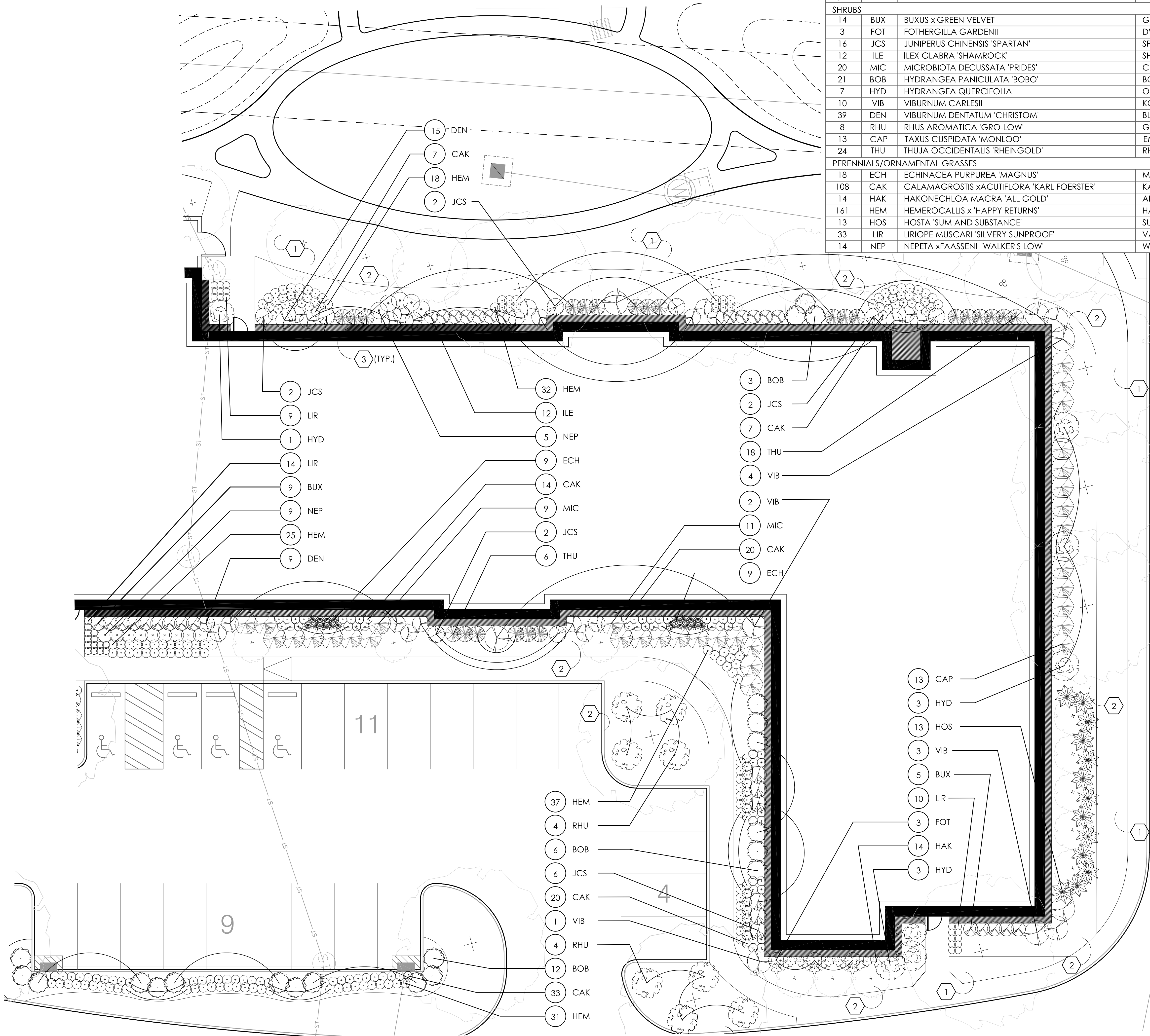


- ① LAWN AREA, PROVIDE POSITIVE DRAINAGE ACROSS ALL SURFACES.
- ② LANDSCAPE AREA, PROVIDE 3" DEPTH HARDWOOD MULCH, POSITIVE DRAINAGE ACROSS ALL SURFACES.
- ③ 18" GRAVEL MOW-STRIP - SEE DETAIL 4, SHEET D-1

QTY	KEY	BOTANICAL NAME	COMMON NAME	SIZE	COND.	REMARKS
SHRUBS						
23	BUX	BUXUS x'GREEN VELVET'	GREEN VELVET BOXWOOD	18" HGT.	B&B	
8	FOT	FOTHERGILLA GARDENII	DWARF FOTHERGILLA	18" HGT.	B&B	
3	JCS	JUNIPERUS CHINENSIS 'SPARTAN'	SPARTAN JUNIPER	8' HGT.	B&B	
4	BLU	JUNIPERUS SCOPULORUM 'WICHITA BLUE'	WICHITA BLUE JUNIPER	5-6' HT.	B&B	
16	SQU	JUNIPERUS SQUAMATA 'BLUE STAR'	BLUE STAR JUNIPER	18" SPR.	B&B	
3	ILE	ILEX GLABRA 'SHAMROCK'	SHAMROCK INKBERRY	18" HT.	B&B	
6	BOB	HYDRANGEA PANICULATA 'BOBO'	BOBO HYDRANGEA	24" HGT.	B&B	
1	HYD	HYDRANGEA QUERCIFOLIA	OAKLEAF HYDRANGEA	24" HGT.	B&B	
11	VIB	VIBURNUM CARLESII	KOREANSPICE VIBURNUM	24" HGT.	B&B	
9	DEN	VIBURNUM DENTATUM 'CHRISTOM'	BLUE MUFFIN VIBURNUM	24" HGT.	B&B	
11	CAP	TAXUS CUSPIDATA 'MONLOO'	EMERALD SPREADER YEW	18" SPR.	B&B	
33	THU	THUJA OCCIDENTALIS 'RHEINGOLD'	RHEINGOLD ARBORVITAE	18" HGT.	B&B	
PERENNIALS/ORNAMENTAL GRASSES						
53	ECH	ECHINACEA PURPUREA 'MAGNUS'	MAGNUS CONEFLOWER	NO. 1	CONT.	
91	CAK	CALAMAGROSIS xACUTIFLORA 'KARL FOERSTER'	KARL FOERSTER FEATHER REED GRASS	NO. 2	CONT.	
116	HEM	HEMEROCALIS x 'HAPPY RETURNS'	HAPPY RETURNS DAYLILY	NO. 1	CONT.	
59	LIR	LIRIOPE MUSCARI 'SILVERY SUNPROOF'	VARIEGATED LILYPURF	NO. 1	CONT.	
18	NEP	NEPETA xFAASSENII 'WALKER'S LOW'	WALKER'S LOW CATMINT	NO. 1	CONT.	

[illegible]





PLANT LIST

(CONTRACTOR RESPONSIBLE FOR ALL PLANTS SHOWN ON PLAN)

QTY	KEY	BOTANICAL NAME	COMMON NAME	SIZE	COND.	REMARKS
SHRUBS						
14	BUX	BUXUS x'GREEN VELVET'	GREEN VELVET BOXWOOD	18" HGT.	B&B	
3	FOT	FOTHERGILLA GARDENII	DWARF FOTHERGILLA	18" HGT.	B&B	
16	JCS	JUNIPERUS CHINENSIS 'SPARTAN'	SPARTAN JUNIPER	8' HGT.	B&B	
12	ILE	ILEX GLABRA 'SHAMROCK'	SHAMROCK INKBERRY	18" HT.	B&B	
20	MIC	MICROBIOTA DECUSSATA 'PRIDES'	CELTIC PRIDE SIBERIAN CYPRESS	24" SPR.	B&B	
21	BOB	HYDRANGEA PANICULATA 'BOBO'	BOBO HYDRANGEA	24" HGT.	B&B	
7	HYD	HYDRANGEA QUERCIFOLIA	OAKLEAF HYDRANGEA	24" HGT.	B&B	
10	VIB	VIBURNUM CARLESII	KOREANSPICE VIBURNUM	24" HGT.	B&B	
39	DEN	VIBURNUM DENTATUM 'CHRISTOM'	BLUE MUFFIN VIBURNUM	24" HGT.	B&B	
8	RHU	RHUS AROMATICA 'GRO-LOW'	GRO-LOW FRAGRANT SUMAC	24" SPR.	B&B	
13	CAP	TAXUS CUSPIDATA 'MONLOO'	EMERALD SPREADER YEW	18" SPR.	B&B	
24	THU	THUJA OCCIDENTALIS 'RHEINGOLD'	RHEINGOLD ARBORVITAE	18" HGT.	B&B	
PERENNIALS/ORNAMENTAL GRASSES						
18	ECH	ECHINACEA PURPUREA 'MAGNUS'	MAGNUS CONEFLOWER	NO. 1	CONT.	
108	CAK	CALAMAGROSTIS xACUTIFLORA 'KARL FOERSTER'	KARL FOERSTER FEATHER REED GRASS	NO. 2	CONT.	
14	HAK	HAKONECHLOA MACRA 'ALL GOLD'	ALL GOLD JAPANESE FOREST GRASS	NO. 2	CONT.	
161	HEM	HEMEROCALLIS x 'HAPPY RETURNS'	HAPPY RETURNS DAYLILY	NO. 1	CONT.	
13	HOS	HOSTA 'SUM AND SUBSTANCE'	SUM AND SUBSTANCE HOSTA	NO. 1	CONT.	
33	LIR	LIRIOPE MUSCARI 'SILVERY SUNPROOF'	VARIEGATED LILYTURF	NO. 1	CONT.	
14	NEP	NEPETA xFAASSENII 'WALKER'S LOW'	WALKER'S LOW CATMINT	NO. 1	CONT.	

GENERAL PLANTING NOTES:

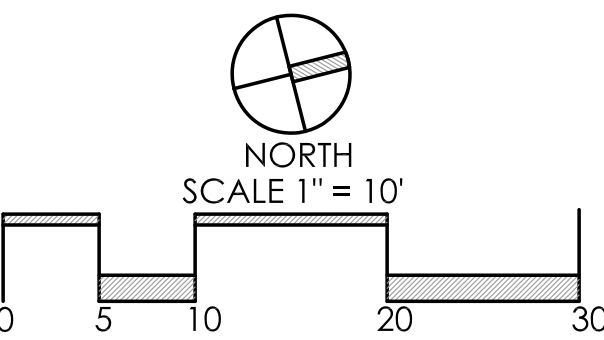
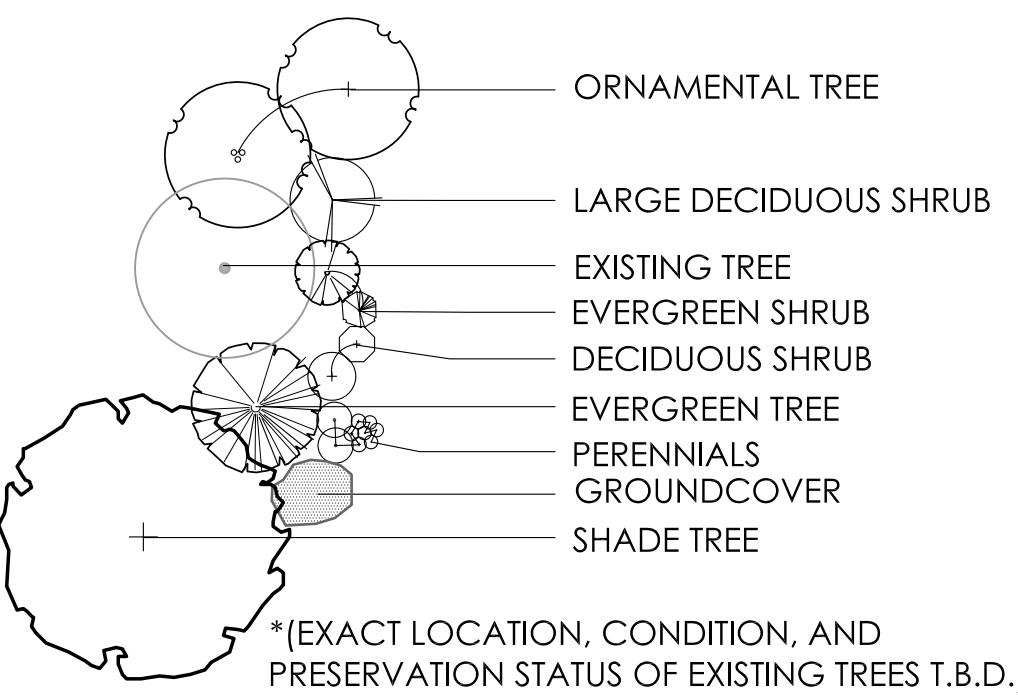
- ALL PLANTS SHALL MEET OR EXCEED STANDARDS SET IN THE USA STANDARD FOR NURSERY STOCK.
- ALL PLANTING OPERATIONS SHALL ADHERE TO THE AMERICAN ASSOCIATION OF NURSERYMEN STANDARDS.
- PLANT LOCATIONS AND BEDS SHALL BE LOCATED BY CONTRACTOR AND APPROVED BY LANDSCAPE ARCHITECT PRIOR TO INSTALLATION.
- PLANTING BEDS SHALL HAVE A MINIMUM 3" DEEP SHREDDED HARDWOOD BARK MULCH. MULCH HEDGES IN A CONTINUOUS BED.
- ALL PLANTING BEDS TO BE TILLED TO A MINIMUM DEPTH OF 12".
- ALL PLANTING BEDS TO BE FERTILIZED WITH 10-10-10 OR APPROVED EQUAL.
- SODDING / SEEDING BY LANDSCAPE CONTRACTOR.
- THE LOCATION OF THE EXISTING UNDERGROUND UTILITIES ARE SHOWN IN AN APPROXIMATE WAY ONLY AND HAVE NOT BEEN INDEPENDENTLY VERIFIED BY THE OWNER OR ITS REPRESENTATIVE. THE CONTRACTOR SHALL DETERMINE THE EXACT LOCATION OF ALL EXISTING UTILITIES PRIOR TO COMMENCING WORK AND AGREES TO BE FULLY RESPONSIBLE FOR ANY AND ALL DAMAGES WHICH MIGHT BE OCCASIONED BY THE CONTRACTOR'S FAILURE TO EXACTLY LOCATE AND PRESERVE ANY AND ALL UNDERGROUND UTILITIES.
- ALL AREAS DISTURBED BY CONSTRUCTION ARE TO BE RESTORED, FINE GRADED AND SEEDED/ SODDED.
- ALL EXISTING PLANT MATERIAL SHOWN ON THIS PLAN IS TO BE PRESERVED UNLESS SPECIFICALLY NOTED OTHERWISE.

CODED CONSTRUCTION NOTES:

- 1 LAWN AREA, PROVIDE POSITIVE DRAINAGE ACROSS ALL SURFACES.
- 2 LANDSCAPE AREA, PROVIDE 3" DEPTH HARDWOOD MULCH, POSITIVE DRAINAGE ACROSS ALL SURFACES.
- 3 18" GRAVEL MOW-STRIP - SEE DETAIL 4, SHEET D-1

PLANT KEY TYPICALS

SEE PLANT LIST FOR SPECIFIC PLANT SPECIES



REVISIONS

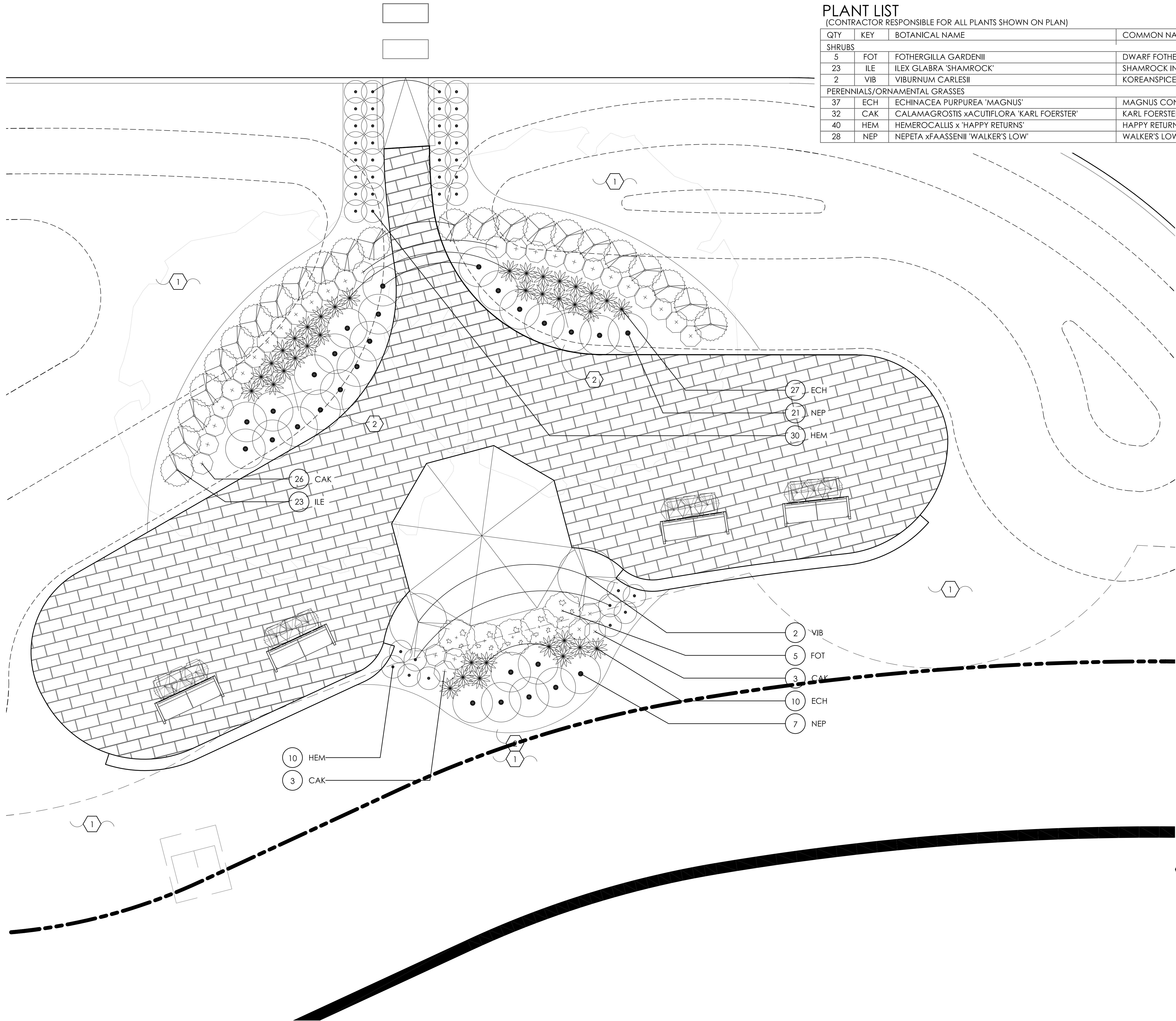

NORTHERN  
ENLARGEMENT  
LANDSCAPE PLAN

SPECTRUM POWELL II  
PREPARED FOR  
ADVANCED CIVIL DESIGN  
422 BEECHER ROAD  
GAHANNA, OH 43230

Faris Planning & Design  
LAND PLANNING LANDSCAPE ARCHITECTURE  
243 N. 5th Street  
P (614) 487-1964  
SUIITE 401  
Columbus, OH 43215  
www.farisplanninganddesign.com

DATE	6/24/15
PROJECT	14075
SHEET	





PLANT LIST  
(CONTRACTOR RESPONSIBLE FOR ALL PLANTS SHOWN ON PLAN)

QTY	KEY	BOTANICAL NAME	COMMON NAME	SIZE	COND.	REMARKS
SHRUBS						
5	FOT	FOTHERGILLA GARDENII	DWARF FOTHERGILLA	18" HT.	B&B	
23	ILE	ILEX GLABRA 'SHAMROCK'	SHAMROCK INKBERRY	18" HT.	B&B	
2	VIB	VIBURNUM CARLESII	KOREANSPICE VIBURNUM	24" HT.	B&B	
PERENNIALS/ORNAMENTAL GRASSES						
37	ECH	ECHINACEA PURPUREA 'MAGNUS'	MAGNUS CONEFLOWER	NO. 1	CONT.	
32	CAK	CALAMAGROSTIS xACUTIFLORA 'KARL FOERSTER'	KARL FOERSTER FEATHER REED GRASS	NO. 1	CONT.	
40	HEM	HEMEROCALLIS x 'HAPPY RETURNS'	HAPPY RETURNS DAYLILY	NO. 1	CONT.	
28	NEP	NEPETA xFAASSENII 'WALKER'S LOW'	WALKER'S LOW CATMINT	NO. 1	CONT.	

GENERAL PLANTING NOTES:

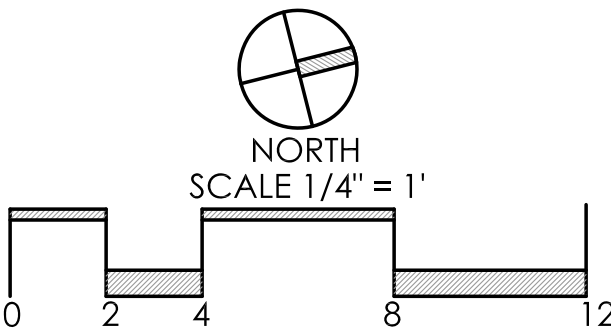
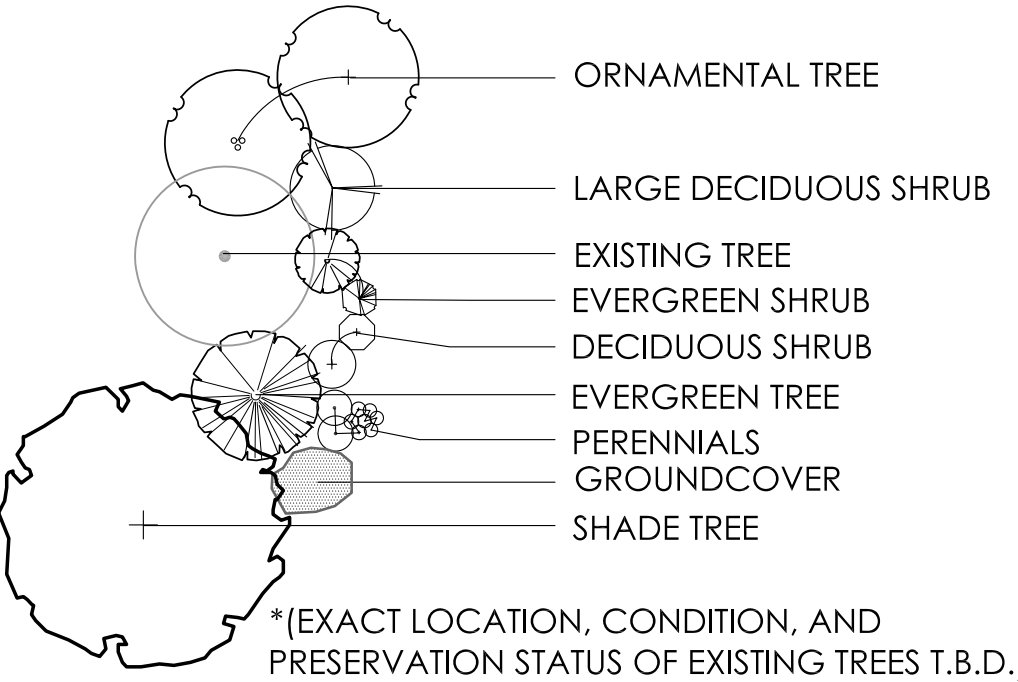
- ALL PLANTS SHALL MEET OR EXCEED STANDARDS SET IN THE USA STANDARD FOR NURSERY STOCK.
- ALL PLANTING OPERATIONS SHALL ADHERE TO THE AMERICAN ASSOCIATION OF NURSERYMEN STANDARDS.
- PLANT LOCATIONS AND BEDS SHALL BE LOCATED BY CONTRACTOR AND APPROVED BY LANDSCAPE ARCHITECT PRIOR TO INSTALLATION.
- PLANTING BEDS SHALL HAVE A MINIMUM 3" DEEP SHREDDED HARDWOOD BARK MULCH. MULCH HEDGES IN A CONTINUOUS BED.
- ALL PLANTING BEDS TO BE TILLED TO A MINIMUM DEPTH OF 12".
- ALL PLANTING BEDS TO BE FERTILIZED WITH 10-10-10 OR APPROVED EQUAL.
- SODDING / SEEDING BY LANDSCAPE CONTRACTOR.
- THE LOCATION OF THE EXISTING UNDERGROUND UTILITIES ARE SHOWN IN AN APPROXIMATE WAY ONLY AND HAVE NOT BEEN INDEPENDENTLY VERIFIED BY THE OWNER OR ITS REPRESENTATIVE. THE CONTRACTOR SHALL DETERMINE THE EXACT LOCATION OF ALL EXISTING UTILITIES PRIOR TO COMMENCING WORK AND AGREES TO BE FULLY RESPONSIBLE FOR ANY AND ALL DAMAGES WHICH MIGHT BE OCCASIONED BY THE CONTRACTOR'S FAILURE TO EXACTLY LOCATE AND PRESERVE ANY AND ALL UNDERGROUND UTILITIES.
- ALL AREAS DISTURBED BY CONSTRUCTION ARE TO BE RESTORED, FINE GRADED AND SEEDED/ SODDED.
- ALL EXISTING PLANT MATERIAL SHOWN ON THIS PLAN IS TO BE PRESERVED UNLESS SPECIFICALLY NOTED OTHERWISE.

CODED CONSTRUCTION NOTES:

- 1 LAWN AREA, PROVIDE POSITIVE DRAINAGE ACROSS ALL SURFACES.
- 2 LANDSCAPE AREA, PROVIDE 3" DEPTH HARDWOOD MULCH, POSITIVE DRAINAGE ACROSS ALL SURFACES.
- 3 18" GRAVEL MOW-STRIP - SEE DETAIL 4, SHEET D-1

PLANT KEY TYPICALS

SEE PLANT LIST FOR SPECIFIC PLANT SPECIES



REVISIONS

POND OVERLOOK  
LANDSCAPE PLAN

SPECTRUM POWELL II  
PREPARED FOR  
ADVANCED CIVIL DESIGN  
422 BEECHER ROAD  
GAHANNA, OH 43230

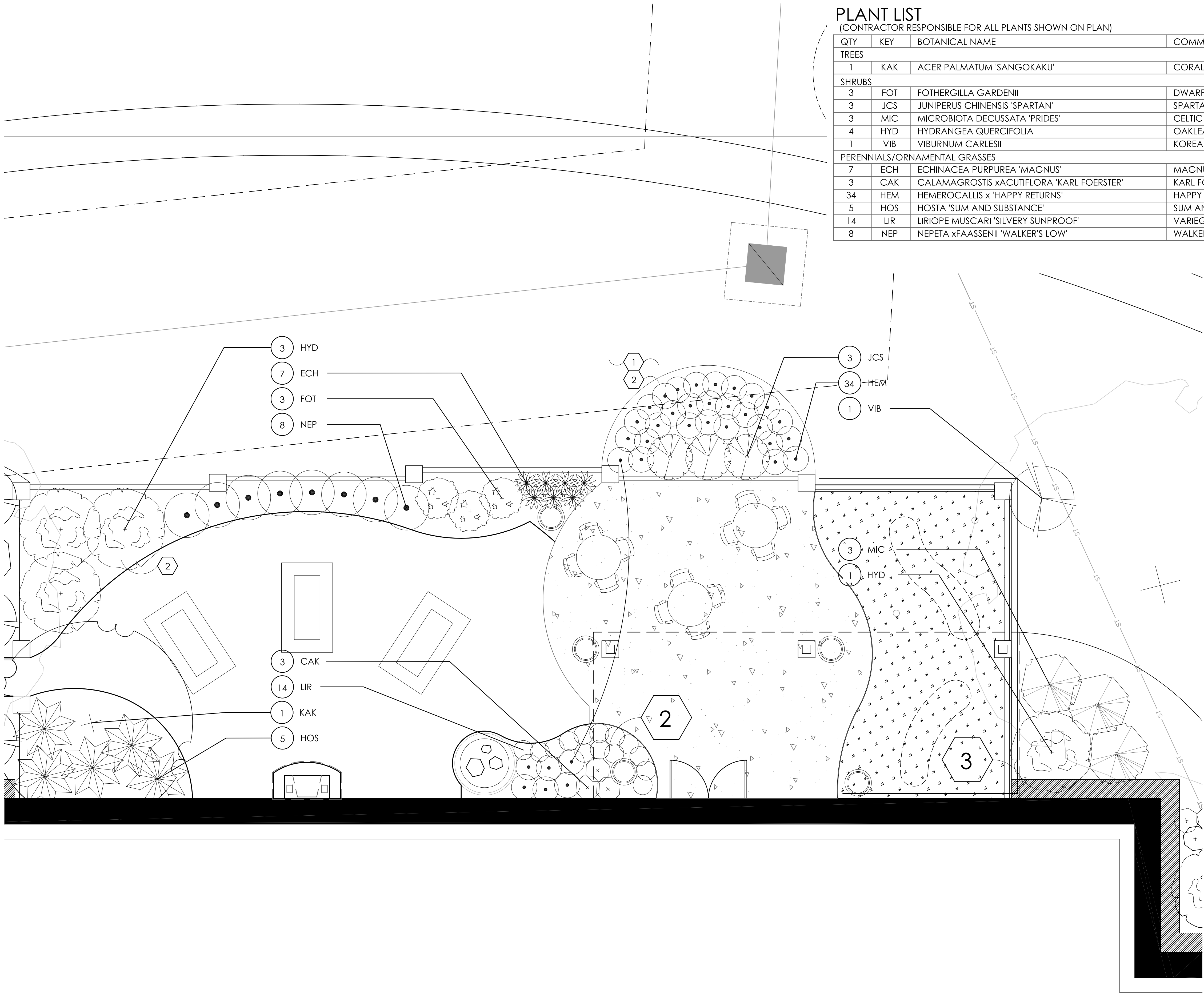
Paris Planning & Design  
LAND PLANNING  
243 N. 5th Street  
P (614) 487-1964  
LANDSCAPE ARCHITECTURE  
Columbus, OH 43215  
Suite 401  
www.parisplanninganddesign.com

DATE6/24/15

PROJECT14075

SHEET

L-6



PLANT LIST

(CONTRACTOR RESPONSIBLE FOR ALL PLANTS SHOWN ON PLAN)

QTY	KEY	BOTANICAL NAME	COMMON NAME	SIZE	COND.	REMARKS
TREES						
1	KAK	ACER PALMATUM 'SANGOKAKU'	CORAL BARK JAPANESE MAPLE	8-10' HGT.	B&B	MULTI-STEM
SHRUBS						
3	FOT	FOTHERGILLA GARDENII	DWARF FOTHERGILLA	18" HGT.	B&B	
3	JCS	JUNIPERUS CHINENSIS 'SPARTAN'	SPARTAN JUNIPER	8' HGT.	B&B	
3	MIC	MICROBIOTA DECUSSATA 'PRIDES'	CELTIC PRIDE SIBERIAN CYPRESS	24" SPR.	B&B	
4	HYD	HYDRANGEA QUERCIFOLIA	OAKLEAF HYDRANGEA	24" HGT.	B&B	
1	VIB	VIBURNUM CARLESII	KOREANSPICE VIBURNUM	24" HGT.	B&B	
PERENNIALS/ORNAMENTAL GRASSES						
7	ECH	ECHINACEA PURPUREA 'MAGNUS'	MAGNUS CONEFLOWER	NO. 1	CONT.	
3	CAK	CALAMAGROSTIS xACUTIFLORA 'KARL FOERSTER'	KARL FOERSTER FEATHER REED GRASS	NO. 2	CONT.	
34	HEM	HEMEROCALLIS x 'HAPPY RETURNS'	HAPPY RETURNS DAYLILY	NO. 1	CONT.	
5	HOS	HOSTA 'SUM AND SUBSTANCE'	SUM AND SUBSTANCE HOSTA	NO. 1	CONT.	
14	LIR	LIRIOPE MUSCARI 'SILVERY SUNPROOF'	VARIEGATED LILYTURF	NO. 1	CONT.	
8	NEP	NEPETA xFAASSENII 'WALKER'S LOW'	WALKER'S LOW CATMINT	NO. 1	CONT.	

GENERAL PLANTING NOTES:

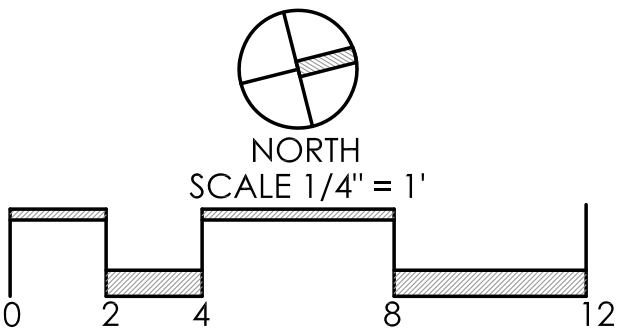
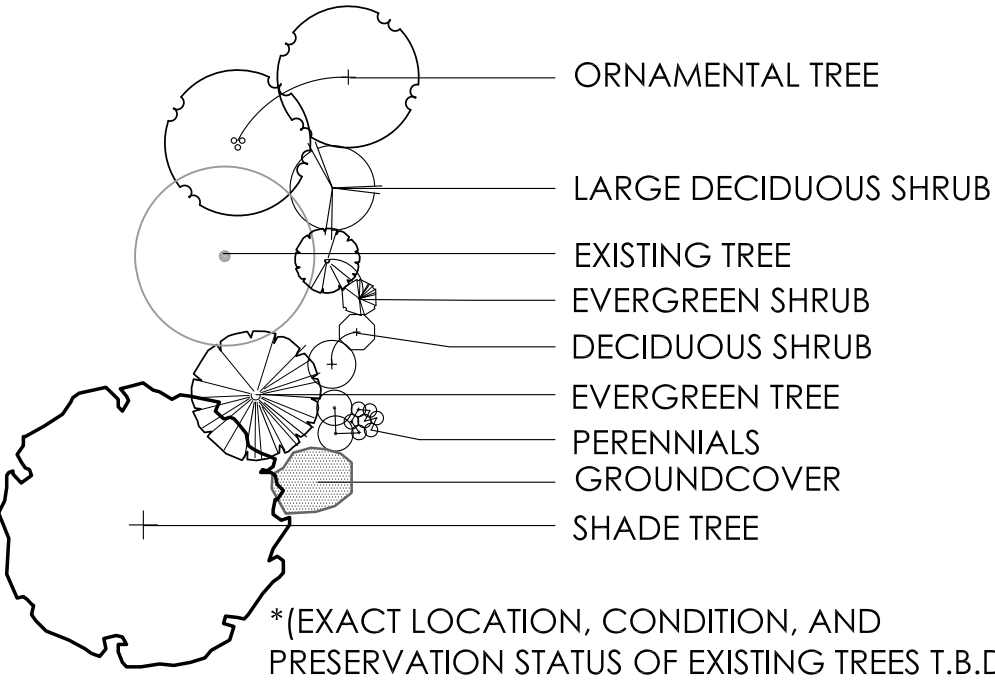
- ALL PLANTS SHALL MEET OR EXCEED STANDARDS SET IN THE USA STANDARD FOR NURSERY STOCK.
- ALL PLANTING OPERATIONS SHALL ADHERE TO THE AMERICAN ASSOCIATION OF NURSERYMEN STANDARDS.
- PLANT LOCATIONS AND BEDS SHALL BE LOCATED BY CONTRACTOR AND APPROVED BY LANDSCAPE ARCHITECT PRIOR TO INSTALLATION.
- PLANTING BEDS SHALL HAVE A MINIMUM 3" DEEP SHREDDED HARDWOOD BARK MULCH. MULCH HEDGES IN A CONTINUOUS BED.
- ALL PLANTING BEDS TO BE TILLED TO A MINIMUM DEPTH OF 12".
- ALL PLANTING BEDS TO BE FERTILIZED WITH 10-10-10 OR APPROVED EQUAL.
- SODDING / SEEDING BY LANDSCAPE CONTRACTOR.
- THE LOCATION OF THE EXISTING UNDERGROUND UTILITIES ARE SHOWN IN AN APPROXIMATE WAY ONLY AND HAVE NOT BEEN INDEPENDENTLY VERIFIED BY THE OWNER OR ITS REPRESENTATIVE. THE CONTRACTOR SHALL DETERMINE THE EXACT LOCATION OF ALL EXISTING UTILITIES PRIOR TO COMMENCING WORK AND AGREES TO BE FULLY RESPONSIBLE FOR ANY AND ALL DAMAGES WHICH MIGHT BE OCCASIONED BY THE CONTRACTOR'S FAILURE TO EXACTLY LOCATE AND PRESERVE ANY AND ALL UNDERGROUND UTILITIES.
- ALL AREAS DISTURBED BY CONSTRUCTION ARE TO BE RESTORED, FINE GRADED AND SEEDED/ SODDED.
- ALL EXISTING PLANT MATERIAL SHOWN ON THIS PLAN IS TO BE PRESERVED UNLESS SPECIFICALLY NOTED OTHERWISE.

CODED CONSTRUCTION NOTES:

- 1 LAWN AREA, PROVIDE POSITIVE DRAINAGE ACROSS ALL SURFACES.
- 2 LANDSCAPE AREA, PROVIDE 3" DEPTH HARDWOOD MULCH, POSITIVE DRAINAGE ACROSS ALL SURFACES.
- 3 18" GRAVEL MOW-STRIP - SEE DETAIL 4, SHEET D-1

PLANT KEY TYPICALS

SEE PLANT LIST FOR SPECIFIC PLANT SPECIES



REVISIONS


MEMORY CARE GARDEN LANDSCAPE PLAN

SPECTRUM POWELL II

PREPARED FOR  
ADVANCED CIVIL DESIGN  
422 BEECHER ROAD  
GAHANNA, OH 43230

Paris Planning & Design

LAND PLANNING • LANDSCAPE ARCHITECTURE  
243 N. 5th Street  
P (614) 487-1964  
Suite 401  
www.parisplanninganddesign.com

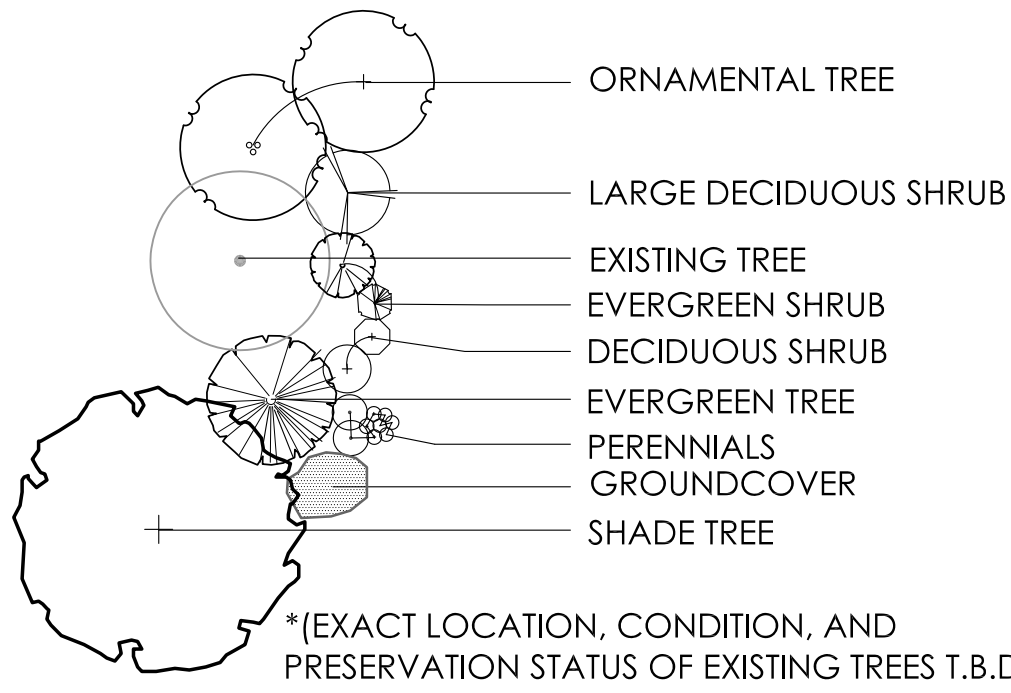
DATE	6/24/15
PROJECT	14075
SHEET	

L-8



PLANT KEY TYPICALS

SEE PLANT LIST FOR SPECIFIC PLANT SPECIES



PLANT LIST

(CONTRACTOR RESPONSIBLE FOR ALL PLANTS SHOWN ON PLAN)

QTY	KEY	BOTANICAL NAME	COMMON NAME	SIZE	COND.
SHRUBS					
2	BLU	JUNIPERUS SCOPULORUM 'WICHITA BLUE'	WICHITA BLUE JUNIPER	5-6' HT.	B&B
18	SQU	JUNIPERUS SQUAMATA 'BLUE STAR'	BLUE STAR JUNIPER	18" SPR.	B&B
4	RHU	RHUS AROMATICA 'GRO-LOW'	GRO-LOW FRAGRANT SUMAC	24" SPR.	B&B
PERENNIALS/ORNAMENTAL GRASSES					
14	CAK	CALAMAGROSTIS XACUTIFLORA 'KARL FOERSTER'	KARL FOERSTER FEATHER REED GRASS	NO. 2	CONT.
54	HEM	HEMEROCALLIS x 'HAPPY RETURNS'	HAPPY RETURNS DAYLILY	NO. 1	CONT.
55	LIR	LIRIOPE MUSCARI 'SILVERY SUNPROOF'	VARIEGATED LILYTURF	NO. 1	CONT.
3	MIS	MISCANTHUS SINENSIS 'GRACILLIMUS'	GRACILLIMUS MAIDEN GRASS	NO. 2	CONT.
24	NEP	NEPETA xFAASSENII 'WALKER'S LOW'	WALKER'S LOW CATMINT	NO. 1	CONT.

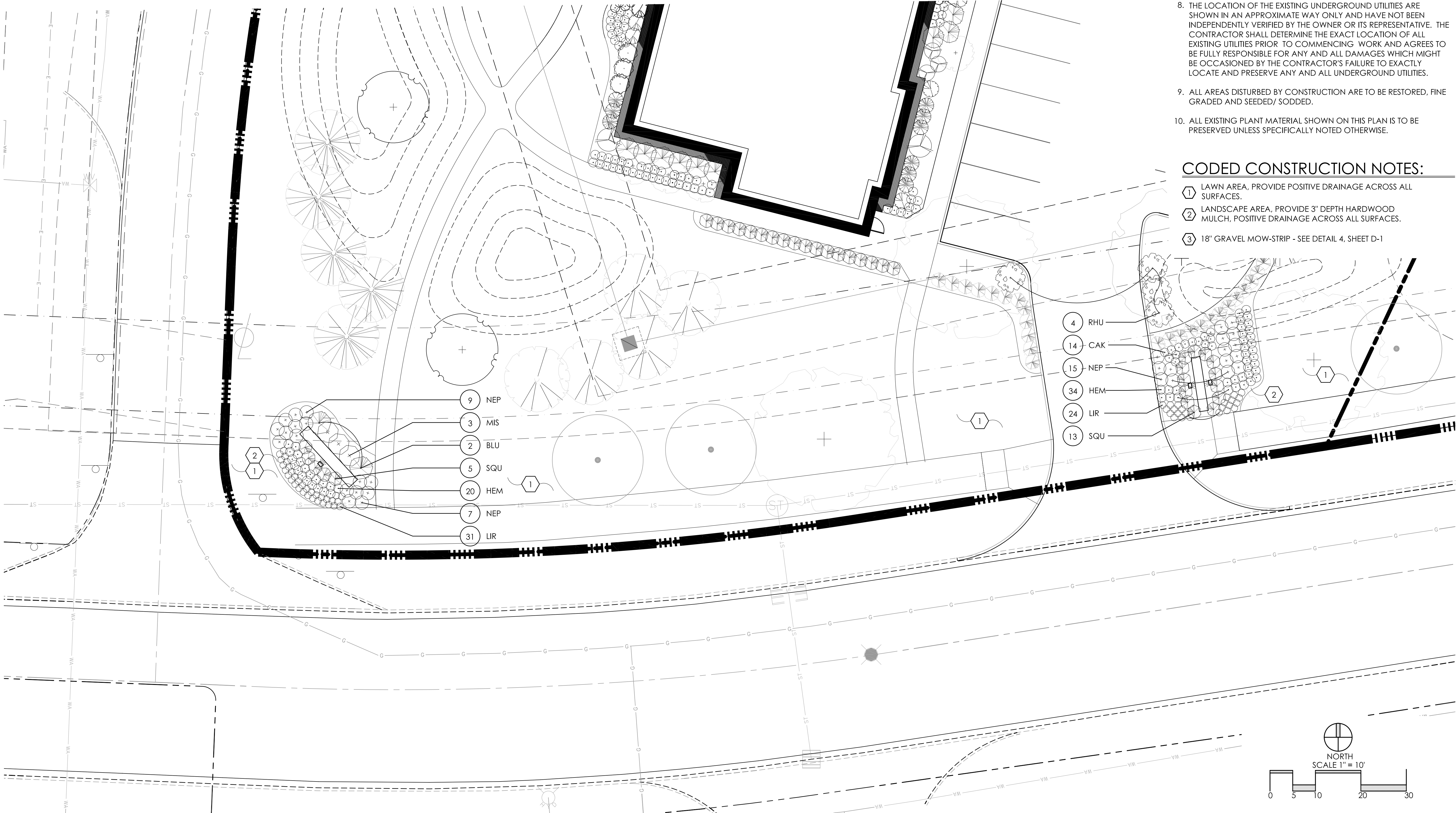
\*NOTE: ANNUALS TO BE PLANTED BY OWNER. NOT IN INITIAL LANDSCAPE COSTS.

GENERAL PLANTING NOTES:

- ALL PLANTS SHALL MEET OR EXCEED STANDARDS SET IN THE USA STANDARD FOR NURSERY STOCK.
- ALL PLANTING OPERATIONS SHALL ADHERE TO THE AMERICAN ASSOCIATION OF NURSERYMEN STANDARDS.
- PLANT LOCATIONS AND BEDS SHALL BE LOCATED BY CONTRACTOR AND APPROVED BY LANDSCAPE ARCHITECT PRIOR TO INSTALLATION.
- PLANTING BEDS SHALL HAVE A MINIMUM 3" DEEP SHREDDED HARDWOOD BARK MULCH. MULCH HEDGES IN A CONTINUOUS BED.
- ALL PLANTING BEDS TO BE TILLED TO A MINIMUM DEPTH OF 12".
- ALL PLANTING BEDS TO BE FERTILIZED WITH 10-10-10 OR APPROVED EQUAL.
- SODDING / SEEDING BY LANDSCAPE CONTRACTOR.
- THE LOCATION OF THE EXISTING UNDERGROUND UTILITIES ARE SHOWN IN AN APPROXIMATE WAY ONLY AND HAVE NOT BEEN INDEPENDENTLY VERIFIED BY THE OWNER OR ITS REPRESENTATIVE. THE CONTRACTOR SHALL DETERMINE THE EXACT LOCATION OF ALL EXISTING UTILITIES PRIOR TO COMMENCING WORK AND AGREES TO BE FULLY RESPONSIBLE FOR ANY AND ALL DAMAGES WHICH MIGHT BE OCCASIONED BY THE CONTRACTOR'S FAILURE TO EXACTLY LOCATE AND PRESERVE ANY AND ALL UNDERGROUND UTILITIES.
- ALL AREAS DISTURBED BY CONSTRUCTION ARE TO BE RESTORED, FINE GRADED AND SEEDED/ SODDED.
- ALL EXISTING PLANT MATERIAL SHOWN ON THIS PLAN IS TO BE PRESERVED UNLESS SPECIFICALLY NOTED OTHERWISE.

CODED CONSTRUCTION NOTES:

- 1 LAWN AREA, PROVIDE POSITIVE DRAINAGE ACROSS ALL SURFACES.
- 2 LANDSCAPE AREA, PROVIDE 3" DEPTH HARDWOOD MULCH. POSITIVE DRAINAGE ACROSS ALL SURFACES.
- 3 18" GRAVEL MOW-STRIP - SEE DETAIL 4, SHEET D-1



REVISIONS

MONUMENT SIGN  
LANDSCAPE PLAN

SPECTRUM POWELL II  
PREPARED FOR  
ADVANCED CIVIL DESIGN  
422 BEECHER ROAD  
GAHANNA, OH 43230

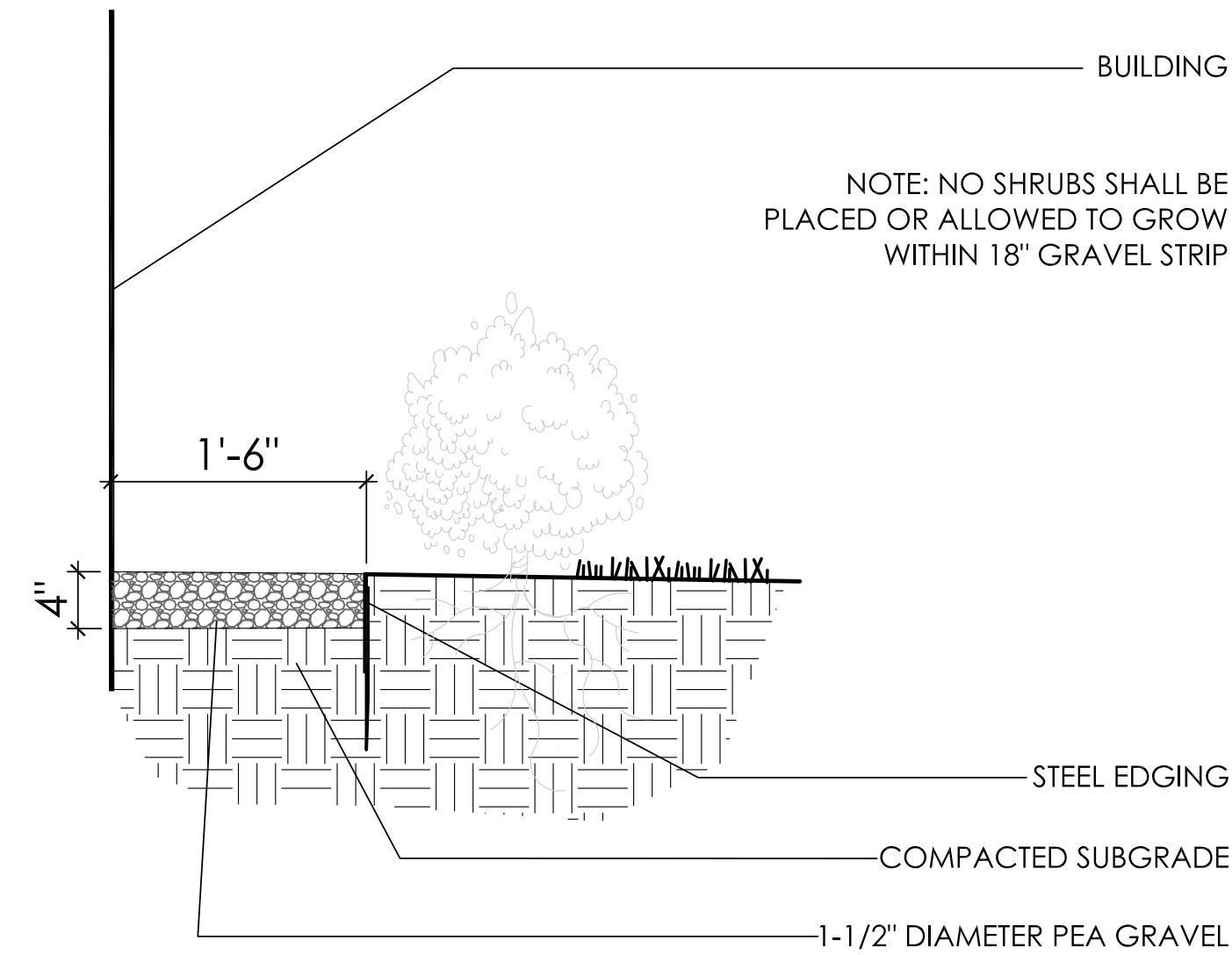
Faris Planning & Design  
LAND PLANNING  
243 N. 5th Street  
P (614) 487-1964  
LANDSCAPE ARCHITECTURE  
Sulte 401  
Columbus, OH 43215  
www.farisplanninganddesign.com

DATE 6/24/15

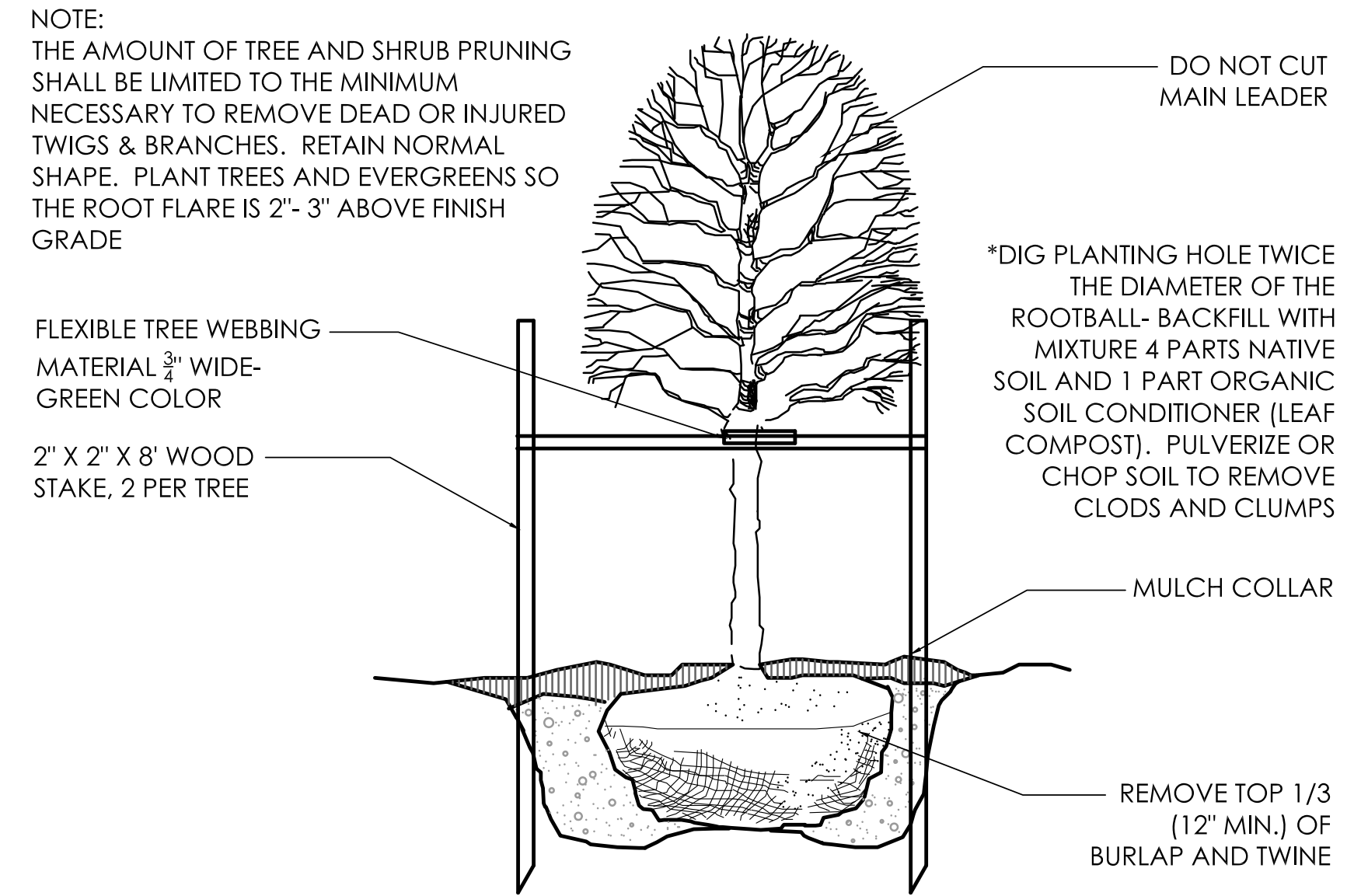
PROJECT 14075

SHEET

L-9

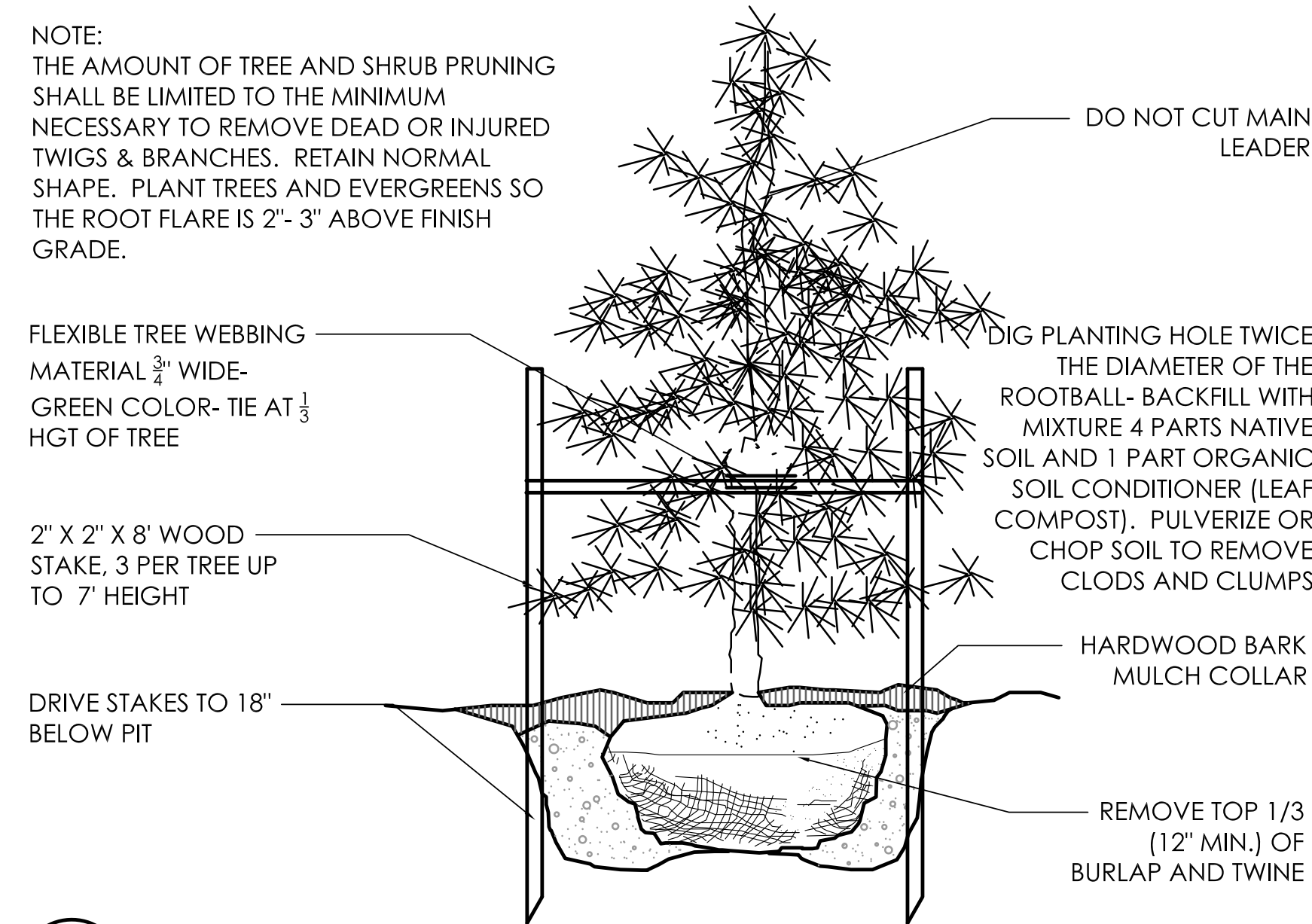


4 GRAVEL MOW STRIP ADJACENT TO BUILDING  
N.T.S.



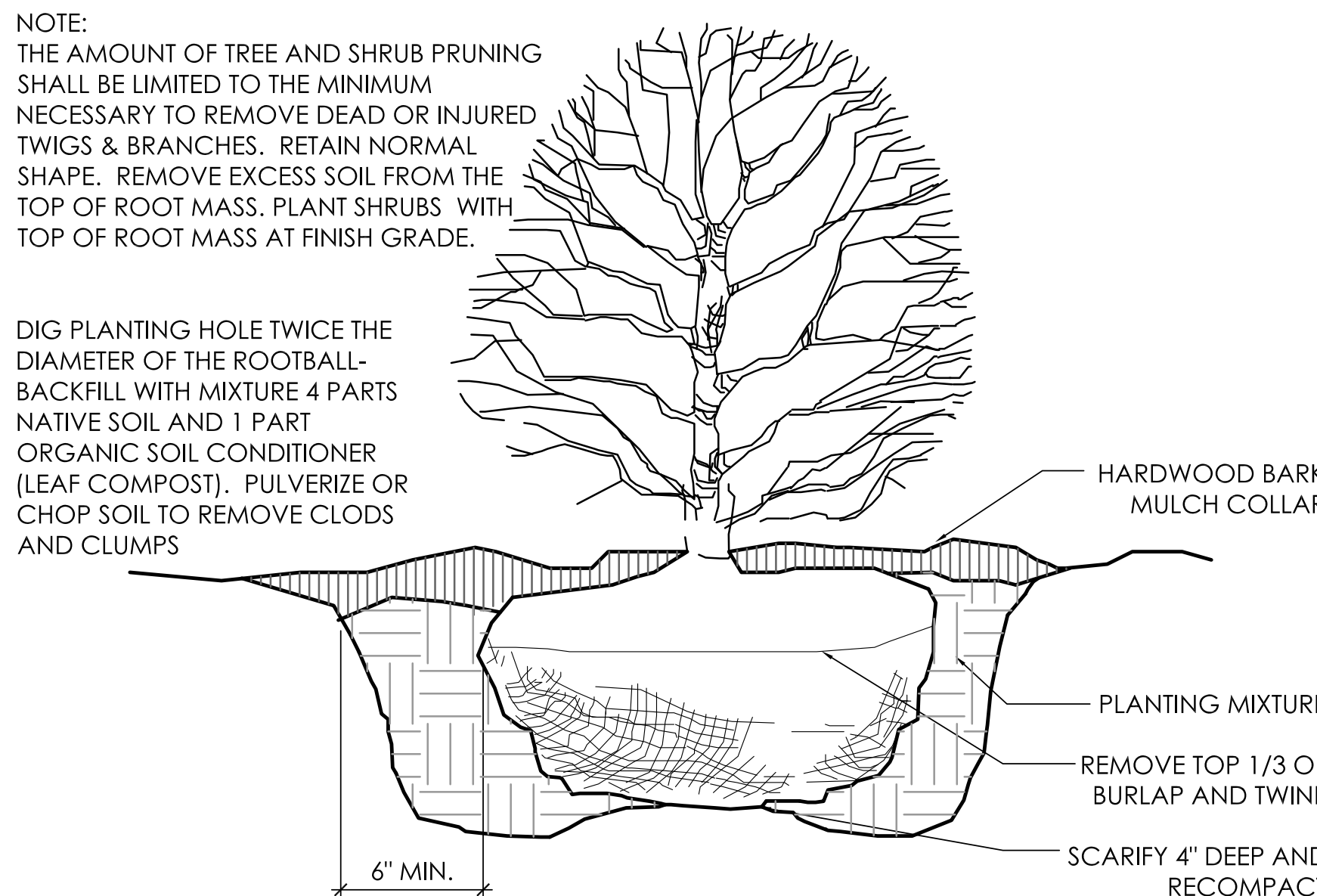
1 DECIDUOUS TREE  
N.T.S.

01-1001



2 EVERGREEN TREE UNDER 7' HGT.  
N.T.S.

01-1100



3 SHRUB PLANTING DETAIL  
N.T.S.

01-1300

REVISIONS	

LANDSCAPE  
DETAILS

SPECTRUM POWELL II  
PREPARED FOR  
ADVANCED CIVIL DESIGN  
422 BEECHER ROAD  
GAHANNA, OH 43230

Faris Planning & Design

LAND PLANNING LANDSCAPE ARCHITECTURE  
243 N. 5th Street  
P (614) 487-1964  
Suite 401  
Columbus, OH 43215  
www.farisplanninganddesign.com

DATE	6/24/15
PROJECT	14075
SHEET	

D-1