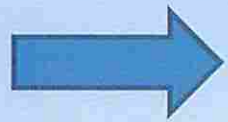


An aerial photograph of a suburban area in Powell, Ohio. The street network is overlaid on the map, with most streets highlighted in yellow and some in orange. The text is centered over the map.

City of Powell Annual Street Maintenance & Repair Program 2015



Street M&R Program

Main considerations in determining the program:

Pavement Condition
Rating (PCR)

Budgetary
considerations

Street priority
(hierarchy) – Local?
Local Collector?
Collector? Arterial?

The “Big Picture”
and what makes
sense

PAVEMENT CONDITION RATING SYSTEM



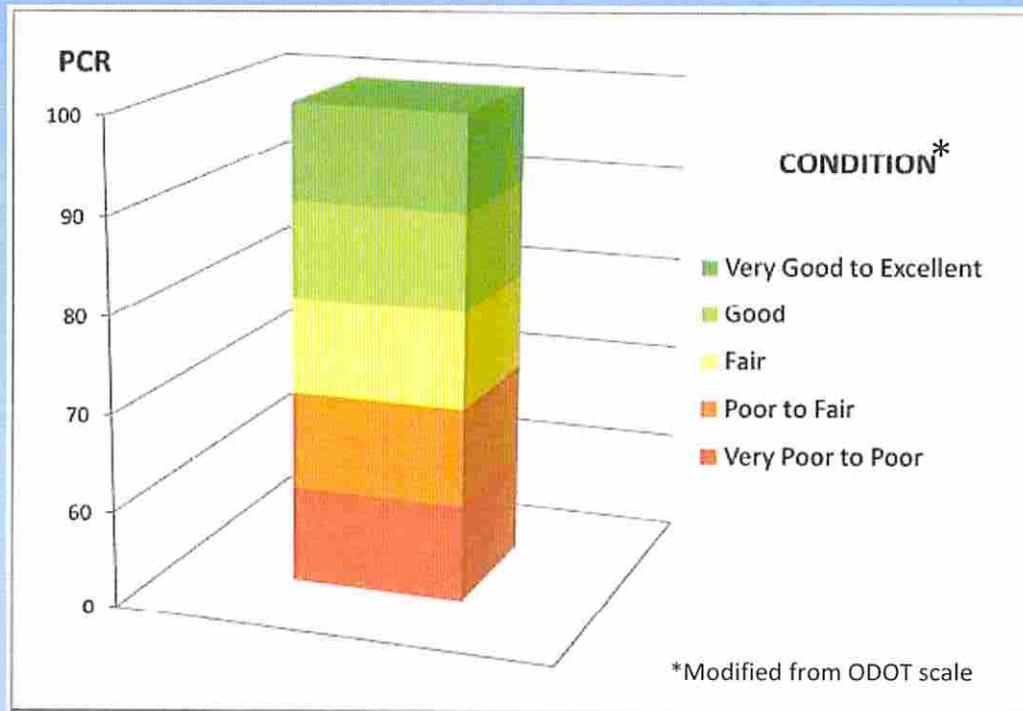
Prepared by

The Ohio Department of Transportation
Office of Pavement Engineering
1980 West Broad Street
Columbus, OH 43223

April 2006

There are many rating systems available, however; the City has adopted a modified ODOT *"Pavement Condition Rating System"*.

The ODOT PCR System is a "snapshot in time" ... it is not a forecaster.



City staff has adopted the scale:

| | |
|--------|--------------------------|
| 90-100 | = Very Good to Excellent |
| 80-90 | = Good |
| 70-80 | = Fair |
| 60-70 | = Poor to Fair |
| 0-60 | = Very Poor to Poor |

What does a street *look* like with a certain PCR?



90.00 (Very Good to Excellent)

What does a street *look* like with a certain PCR?



85.00 (Good)

What does a street *look* like with a certain PCR?



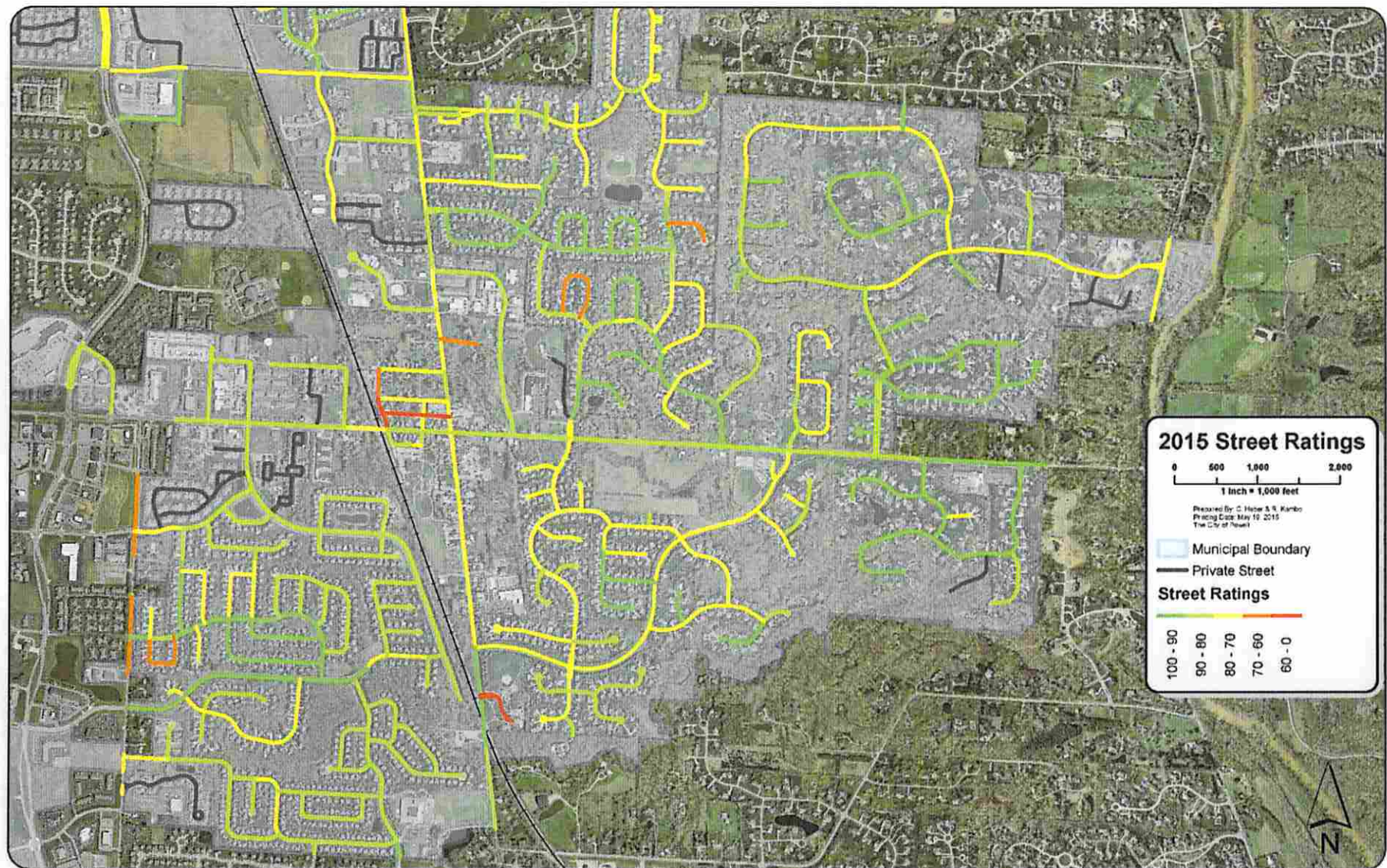
80.00 (Good)

What does a street *look* like with a certain PCR?

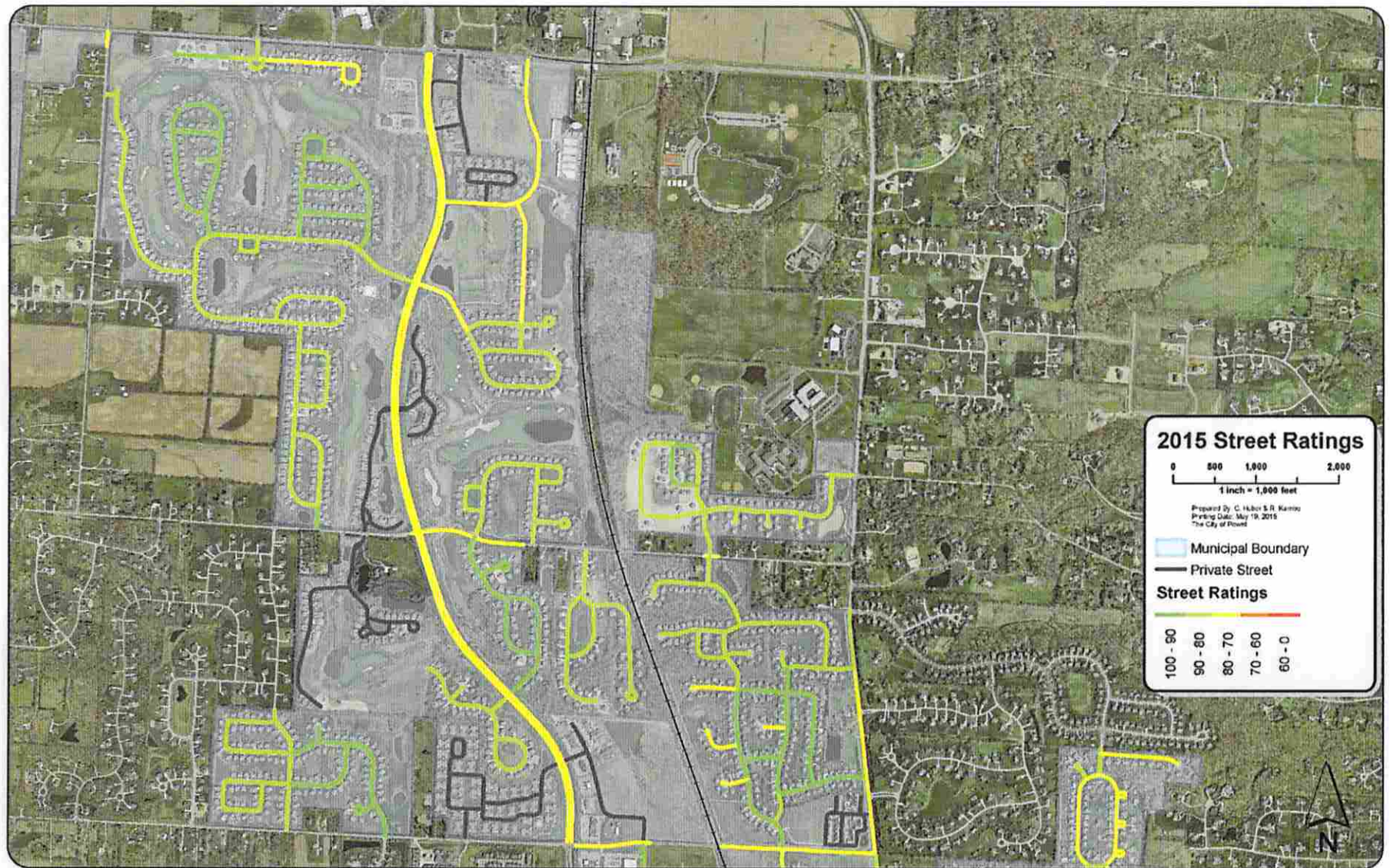


71.35 (Fair)

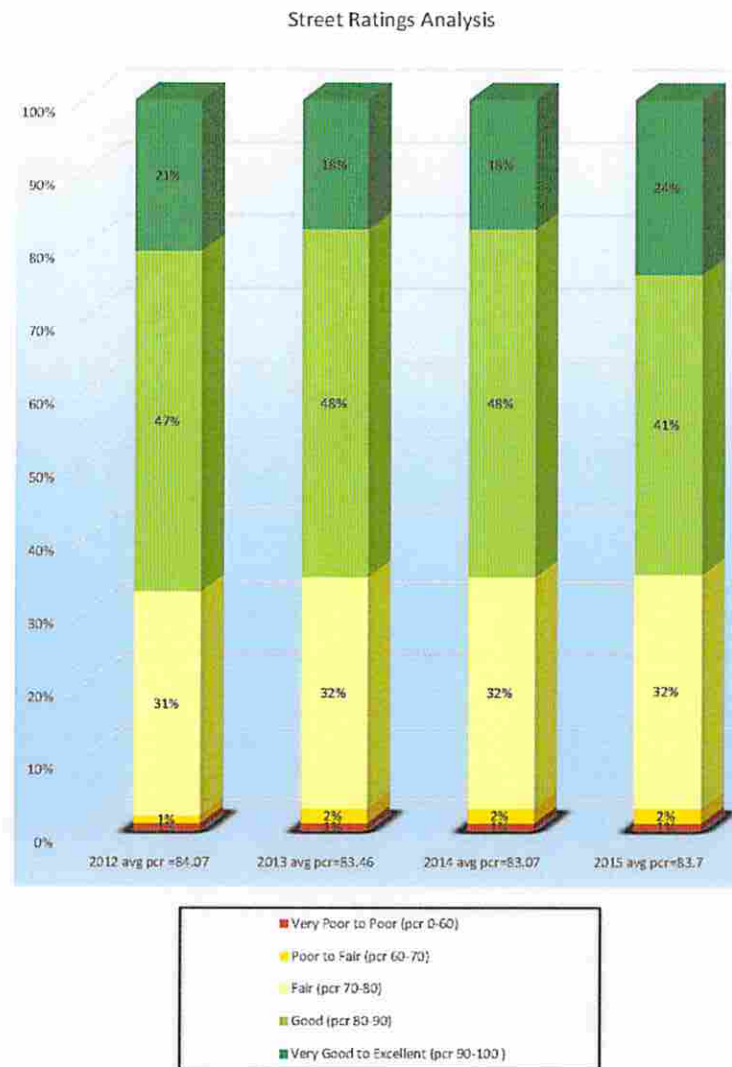
How did our streets rate this year?



How did our streets rate this year?



Summary of street ratings



Street M&R Program

Types of Maintenance & Repairs

- Mill, SAMI & Overlay (Streets)
- Intersection Reconstruction (ADA ramps/curbs/walks)
- Curb & Gutter Replacement
- Pedestrian Pathway Replacement
- Crack Seal
- Surry Seal
- Pavement marking

Proposed 2015 Street M&R Program

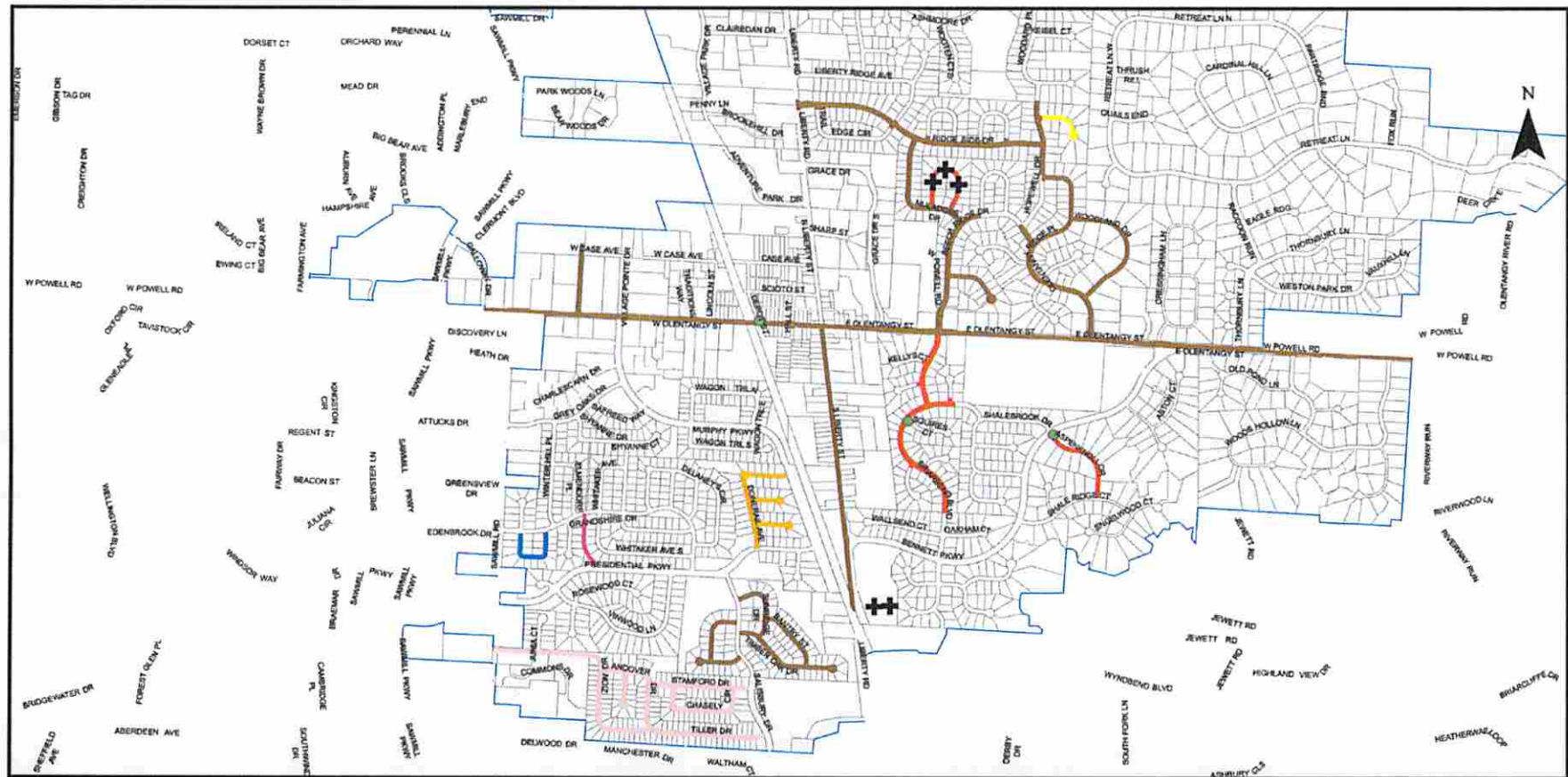


Exhibit A-1 2015 Street Maintenance & Repair Program

See Exhibit A-2 for
other area of program

Work locations as shown on this exhibit are approximate; exact work limits and locations shall be marked and located in field in coordination with City Engineer, prior to construction.

1 inch = 1,150 feet

- 2015 Street Program**

| Legend | |
|---|---|
|  | Slurry Seal - Base Bid |
|  | Mill/SAMI/Overlay - Base Bid |
|  | Slurry Seal - Alternate 2 |
|  | Crack seal - Base Bid |
|  | Mill/SAMI/Overlay - Alternate 3 |
|  | Mill/SAMI/Overlay - Alternate 4 |
|  | Mill/SAMI/Overlay - Alternate 5 |
|  | 2015 Intersection Improvements - see exhibits |
|  | Asphalt Pathway - Alternate 1 |
|  | Pavement Repair and or Pavement Relief Joints |

Proposed 2014 Street M&R Program

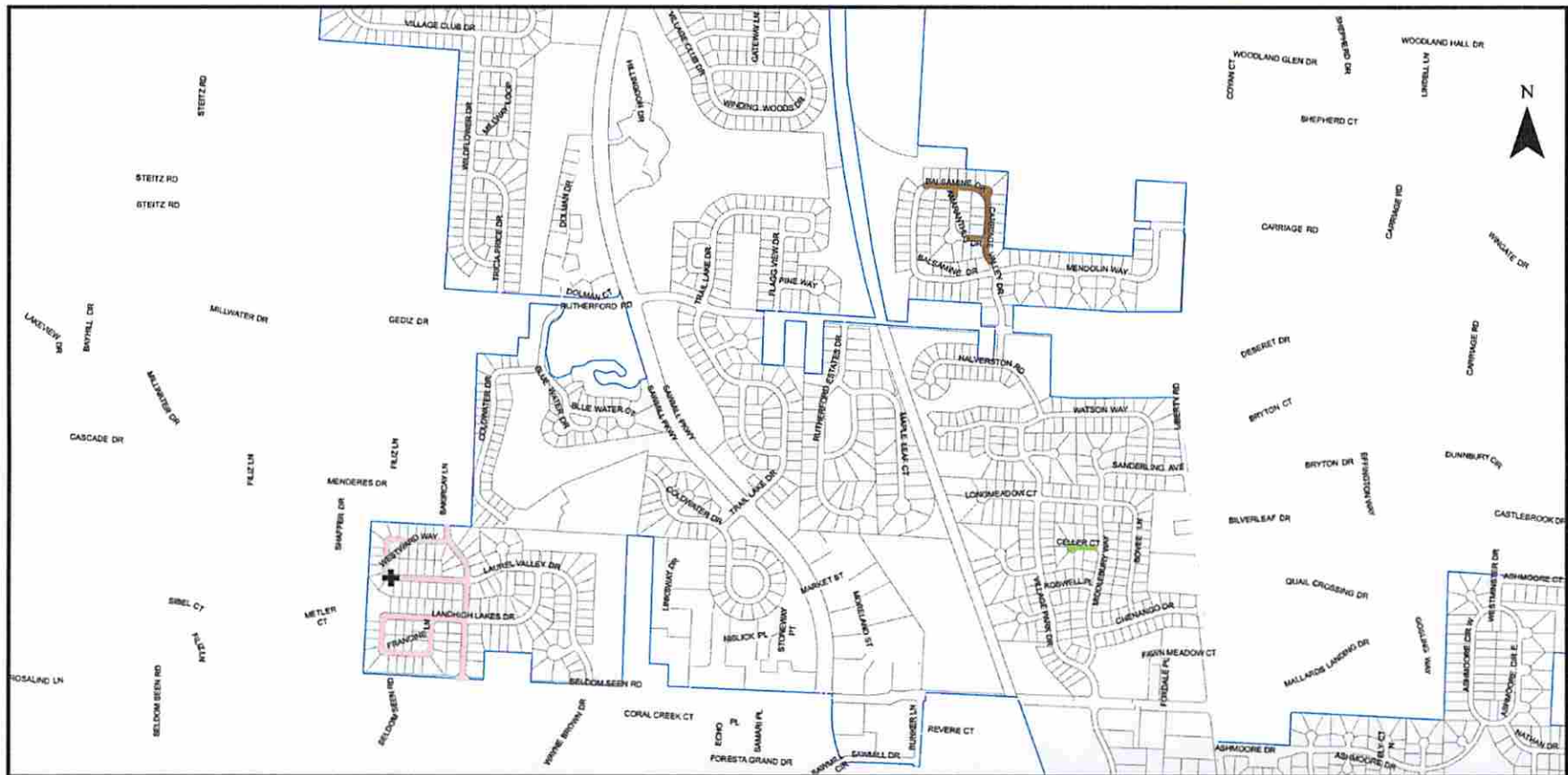


Exhibit A-2

2015 Street Maintenance & Repair Program

See Exhibit A-1 for
other area of program

Work locations as shown on this exhibit
are approximate; exact work limits and
locations shall be marked and located
in field in coordination with City Engineer,
prior to construction.

1 inch = 900 feet



Proposed Street M&R Program

Engineer's Construction Cost Estimate

BASE CONTRACT:

| | |
|--|----------------------|
| Mill/SAMI/Overlay & Curb Replacement (<i>Streets</i>)..... | \$ 300,122 |
| Curb And Gutter Replacement..... | \$ 27,015 |
| Intersection Reconstruction (<i>ADA Ramps/Walks/Pathways/Curbs</i>)..... | \$ 8,120 |
| Crack Seal (<i>Streets</i>)..... | \$ 70,815 |
| Pavement Repair(cut out)..... | \$ 49,644 |
| Slurry Seal..... | \$ 79,099 |
| Pavement Marking | \$ 12,122 |
| Traffic Maintenance..... | \$ 20,000 |
| Sub-Total..... | \$ 566,937 |
| Contingency (10%)..... | \$ 56,693.70 |
| TOTAL..... | \$ 623,630.70 |
| <i>Right In-Right Out (Pork Chop –Depot St.).....</i> | <i>\$ 23,140</i> |

ALTERNATES (includes 10% contingency):

Alternates:

| | |
|--|-----------|
| Alt.1 - <i>Pedestrian Pathway (Grandshire between Grandshire Dr & Presidential Pkwy)</i> | \$ 38,386 |
| Alt. 2 – <i>Slurry Seal (Donerail Ave, Gainsway Ct, Hartsfield Ct. (Grandshire Section 5))</i> | \$ 19,907 |
| Alt. 3 - <i>Shelby Ave. - Mill/SAMI/Overlay (Grandshire)</i> | \$ 44,629 |
| Alt. 4 – <i>Celler Ct. - Mill/SAMI/Overlay (Powell Place)</i> | \$ 19,079 |
| Alt. 5 – <i>Hopewell Ct. - Mill/SAMI/Overlay (Olentangy Ridge)</i> | \$ 38,804 |

* = 2015 Budgeted amount is up to \$620,360



Anticipated Schedule

**Advertise &
Bid – Early
June**

**Award
Contract –
Late June**

**Begin
Construction
– July**

**Complete
Construction
– October**