



April 8, 2015

Elite Land Title  
Mr. Robert Corwin  
Vice President  
3755 Attucks Drive  
Powell, Ohio 43065

**Re: New Office Building at 75 Lincoln Street, Powell OH  
Parking Lot Design - Handicap Access Summary**

Dear Mr. Corwin:

Per your request, we have prepared a letter to summarize why an additional storm structure was added to accommodate a handicap parking spot directly at the new building's entrance. The parking lot is serving as a detention area to comply with storm water management regulations for the additional hard surface area added to the property. To prevent storm water from potentially entering the building due to how close the parking spot will be to the building, we added an additional storm structure.

The additional storm structure could be removed should the handicap space be moved a few spots from the where it is currently shown. Please contact me at (614) 306-6374 for any questions or if clarifications are required.

Respectfully Submitted,  
**OSBORN ENGINEERING**

By: \_\_\_\_\_  
Bryan Lundgren, P.E.  
Associate Director

cc: File



March 21, 2015



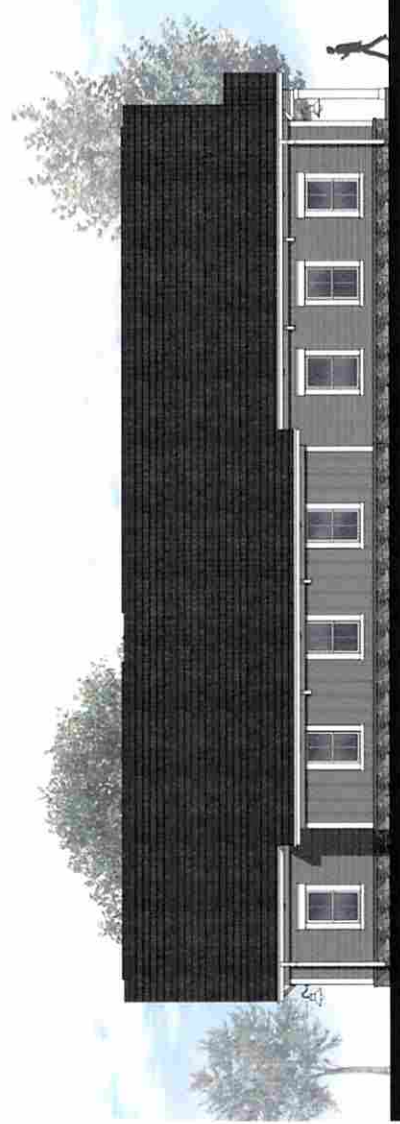
East Elevation  
Scale: 3/16" = 1'-0"



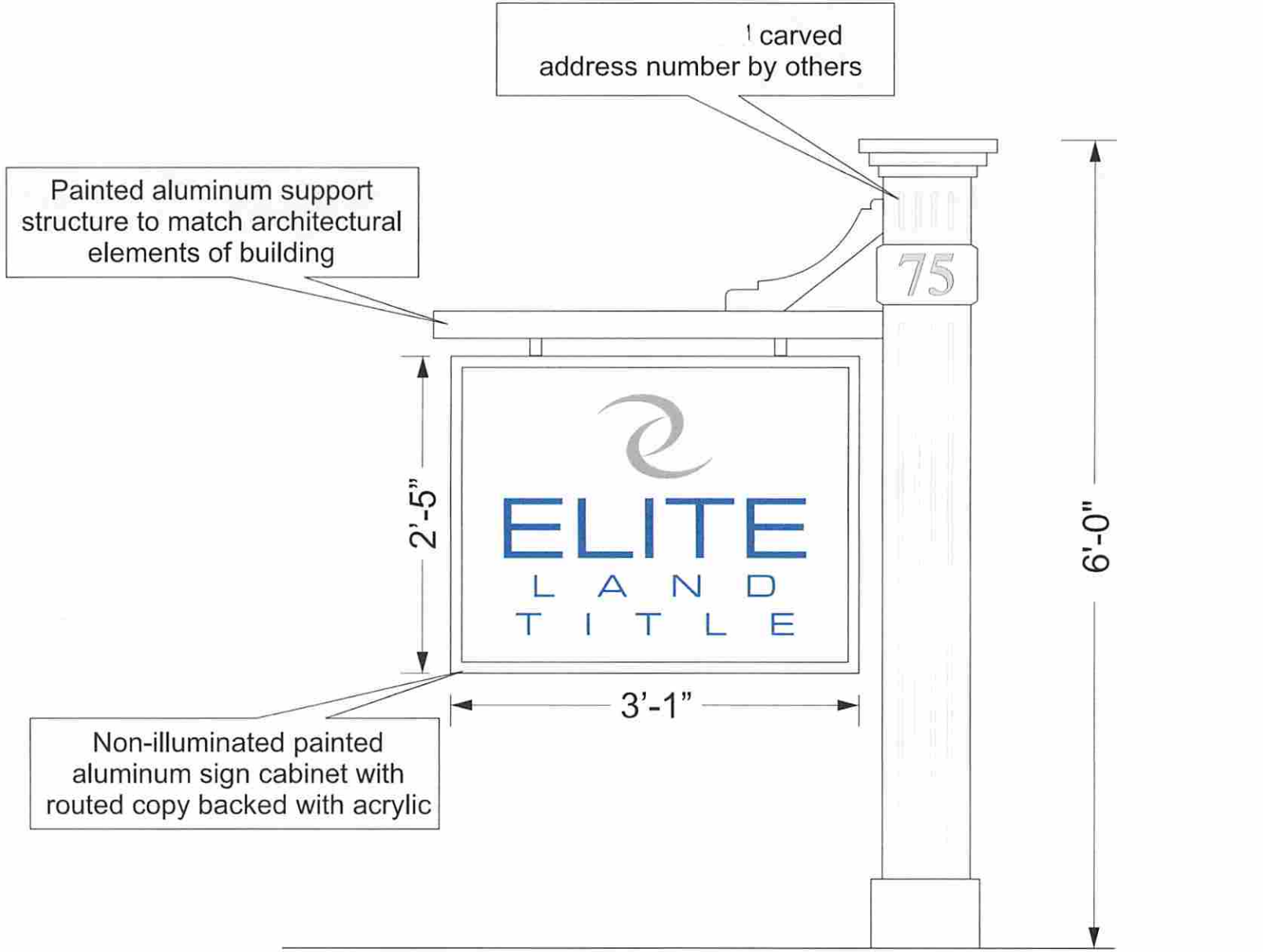
North Elevation  
Scale: 3/16" = 1'-0"



West Elevation  
Scale: 3/16" = 1'-0"



South Elevation  
Scale: 3/16" = 1'-0"



Exterior illumination by others

- Features Cone Shaped Metal Shade
- Pair this sconce with a variety of post lights from the Seaside Collection for a coordinated landscape
- Ultra Secure Mounting Assembly
- To achieve the appearance of an inner globe as pictured, use this fixture (offered during checkout)
- The base of this light fixture is open, allowing for easy access



Sebring 1 Light Outdoor Flush Mount Ceiling Fixture  
\$97.00

**Product Specifications:**

- Height: 12" (measured from bottom of shade or bulb to highest point)
- Width: 8" (measured from left most to right most point on fixture)
- Extension: 9" (measured from mounting surface to furthest point)
- Light Source: 120 V Compact Fluorescent, Medium (E26) base
- Number of Bulbs: 1
- Light Direction: Down Lighting
- Power Usage: 100 watts (at up to 100 watts per bulb)
- Location Rating: Wet Location

**Bulb Compatibility:**

- **Bulb Base - Medium (E26):** The E26 (Edison 26mm), Medium standard bulb used in 120-Volt applications in North America. This bulb type and is generally interchangeable with E27 bulbs.
- **Compatible Bulb Types:** Nearly all bulb types can be found in this fixture. Options include Incandescent, Fluorescent, LED, Halogen, and CFL.

**About Kichler:**

Kichler has been an industry leader in the lighting industry for nearly 100 years. The products you choose for your home should not only exceed functional needs but also add style and beauty to your spaces into truly inspired settings. Each product and style by Kichler is a result of winning craftsmanship and unmatched quality. And with a wide variety of ceiling fans, Kichler's collections deliver distinctive beauty throughout your home.



**Additional Information**

- [Installation Sheet](#)
- [Kichler Catalog Page](#)

**Additional Kichler**

- [View Manufacturer](#)
- [Shop All Kichler Products](#)

**Our SKU: Kichler 9022**

This product is listed under the following manufacturer number(s):

- [Kichler 9022BK](#) Black
- [Kichler 9022NI](#) Brushed Nickel
- [Kichler 9022OB](#) Olde Brick
- [Kichler 9022OZ](#) Olde Bronze
- [Kichler 9022WH](#) White

\*Denotes a finish or option that has been discontinued

**Kichler 9022 Reviews**

**Reviews**

[Write a review](#)

**Rating Snapshot**

5 ★	20
4 ★	4

**Average Customer Ratings**

Overall ★★★★★ 4.3

<b>Location Rating</b>	Wet Location
<b>Manufacturer Warranty</b>	1 Year Limited
<b>Material</b>	Aluminum
<b>Motion Sensor</b>	No
<b>Number of Bulbs</b>	1
<b>Photocell</b>	No
<b>Product Weight</b>	1.5
<b>Sconce Type</b>	Barn Light, Gooseneck
<b>Shade</b>	Yes
<b>Shade Color</b>	Black, Bronze, Nickel, Red, White
<b>Shade Material</b>	Metal
<b>Shade Shape</b>	Cone
<b>Style</b>	Industrial
<b>Suggested Room Fit</b>	Outdoor