



ILLUSTRATIVE PLAN

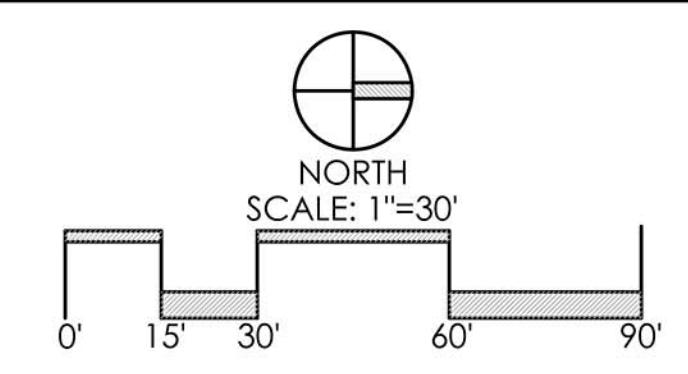
# HARPER'S POINTE

PREPARED FOR ARLINGTON HOMES

DATE: 02.6.15

SITE DATA

TOTAL ACRES	+/- 8.75 ACRES
TOTAL UNITS	48
DENSITY	+/- 5.49 D.U./AC.
TREE PRESERVE / SCENIC / OPEN SPACES	1.98 ACRES (22.6%)

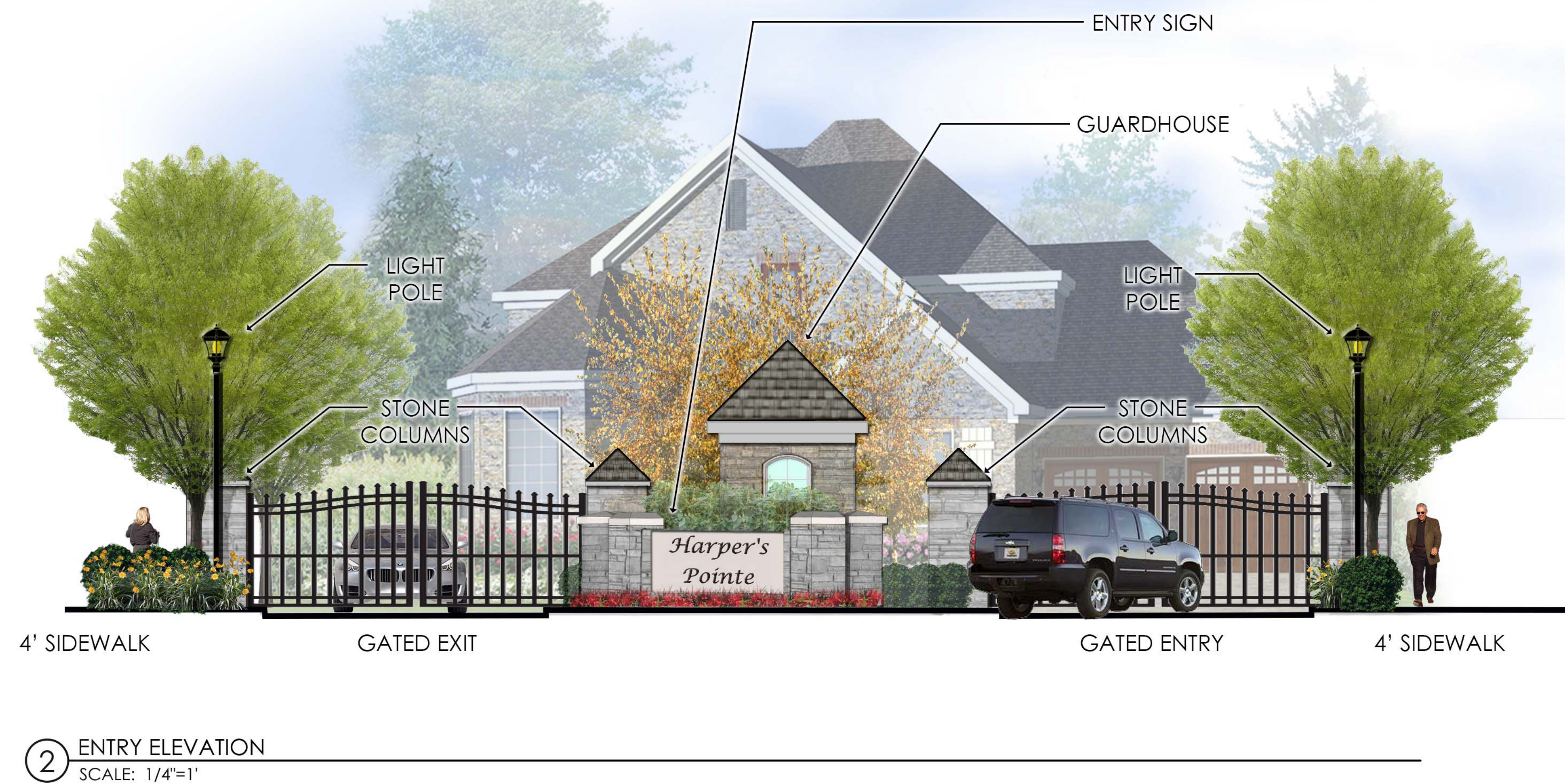


**Faris Planning & Design**

LAND PLANNING      LANDSCAPE ARCHITECTURE

855 Grandview Avenue      Suite 230      Columbus, OH 43215  
p (614) 487-1964      f (614) 487-1975





# ILLUSTRATIVE ENTRY ENLARGEMENT PLAN AND ELEVATION

## HARPER'S POINTE

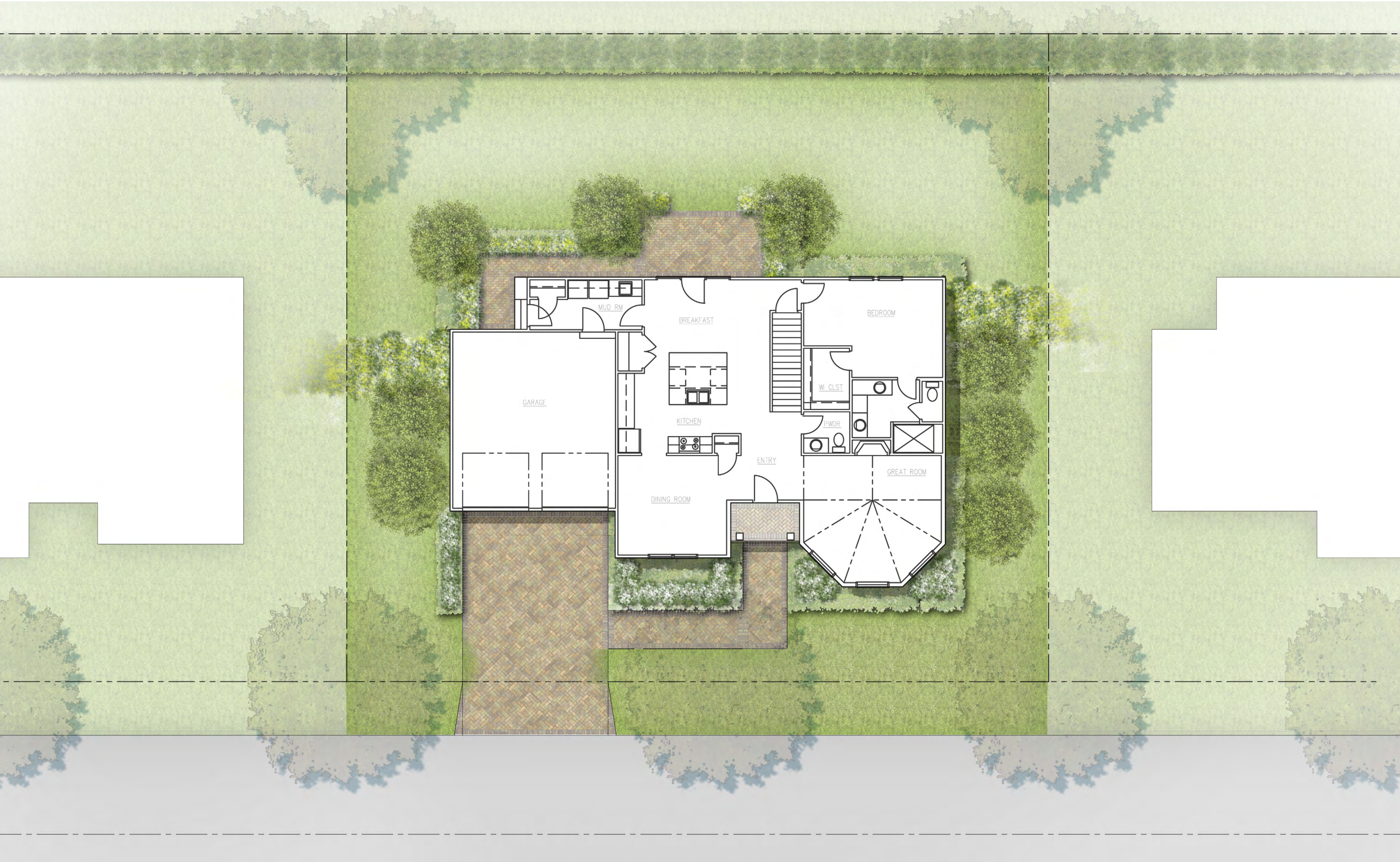
PREPARED FOR ARLINGTON HOMES

DATE: 2.10.2015

Faris Planning & Design

LAND PLANNING LANDSCAPE ARCHITECTURE  
243 N. 5th Street Suite 401 Columbus, OH 43215  
p (614) 487-1964 www.farisplanninganddesign.com





Harpers Point, Home Type A, Plan





Harpers Point, Home Type A, Rendering





Harpers Point, Home Type B, Rendering



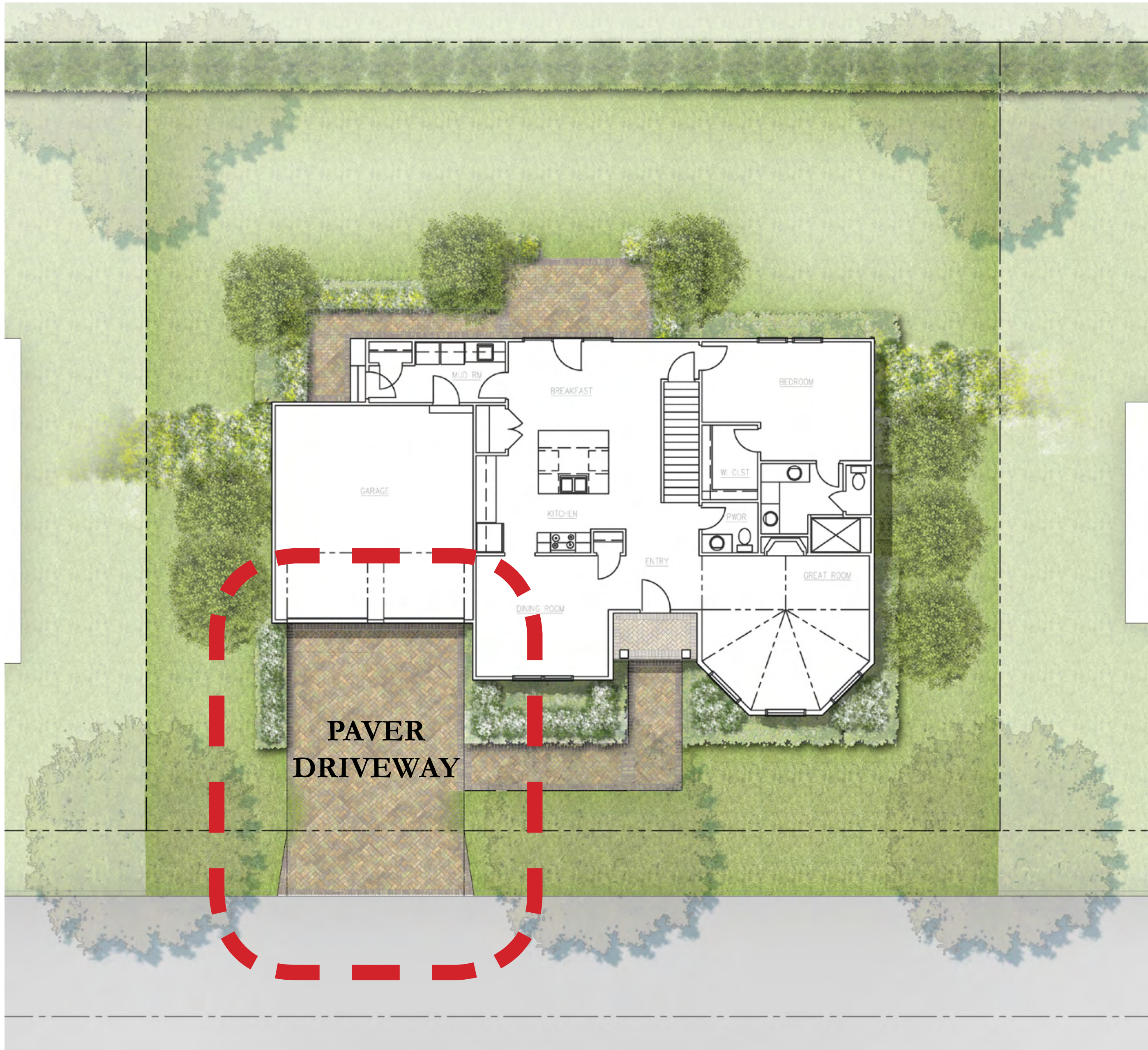


Harpers Point, Home Type C, Rendering





**PAVER DRIVEWAYS TO MATCH ARCHITECTURE  
(TYPICAL THROUGHOUT DEVELOPMENT)**

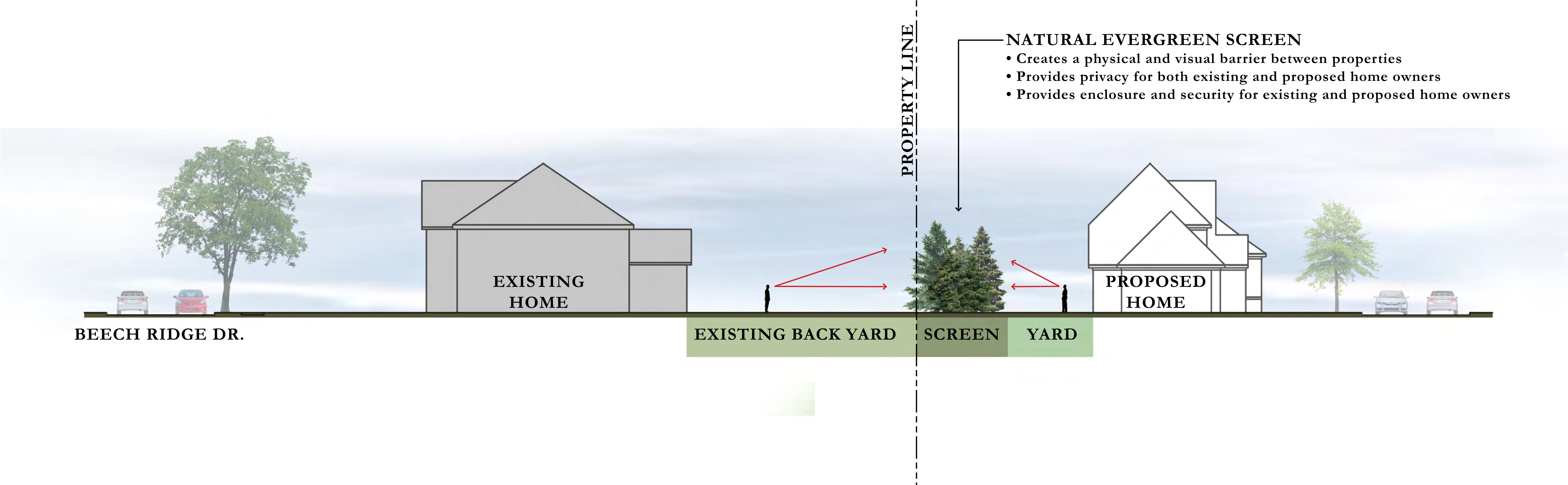


**Typical Unit Plan** (NOTE: landscape plan will vary based on home owner preference)



**PAVER DRIVEWAYS UNIFY THE DESIGN AND  
ESTABLISH A HIGH QUALITY STANDARD WHILE  
APPROACHING AND ENTERING THE HOMES**





Harpers Point, Section: Vegetated Screen at Property Line





Harpers Point, Streetscape Rendering





Harpers Point, Streetscape - Beech Ridge Dr. Streetscape



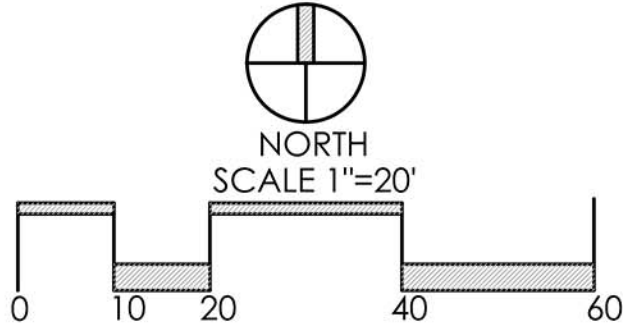


ILLUSTRATIVE PLAN - PUBLIC R.O.W. OPTION

HARPER'S POINTE

PREPARED FOR ARLINGTON HOMES

DATE: 3/4/15



Faris Planning & Design

LAND PLANNING LANDSCAPE ARCHITECTURE  
243 N. 5th Street Suite 401 Columbus, OH 43215  
p (614) 487-1964 www.farisplanninganddesign.com