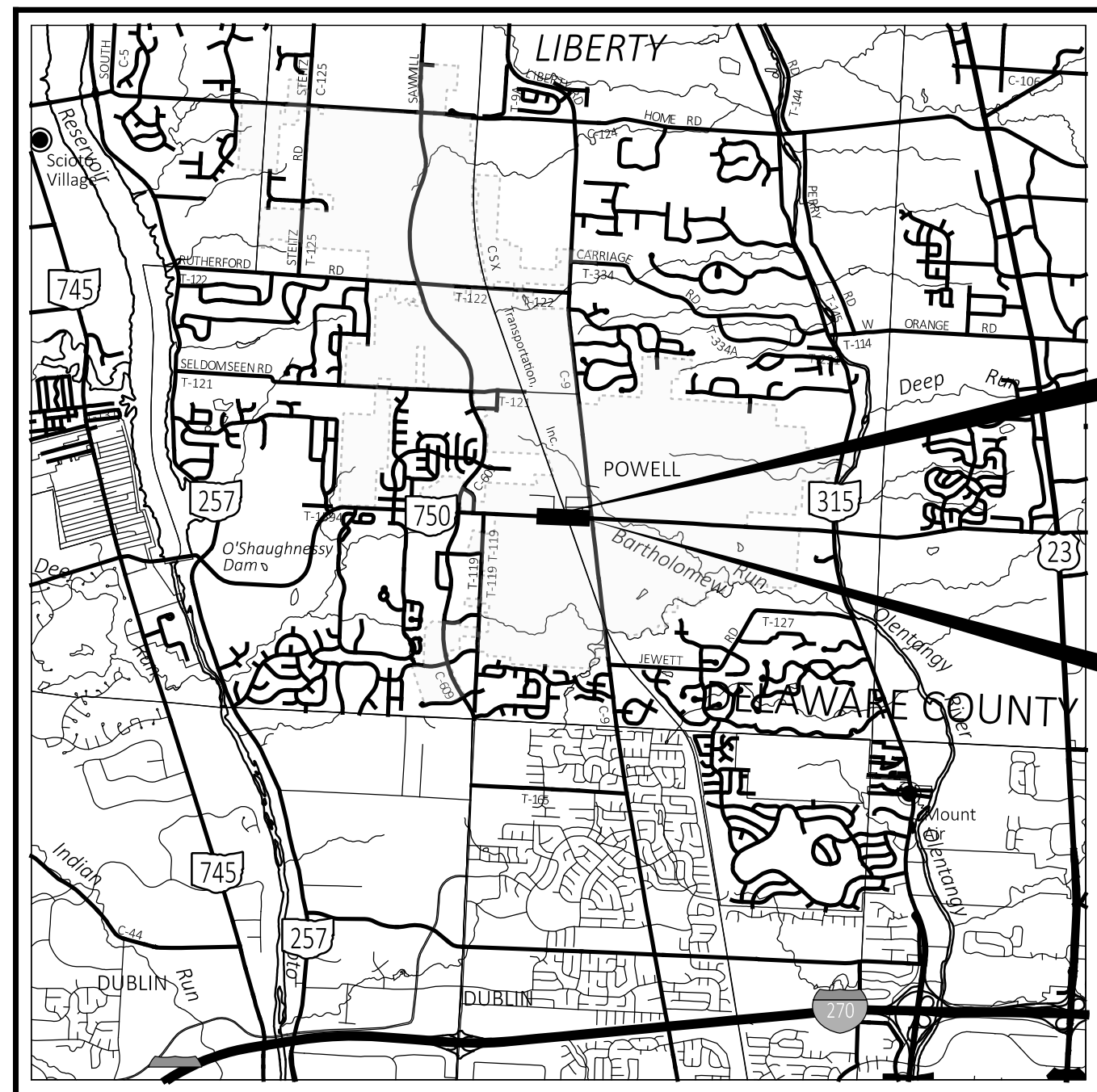


STATE OF OHIO DEPARTMENT OF TRANSPORTATION

DEL-750-02.57 PEDESTRIAN CROSSINGS

CITY OF POWELL
DELAWARE COUNTY



LOCATION MAP

LATITUDE: 40°09'30" LONGITUDE: -83°04'40"



PORTION TO BE IMPROVED	=====
INTERSTATE HIGHWAY	=====
FEDERAL ROUTES	=====
STATE ROUTES	=====
COUNTY & TOWNSHIP ROADS	=====
OTHER ROADS	=====

DESIGN DESIGNATION

CURRENT ADT (2025)	15,107
DESIGN YEAR ADT (2045)	18,433
DESIGN HOURLY VOLUME (2045)	1,591
DIRECTIONAL DISTRIBUTION	53%
TRUCKS (24 HOUR B&C)	3%
DESIGN SPEED	25 MPH
LEGAL SPEED	25 MPH
DESIGN FUNCTIONAL CLASSIFICATION:	
03 - PRINCIPAL ARTERIAL	
NHS PROJECT	NO

DESIGN EXCEPTIONS

NONE REQUIRED

ADA DESIGN WAIVERS

NONE REQUIRED

UNDERGROUND UTILITIES
Contact Two Working Days
Before You Dig

OHIO811.org
Before You Dig

OHIO811, 8-1-1, or 1-800-362-2764
(Non members must be called directly)

PLAN PREPARED BY:
STRAND ASSOCIATES, INC.
500 NEIL AVE. SUITE #110
COLUMBUS, OH 43215

INDEX OF SHEETS:

TITLE SHEET	P.1
SCHEMATIC PLAN	P.2
GENERAL NOTES	P.3-P.4
MAINTENANCE OF TRAFFIC NOTES	P.5
PLAN SHEETS	P.6-P.8
INTERSECTION DETAILS	P.9-P.10
PAVEMENT DETAILS	P.11

STANDARD CONSTRUCTION DRAWINGS						SUPPLEMENTAL SPECIFICATIONS		SPECIAL PROVISIONS	
BP-2.1	1/21/22	CB-3A	7/19/24	MT-95.61	4/19/19	800-2023	7/19/24		
BP-2.2	1/15/21			MT-97.10	4/19/19	832	7/19/24		
BP-3.1	1/19/24	DM-1.1	7/17/20	MT-101.90	7/17/20				
BP-5.1	7/15/22	DM-4.3	1/15/16	MT-105.10	1/17/20				
BP-7.1	7/19/24	DM-4.4	1/15/16	MT-110.10	7/19/13				
				TC-22.20	1/17/14				
				TC-41.20	10/18/13				
				TC-42.20	10/18/13				
				TC-52.10	10/18/13				
				TC-52.20	1/15/21				
				TC-71.10	4/21/23				
				TC-74.10	7/21/23				
				TC-87.10	7/21/23				

FEDERAL PROJECT NUMBER

E240(784)

RAILROAD INVOLVEMENT

NONE

PROJECT DESCRIPTION

INSTALLATION OF PEDESTRIAN IMPROVEMENTS ALONG S.R. 750 AT THREE INTERSECTIONS THAT INCLUDE CURB RAMPS, BUMPOUTS, CROSSWALKS, STRIPING, AND RRFB ASSEMBLIES. PROJECT INCLUDES MINOR GRADING AND STORM SEWER MODIFICATIONS.

EARTH DISTURBED AREAS

PROJECT EARTH DISTURBED AREA:	0.03 ACRES
ESTIMATED CONTRACTOR EARTH DISTURBED AREA:	0.0 ACRES
NOTICE OF INTENT EARTH DISTURBED AREA:	N/A (NOI NOT REQUIRED)

TRAFFIC NOT REROUTED

I HEREBY APPROVE THESE PLANS AND DECLARE THAT THE MAKING OF THIS IMPROVEMENT WILL NOT REQUIRE THE CLOSING TO TRAFFIC OF THE HIGHWAY AND THAT PROVISIONS FOR THE MAINTENANCE AND SAFETY OF TRAFFIC WILL BE AS SET FORTH ON THE PLANS AND ESTIMATES.

2023 SPECIFICATIONS

THE STANDARD SPECIFICATIONS OF THE STATE OF OHIO, DEPARTMENT OF TRANSPORTATION, INCLUDING SUPPLEMENTAL SPECIFICATIONS LISTED IN THE PLANS AND CHANGES LISTED IN THE PROPOSAL SHALL GOVERN THIS IMPROVEMENT.

District Deputy Director

Director, Department of Transportation

TITLE SHEET

DESIGN AGENCY



DESIGNER
ATW

REVIEWER
SLG 11/13/24

PROJECT ID
121063

SHEET TOTAL
P.1 11

DEL-750-02.57

MODEL: Sheet PAPER: 34x22 (in.) DATE: 11/15/2024 TIME: 11:07:26 AM USER: Allisonw S:\CIN\3500--3999\027\Drawings\CAD\121063\400-Engineering\Roadway\Sheets\121063_G1001.dgn

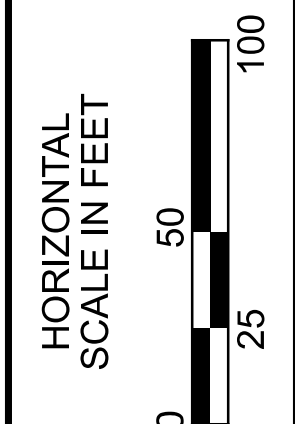
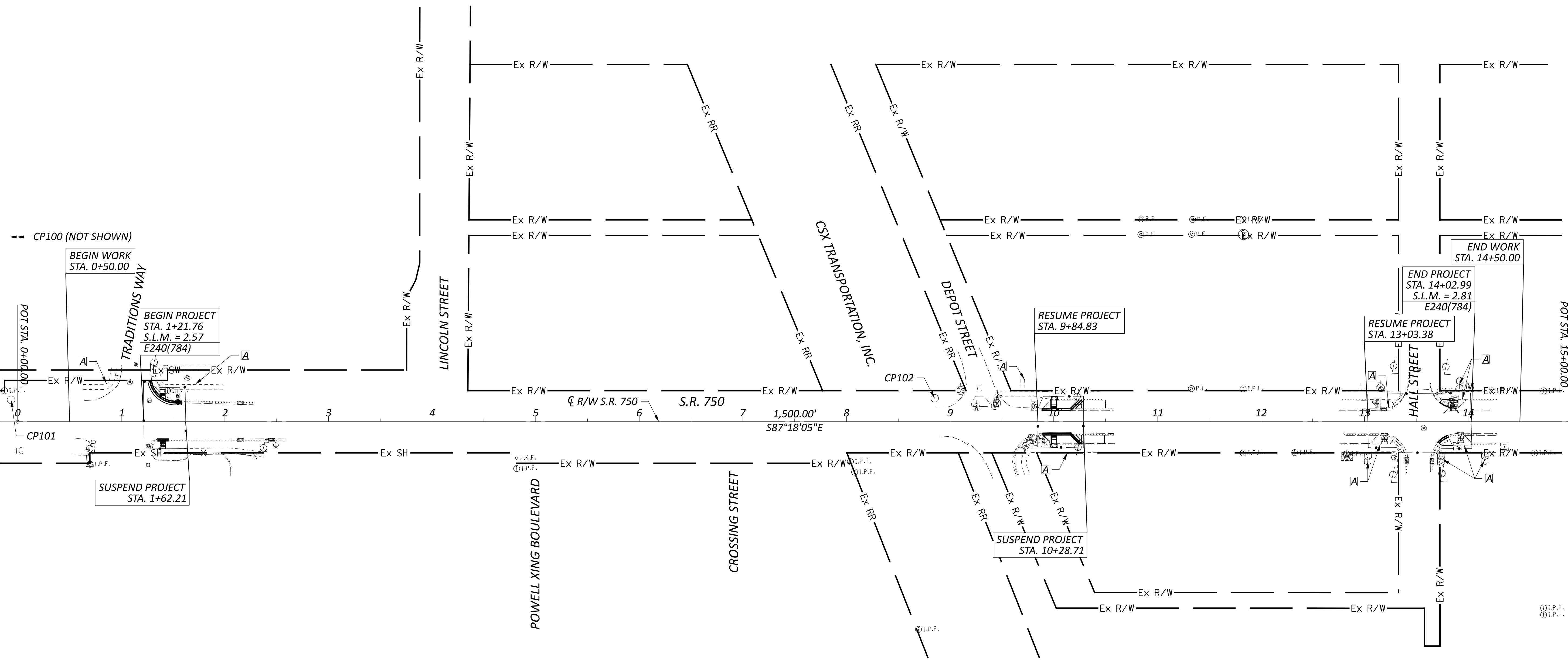
STA. 0+00.00
 N: 179622.414'
 E: 1805977.514'

STA. 15+00.00
 N: 179551.790'
 E: 1807475.851'

PROJECT CONTROL TABLE				
POINT	NORTHING	EASTING	ELEVATION	DESCRIPTION
CP100	179665.616	1805466.876	922.303	IRON PIN WITH CAP
CP101	179643.899	1805972.138	919.815	IRON PIN WITH CAP
CP102	179603.417	1806862.777	920.928	IRON PIN WITH CAP

LEGEND

▣ LANDSCAPED AREA



SCHEMATIC PLAN

DESIGN AGENCY	
DESIGNER	
ATW	
REVIEWER	
SLG 11/13/24	
PROJECT ID	
121063	
SHEET	TOTAL
P.2	11

UTILITIES

LISTED BELOW ARE ALL UTILITIES LOCATED WITHIN THE PROJECT CONSTRUCTION LIMITS TOGETHER WITH THEIR RESPECTIVE OWNERS:

GAS COLUMBIA GAS OF OHIO 3550 JOHNNY APPLESEED CT, COLUMBUS, OH 43231 (614) 370-1906 ROB CALDWELL	WATER DEL-CO WATER 6773 OLENTANGY RIVER RD DELAWARE, OH 43015 (740) 201-0130 DAVE WOLF
---	--

ELECTRIC PIONEER ENERGY MANAGEMENT 481 SCHROCK RD COLUMBUS, OH 43229 (614) 442-7100 TOM BAILEY	ELECTRIC AEP OHIO 777 HOPEWELL DR HEATH, OH 43056 (740) 348-5322 PAUL PAXTON
--	--

COMMUNICATIONS FRONTIER COMMUNICATION (VERIZON) 1300 COLUMBUS SANDUSKY RD N MARION, OH 43302 (740) 383-0551 ROBERT CHANDLER	COMMUNICATIONS CENTURYLINK 441 WEST BROAD ST PATASKALA, OH 43062 (740) 927-8282 JEFF SCHOONOVER
--	---

COMMUNICATIONS AT&T - OHIO 111 NORTH FOURTH ST COLUMBUS, OH 43215 (614) 223-7162 GUY SPIDEL	COMMUNICATIONS CHARTER COMMUNICATIONS 3760 INTERCHANGE DR COLUMBUS, OH 43204 (614) 255-6349 JOEY VLOCK
---	--

SEWER
DELAWARE COUNTY REGIONAL
SEWER DISTRICT
1610 STATE ROUTE 521
DELAWARE, OH 43015
(740) 833-2100
KELLY THIEL

THE LOCATION OF THE UNDERGROUND UTILITIES SHOWN ON THE PLANS ARE AS OBTAINED FROM THE OWNERS AS REQUIRED BY SECTION 153.64 O.R.C.

CONSTRUCTION NOISE

ACTIVITIES AND LAND USE ADJACENT TO THIS PROJECT MAY BE AFFECTED BY CONSTRUCTION NOISE. IN ORDER TO MINIMIZE ANY ADVERSE CONSTRUCTION NOISE IMPACTS, DO NOT OPERATE POWER-OPERATED CONSTRUCTION-TYPE DEVICES BETWEEN THE HOURS OF 8 PM AND 7AM. IN ADDITION, DO NOT OPERATE AT ANY TIME ANY DEVICE IN SUCH A MANNER THAT THE NOISE CREATED SUBSTANTIALLY EXCEEDS THE NOISE CUSTOMARILY AND NECESSARILY ATTENDANT TO THE REASONABLE AND EFFICIENT PERFORMANCE OF SUCH EQUIPMENT.

WORK LIMITS

THE WORK LIMITS SHOWN ON THESE PLANS ARE FOR PHYSICAL CONSTRUCTION ONLY. PROVIDE THE INSTALLATION AND OPERATION OF ALL WORK ZONE TRAFFIC CONTROL AND WORK ZONE TRAFFIC CONTROL DEVICES REQUIRED BY THESE PLANS WHETHER INSIDE OR OUTSIDE THESE WORK LIMITS.

SURVEYING PARAMETERS

PRIMARY PROJECT CONTROL MONUMENTS GOVERN ALL POSITIONING ON ODOT PROJECTS. SEE SHEET 2 OF THE PLANS FOR A TABLE CONTAINING PROJECT CONTROL INFORMATION.

USE THE FOLLOWING PROJECT CONTROL, VERTICAL POSITIONING, AND HORIZONTAL POSITIONING PARAMETERS FOR ALL SURVEYING:

PROJECT CONTROL

POSITIONING METHOD: ODOT VRS - DERIVED GNSS OBSERVATION
MONUMENT TYPE: B

VERTICAL POSITIONING

ORTHOMETRIC HEIGHT DATUM: NAVD88
GEOID: 12B

HORIZONTAL POSITIONING

REFERENCE FRAME: NAD83 (2011)
ELLIPSOID: GRS80
MAP PROJECTION: LAMBERT CONFORMAL CONIC 2 STANDARD PARALLEL
COORDINATE SYSTEM: OHIO STATE PLANE, NORTH ZONE
PROJECT ADJUSTMENT FACTOR: 0.99997463
ORIGIN OF COORDINATE SYSTEM: 0,0

USE THE POSITIONING METHODS AND MONUMENT TYPE USED IN THE ORIGINAL SURVEY TO RESTORE ALL MONUMENTS RELATED TO PRIMARY PROJECT CONTROL THAT ARE DAMAGED OR DESTROYED BY CONSTRUCTION ACTIVITIES. RESTORE THE DAMAGED OR DESTROYED MONUMENTS IN ACCORDANCE WITH CMS 623.

UNITS ARE IN U.S. SURVEY FEET.

CLEARING AND GRUBBING

REMOVE ALL TREES AND STUMPS SPECIFICALLY MARKED FOR REMOVAL WITHIN THE CONSTRUCTION LIMITS UNDER THE LUMP SUM BID FOR ITEM 201, CLEARING AND GRUBBING. THE FOLLOWING IS AN APPROXIMATE ESTIMATE OF THE NUMBER OF TREES AND STUMPS TO BE REMOVED.

SIZES	NO. TREES	NO. STUMPS	TOTAL
6"	2	0	2

SAWCUT TO SOUND PAVEMENT

THE EXISTING PAVEMENT EDGES SHALL BE SAW CUT TO LOCATE A SOUND PAVEMENT EDGE. PAYMENT FOR THIS WORK SHALL BE INCLUDED IN ITEM 202 - PAVEMENT REMOVED.

SEEDING AND MULCHING

THE FOLLOWING QUANTITIES ARE PROVIDED TO PROMOTE GROWTH AND CARE OF PERMANENT SEEDED AREAS:

- 659, TOPSOIL _____ CU. YD.
- 659, SEEDING AND MULCHING _____ SQ. YD.
- 659, REPAIR SEEDING AND MULCHING _____ SQ. YD.
- 659, INTER-SEEDING _____ SQ. YD.
- 659, COMMERCIAL FERTILIZER _____ TON
- 659, LIME _____ ACRES
- 659, WATER _____ M. GAL.

SEEDING AND MULCHING SHALL BE APPLIED TO ALL AREAS OF EXPOSED SOIL BETWEEN THE RIGHT-OF-WAY LINES, AND WITHIN THE CONSTRUCTION LIMITS FOR AREAS OUTSIDE THE RIGHT-OF-WAY LINES COVERED BY WORK AGREEMENT OR SLOPE EASEMENT, EXCEPT AS SHOWN AT HALL STREET. QUANTITY CALCULATIONS FOR SEEDING AND MULCHING ARE BASED ON THESE LIMITS.

PAVER SIDEWALK AND PAVES BORDER

THIS ITEM SHALL INCLUDE ALL LABOR, MATERIALS, AND EQUIPMENT TO INSTALL THE PAVES SIDEWALK AS SHOWN IN THE PLANS. PAVERS SUPPLIED FOR THE SIDEWALK CONSTRUCTION SHALL MATCH MATERIAL, COLOR, AND SHAPE OF THE EXISTING PAVERS. THE FINAL PAVERS WILL BE CHOSEN BY THE ENGINEER AFTER REVIEW OF SAMPLES SUPPLIED BY THE CONTRACTOR. THE PAVERS SHALL NOT BE ORDERED UNTIL APPROVED.

THE CONTRACTOR SHALL PREPARE A SAMPLE PATTERN WITH APPROVED PAVERS TO CONFIRM THE EXACT DIMENSIONS PRIOR TO CONSTRUCTING THE CONCRETE BASE AND WALK.

PAYMENT SHALL INCLUDE ALL ELEMENTS SHOWN ON THE PAVES DETAIL ON THIS SHEET. THE FOLLOWING PAY ITEMS AND QUANTITIES HAVE BEEN INCLUDED FOR THIS WORK:

ITEM 608 - WALKWAY, MISC.: PAVES SIDEWALK	___ SF
ITEM 608 - WALKWAY, MISC.: PAVES BORDER	___ FT

PAVER DETAIL TO BE PROVIDED AT FUTURE SUBMITTAL

ITEM 202 - REMOVAL MISC.: PAVES CURB RAMP REMOVED

CONTRACTOR SHALL REMOVE THE EXISTING PAVES CURB RAMPS INCLUDING CURB AND GUTTER OR CURB, AND DETECTABLE WARNINGS AS SHOWN IN THE DRAWINGS. CONTRACTOR SHALL SAWCUT THE EXISTING PAVERS TO CREATE A CLEAN EDGE. THIS WORK SHALL BE PERFORMED FOR THE COST OF SQUARE FEET OF PAVES CURB RAMP REMOVED.

DESIGN AGENCY



DESIGNER
ATW

REVIEWER
SLG 11/13/24

PROJECT ID
121063

SHEET TOTAL
P.3 | 11

630 SIGNING MISC.: SOLAR-POWERED RECTANGULAR RAPID FLASHING BEACON (RRFB) SIGN ASSEMBLY

THIS WORK SHALL CONSIST OF FURNISHING AND INSTALLING A SOLAR POWERED RECTANGULAR RAPID FLASHING BEACON (RRFB) SIGN ASSEMBLY. THE FLASHING UNIT SHALL BE SOLAR POWERED, PEDESTRIAN ACTIVATED, AND 2-SIDED WITH TWO LED ARRAY BASED YELLOW INDICATIONS ON EACH SIDE. MULTIPLE UNITS SHALL BE WIRELESSLY CONTROLLED AND SYNCHRONIZED. THE UNIT SHALL BE COMPLIANT WITH THE MOST CURRENT OHIO MANUAL OF UNIFORM TRAFFIC CONTROL DEVICES (OMUTCD) AND FHWA INTERIM APPROVAL FOR RRFBs (IA-21).

GENERAL REQUIREMENTS -

EACH RRFB SHALL CONSIST OF TWO RAPIDLY FLASHED RECTANGULAR-SHAPED YELLOW INDICATIONS HAVING LED ARRAY BASED LIGHT SOURCE.

EACH RRFB SHALL BE A COMPLETE ASSEMBLY, CONSISTING OF BUT NOT LIMITED TO, SIGNAGE, SIGN MOUNTING HARDWARE, INDICATIONS AND ELECTRICAL COMPONENTS (WIRING, SOLID-STATE CIRCUIT BOARDS, ETC.).

EACH RRFB SHALL CONTAIN A PEDESTRIAN INDICATION LIGHT VISIBLE BY THE PEDESTRIAN IN THE DIRECTION OF TRAVEL.

FUNCTIONAL REQUIREMENTS -

EACH RRFB SHALL UTILIZE SOLAR POWER.

EACH RRFB SHALL BE ACTIVATED BY ADA COMPLIANT PUSHBUTTONS.

THE RRFB SHALL BE NORMALLY DARK, SHALL INITIATE OPERATION ONLY UPON PEDESTRIAN ACTUATION, AND SHALL CEASE OPERATION AFTER A PREDETERMINED TIME LIMIT (BASED ON OMUTCD PROCEDURES).

EACH REMOTE RRFB SHALL BE WIRELESSLY ACTIVATED.

ALL RRFB LIGHT INDICATIONS SHALL BE WIRELESSLY SYNCHRONIZED (ALL LIGHTS WILL TURN ON WITHIN 120 MSEC AND REMAIN SYNCHRONIZED THROUGHOUT THE DURATION OF THE FLASHING CYCLE).

THE UNIT SHALL BE CAPABLE OF RUNNING 14 DAYS WITHOUT SUNLIGHT.

MATERIALS -

FURNISH A COMPLETE ASSEMBLY, CONSISTING OF BUT NOT LIMITED TO, SIGNAGE, SIGN MOUNTING HARDWARE, INDICATIONS, AND ELECTRICAL COMPONENTS (WIRING, SOLID-STATE CIRCUIT BOARDS, ETC.). THE RRFB ASSEMBLY INCLUDES THE FOLLOWING ITEMS:

1. RRFB INDICATIONS

- A. EACH RRFB INDICATION LENS SHALL BE A MINIMUM SIZE OF APPROXIMATELY 5" WIDE X 2" HIGH.
- B. THE RRFB INDICATIONS SHALL BE ALIGNED HORIZONTALLY, WITH THE LONGER DIMENSION OF THE INDICATION HORIZONTAL. THERE SHALL BE TWO INDICATIONS ON THE FRONT AND TWO INDICATIONS ON THE BACK.
- C. EACH RRFB SHALL BE SUPPLIED WITH ALL REQUIRED HARDWARE TO INSTALL ASSEMBLY. ALL EXPOSED HARDWARE SHALL BE ANTI-VANDAL.

- D. EACH RRFB SHALL BE LOCATED BETWEEN THE BOTTOM OF THE CROSSING WARNING SIGN AND THE TOP OF THE SUPPLEMENTAL DOWNWARD DIAGONAL ARROW PLAQUE.
- E. THE LIGHT INTENSITY OF THE YELLOW INDICATIONS SHALL MEET THE MINIMUM CLASS 1 SPECIFICATIONS OF SOCIETY OF AUTOMOTIVE ENGINEERS (SAE) STANDARD J595 (DIRECTIONAL FLASHING OPTICAL WARNING DEVICES FOR AUTHORIZED EMERGENCY, MAINTENANCE, AND SERVICE VEHICLES) DATED JANUARY, 2005.
- F. TO MINIMIZE EXCESSIVE GLARE DURING NIGHTTIME CONDITIONS, AN AUTOMATIC SIGNAL DIMMING DEVICE SHALL BE USED TO REDUCE THE BRILLIANCE OF THE RRFB INDICATIONS.
- G. An LED PEDESTRIAN CONFIRMATION LIGHT DIRECTED AT AND VISIBLE TO PEDESTRIANS IN THE CROSSWALK SHALL BE INSTALLED INTEGRAL TO THE RRFB OR PUSHBUTTON TO GIVE CONFIRMATION THAT THE RRFB IS IN OPERATION.
- H. THE PEDESTRIAN CONFIRMATION LIGHT SHALL HAVE A MINIMUM AREA OF 0.5 SQUARE INCHES AND BE CONSPICUOUS TO PEDESTRIANS AT ALL DISTANCES FROM THE BEGINNING OF THE CONTROLLED CROSSWALK TO A POINT 10 FEET FROM THE END OF THE CONTROLLED CROSSWALK DURING BOTH DAY AND NIGHT.

2. SIGNS

- A. ALL SIGN ASSEMBLIES SHALL USE ANTI-VANDAL FASTENERS TO MOUNT COMPONENTS TO SIGN AND SIGN TO FIXTURE.
- B. PEDESTRIAN PUSHBUTTONS SIGNS SHALL BE PROVIDED AND INCLUDE THE LEGEND "PUSH BUTTON TO TURN ON WARNING LIGHTS". SIGNS SHOULD BE MOUNTED ADJACENT TO OR INTEGRAL WITH EACH PEDESTRIAN PUSHBUTTON.
- C. TWO SETS OF SIGNS SHALL BE REQUIRED PER UNIT FOR VIEW FROM EACH APPROACH.
- D. ASSURE SIGN MEETS THE REQUIREMENTS OF C&MS 630.

3. CONTROL CIRCUIT

- A. THE CONTROL CIRCUIT SHALL HAVE THE CAPABILITY OF INDEPENDENTLY FLASHING UP T TWO INDEPENDENT OUTPUTS. THE LED LIGHT OUTPUTS AND FLASH PATTERN SHALL BE COMPLETELY PROGRAMMABLE.
- B. THE CONTROL CIRCUIT SHALL BE SEALED WATERTIGHT TO ELIMINATE DIRT CONTAMINATION AND ALLOW FOR SAFE HANDLING IN ALL WEATHER CONDITIONS.
- C. THE LEDS SHALL BE SEALED AGAINST DUST AND MOISTURE INTRUSION AS PER THE REQUIREMENTS OF NEMA STANDARD 250-1991 FOR TYPE 4 ENCLOSURE AND TO PROTECT ALL INTERNAL LED AND ELECTRICAL COMPONENTS.

4. BATTERY AND SOLAR PANELS

- A. BATTERY UNIT SHALL BE A 12VDC, 35 AHR MINIMUM, SEALED GEL OR AGM LEAD ACID BATTERY. BATTERIES SHALL HAVE A WRITTEN TWO YEAR FULL REPLACEMENT WARRANTY.
- B. THE SOLAR PANEL SHALL PROVIDE A MINIMUM OF 40 WATTS PEAK TOTAL OUTPUT.
- C. THE SOLAR PANEL SHALL BE MOUNTED TO AN ALUMINUM PLATE AND BRACKET AT AN ANGLE OF 45 DEGREES - 60 DEGREES TO PROVIDE MAXIMUM OUTPUT.
- D. ALL FASTENERS USED SHALL BE ANTI-VANDAL.

5. WIRELESS RADIO

- A. RADIO CONTROL SHALL OPERATE ON A 900 MHZ FREQUENCY HOPPING SPREAD SPECTRUM NETWORK, WI-FI OR APPROVED EQUAL.
- B. RADIO SHALL INTEGRATE COMMUNICATION OF RRFB CONTROL CIRCUIT TO ACTIVATE SIGN FROM PUSHBUTTON INPUT.
- C. THE RADIO SHALL BE SYNCHRONIZED SO ALL OF THE REMOTE RRFB LIGHT INDICATIONS WILL TURN ON WITHIN 120 MSEC OF EACH OTHER AND REMAIN SYNCHRONIZED THROUGH-OUT THE DURATION OF THE FLASHING CYCLE.

6. PUSHBUTTON

- A. THE PUSHBUTTON SHALL BE CAPABLE OF CONTINUOUS OPERATION OVER A TEMPERATURE RANGE OF -30 DEGREES F TO +165 DEGREES F.
- B. PUSHBUTTON SHALL BE ADA COMPLIANT.

7. PEDESTAL SHAFT AND BASE - MOUNT ON A STANDARD 4.5-INCH OD ALUMINUM PEDESTAL POLE WITH BREAKAWAY BASE. A 14 FOOT POLE SHALL BE PROVIDED AND FIELD ADJUSTED AND CAPPED TO MAINTAIN THE PROPER SIGN MOUNTING HEIGHTS, UNLESS SPECIFIED OTHERWISE IN THE PLANS. POLE AND BASE MANUFACTURER SHALL BE LISTED ON ODOT'S QUALIFIED PRODUCTS LIST.

CONSTRUCTION -
THE RRFB SHALL BE ASSEMBLED AND CONSTRUCTED BY THE CONTRACTOR AS SHOWN AND SPECIFIED ON THE PLANS.

WARRANTY -
WARRANTY SHALL BE TWO YEARS FROM THE DATE OF FINAL ACCEPTANCE.

MEASUREMENT -
THE DEPARTMENT WILL MEASURE THE ITEM COMPLETE IN PLACE, INCLUDING ALL MATERIALS, TESTING, LABOR AND SOFTWARE FOR A FULLY FUNCTIONAL UNIT.

PAYMENT -
PAYMENT WILL BE AT THE CONTRACT UNIT PRICE PER EACH FOR ITEM 630 "SIGNING MISC.: SOLAR POWERED RECTANGULAR RAPID FLASHING BEACON (RRFB) SIGN ASSEMBLY".

DESIGN AGENCY



DESIGNER
ATW

REVIEWER
SLG 11/13/24

PROJECT ID
121063

SHEET TOTAL
P.4 11

ITEM 614, MAINTAINING TRAFFIC

TWO-WAY VEHICULAR TRAFFIC SHALL BE MAINTAINED AT ALL TIMES. ONE-LANE FLAGGING OPERATIONS IN ACCORDANCE WITH SCD MT-97.10 WILL BE PERMITTED AS NECESSARY. IN LOCATIONS WHERE THERE IS AN EXISTING LEFT TURN LANE, CONTRACTOR MAY UTILIZE SCD MT-95.61 TO MAINTAIN TWO-WAY VEHICULAR TRAFFIC, 10-FOOT MINIMUM LANES.

WHEN NO WORK ACTIVITY IS BEING PREFORMED, A MINIMUM OF TWO 10-FOOT TRAVEL LANES (ONE IN EACH DIRECTION) SHALL BE PROVIDED WITH ONE-FOOT SHOULDERS ADJACENT TO CURB OR DRUMS.

LENGTH AND DURATION OF LANE CLOSURES AND RESTRICTIONS SHALL BE AT THE APPROVAL OF THE ENGINEER. IT IS THE INTENT TO MINIMIZE THE IMPACT TO THE TRAVELING PUBLIC. LANE CLOSURES OR RESTRICTIONS OVER SEGMENTS OF THE PROJECT IN WHICH NO WORK IS ANTICIPATED WITHIN A REASONABLE TIME FRAME, AS DETERMINED BY THE ENGINEER, SHALL NOT BE PERMITTED. THE LEVEL OF UTILIZATION OF MAINTENANCE OF TRAFFIC DEVICES SHALL BE COMMENSURATE WITH THE WORK IN

ONE SIDEWALK SHALL BE MAINTAINED AT ALL TIMES.

ALL WORK AND TRAFFIC CONTROL DEVICES SHALL BE IN ACCORDANCE WITH C&MS 614 AND OTHER APPLICABLE PORTIONS OF THE SPECIFICATIONS, AS WELL AS THE OHIO MANUAL OF UNIFORM TRAFFIC CONTROL DEVICES. PAYMENT FOR ALL LABOR, EQUIPMENT AND MATERIALS SHALL BE INCLUDED IN THE LUMP SUM CONTRACT PRICE FOR ITEM 614, MAINTAINING TRAFFIC, UNLESS SEPARATELY ITEMIZED IN THE PLAN.

OVERNIGHT TRENCH CLOSING

THE FULL DEPTH PAVEMENT REPLACEMENT SHALL BE COMPLETED TO A DEPTH OF NO MORE THAN 12 INCHES BELOW THE EXISTING PAVEMENT BY THE END OF EACH WORK DAY. NO TRENCH SHALL BE LEFT OPEN OVERNIGHT EXCEPT FOR A SHORT LENGTH (25 FEET OR LESS) OF A WORK SECTION AT THE END OF THE TRENCH. IN CASE WORK MUST BE SUSPENDED BECAUSE OF INCLEMENT WEATHER OR OTHER REASONS, THE TRENCH FOR THE UNCOMPLETED BASE WIDENING SHALL BE BACKFILLED AT THE DIRECTION OF THE ENGINEER. ANY OPEN TRENCH SHALL BE PROTECTED WITH DRUMS.

DUST CONTROL

THE CONTRACTOR SHALL FURNISH AND APPLY WATER FOR DUST CONTROL AS DIRECTED BY THE ENGINEER. THE FOLLOWING ESTIMATED QUANTITIES HAVE BEEN INCLUDED FOR DUST CONTROL PURPOSES:

ITEM 616, WATER ___ M. GAL.

MAINTENANCE OF DRAINAGE PATHWAYS

THE CONTRACTOR SHALL MAINTAIN ALL EXISTING DRAINAGE PATHWAYS AT ALL TIMES DURING CONSTRUCTION. DRAINAGE PATHWAYS CAN BE MAINTAINED BY USE OF EXISTING, TEMPORARY, AND/OR PERMANENT DRAINAGE FEATURES. COST TO MAINTAIN DRAINAGE PATHWAYS IS TO BE INCLUDED IN THE LUMP SUM ITEM 614 - MAINTAINING TRAFFIC.

DESIGN AGENCY



DESIGNER
ATW

REVIEWER
SLG 11/13/24

PROJECT ID
121063

SHEET TOTAL
P.5 | 11

31942602017001
XIV LLC
180 W OLENTANGY ST

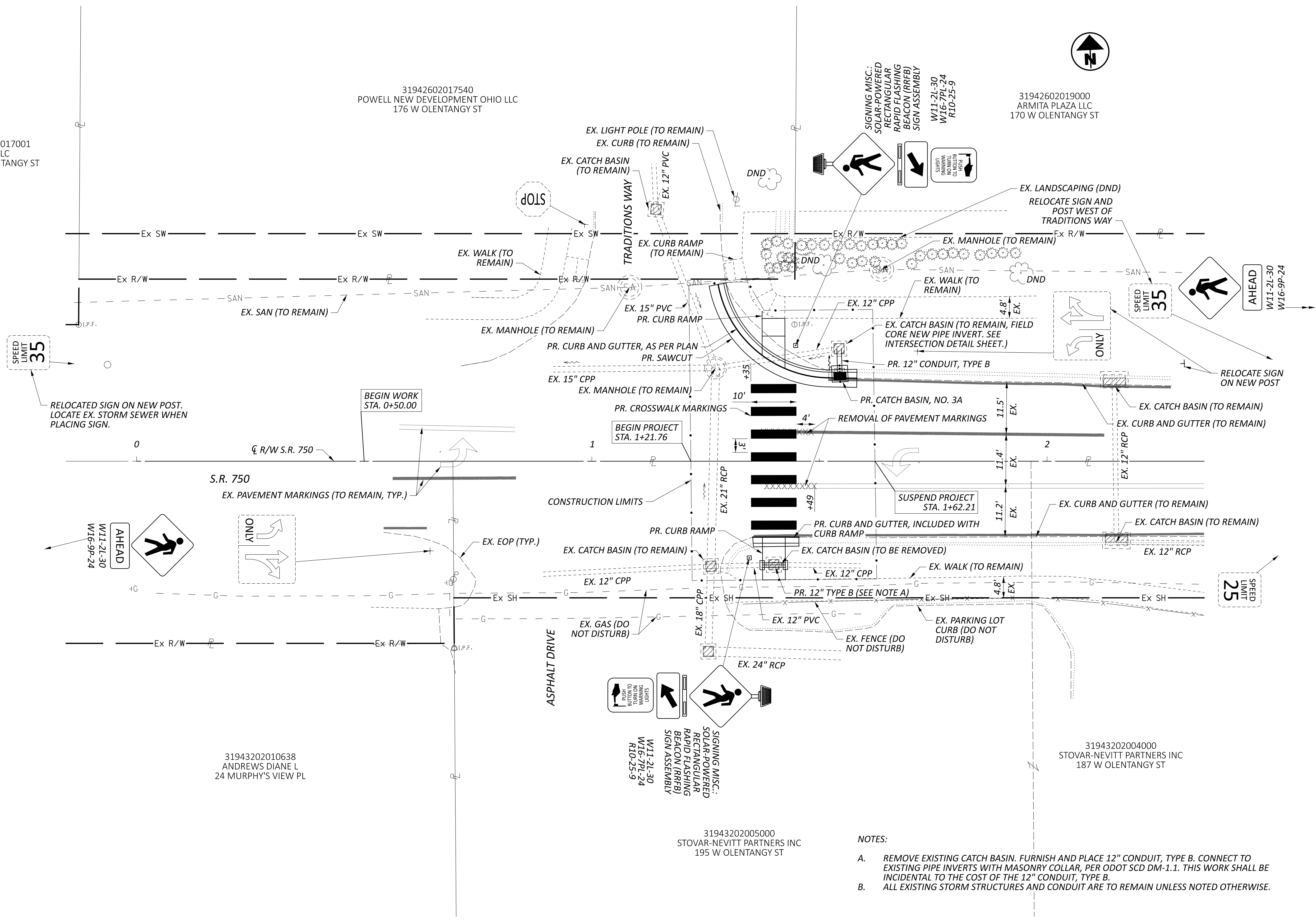
31942602017540
POWELL NEW DEVELOPMENT OHIO LLC
176 W OLENTANGY ST

31942602019000
ARMITA PLAZA LLC
170 W OLENTANGY ST

31943202010638
ANDREWS DIANE L
24 MURPHY'S VIEW PL

31943202005000
STOVAR-NEVITT PARTNERS INC
195 W OLENTANGY ST

31943202004000
STOVAR-NEVITT PARTNERS INC
187 W OLENTANGY ST



NOTES:

- A. REMOVE EXISTING CATCH BASIN. FURNISH AND PLACE 12" CONDUIT, TYPE B. CONNECT TO EXISTING PIPE INVERTS WITH MASONRY COLLAR, PER ODOT SCD DM-1.1. THIS WORK SHALL BE INCIDENTAL TO THE COST OF THE 12" CONDUIT, TYPE B.
- B. ALL EXISTING STORM STRUCTURES AND CONDUIT ARE TO REMAIN UNLESS NOTED OTHERWISE.



PLAN SHEET
TRADITIONS WAY

DESIGN AGENCY



DESIGNER

ATW

REVIEWER

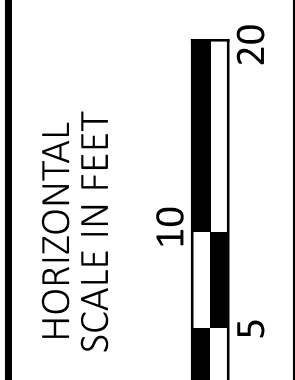
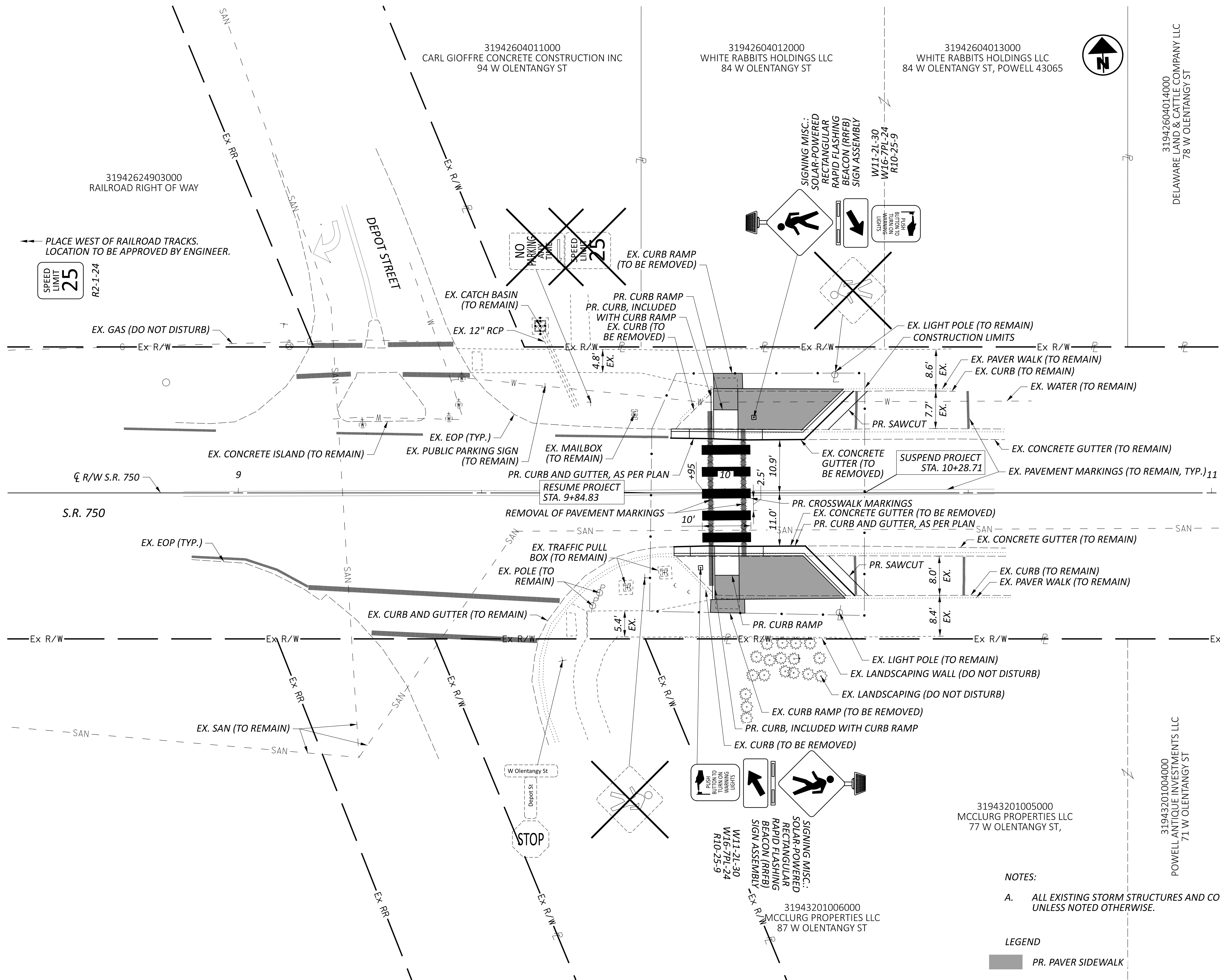
SLG 11/13/24

PROJECT ID

121063

SHEET TOTAL

P.6 11



PLAN SHEET
DEPOT STREET

DESIGN AGENCY



DESIGNER
ATW

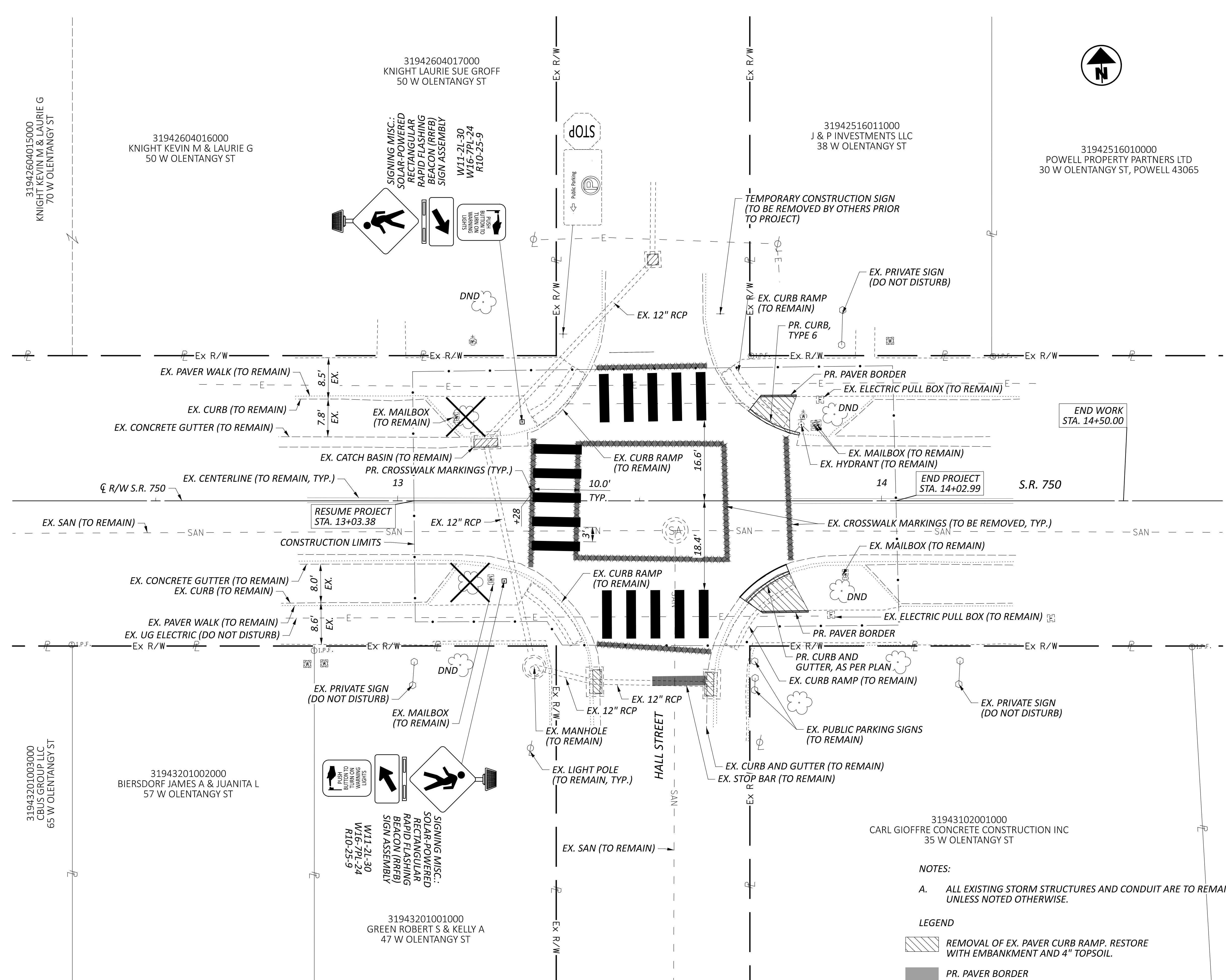
REVIEWER
SLG 11/13/24

PROJECT ID
121063

SHEET TOTAL
P.7 11

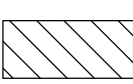

NOTES:
A. ALL EXISTING STORM STRUCTURES AND CONDUIT ARE TO REMAIN UNLESS NOTED OTHERWISE.

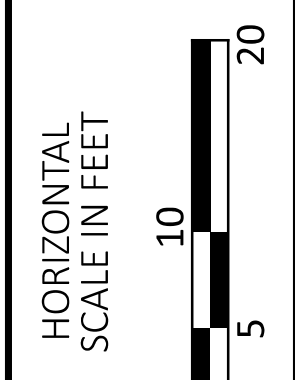
LEGEND
PR. PAVER SIDEWALK




31943102001000
CARL GIOFFRE CONCRETE CONSTRUCTION INC
35 W OLENTANGY ST

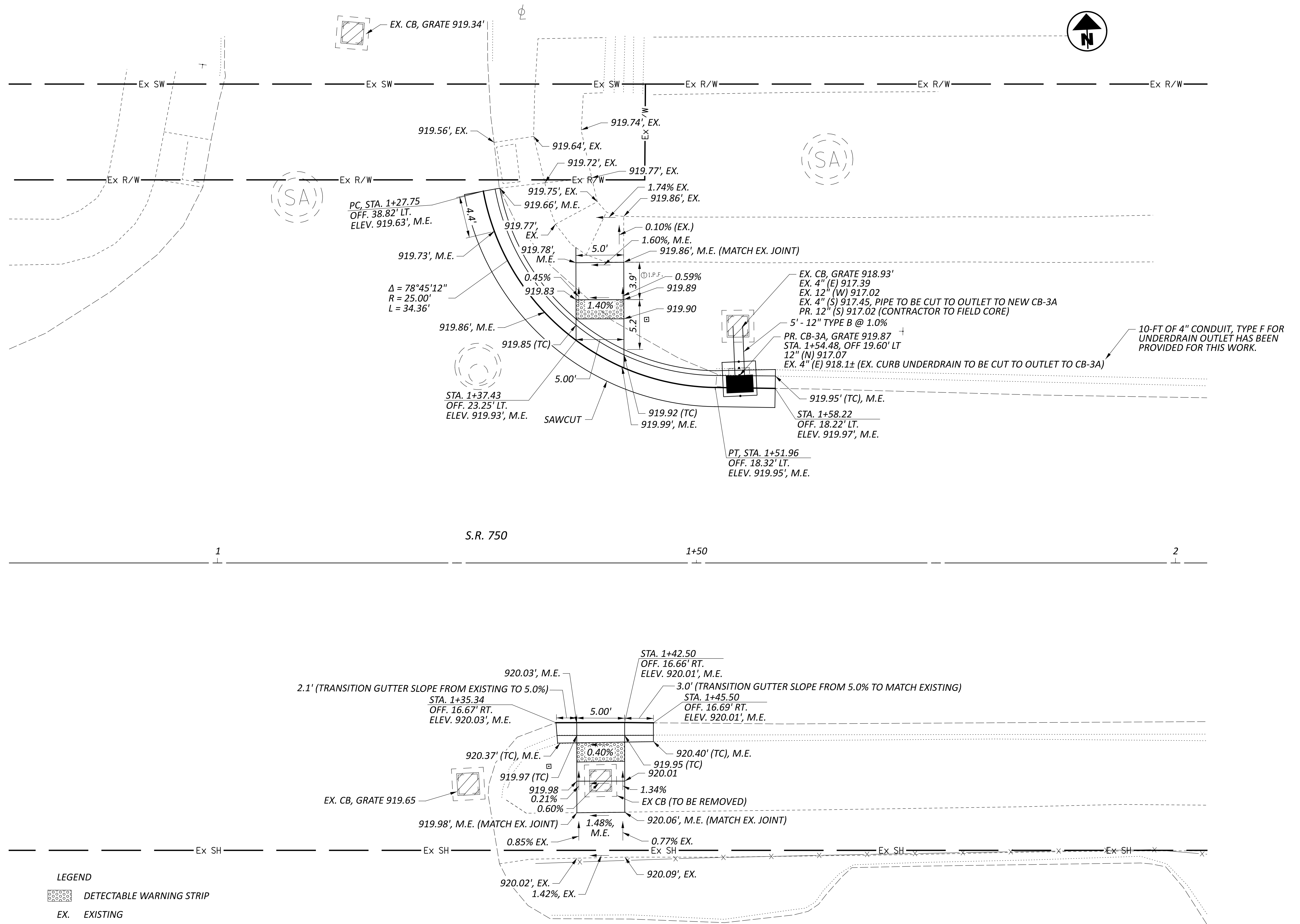
NOTES:
A. ALL EXISTING STORM STRUCTURES AND CONDUIT ARE TO REMAIN UNLESS NOTED OTHERWISE.

LEGEND
 REMOVAL OF EX. PAVER CURB RAMP. RESTORE WITH EMBANKMENT AND 4" TOPSOIL.
 PR. PAVER BORDER



PLAN SHEET
HALL STREET

DESIGN AGENCY	
	
DESIGNER	ATW
REVIEWER	SLG 11/13/24
PROJECT ID	121063
SHEET	TOTAL
P.8	11



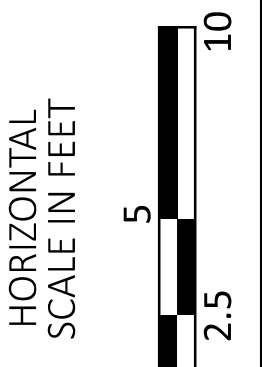
LEGEND

DETECTABLE WARNING STRIP

EX. EXISTING

M.E. MATCH EXISTING

TC TOP OF CURB

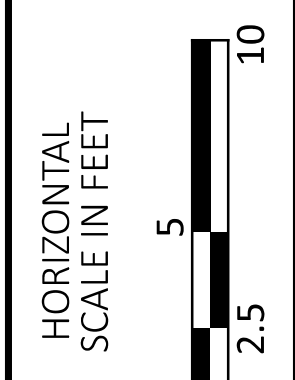
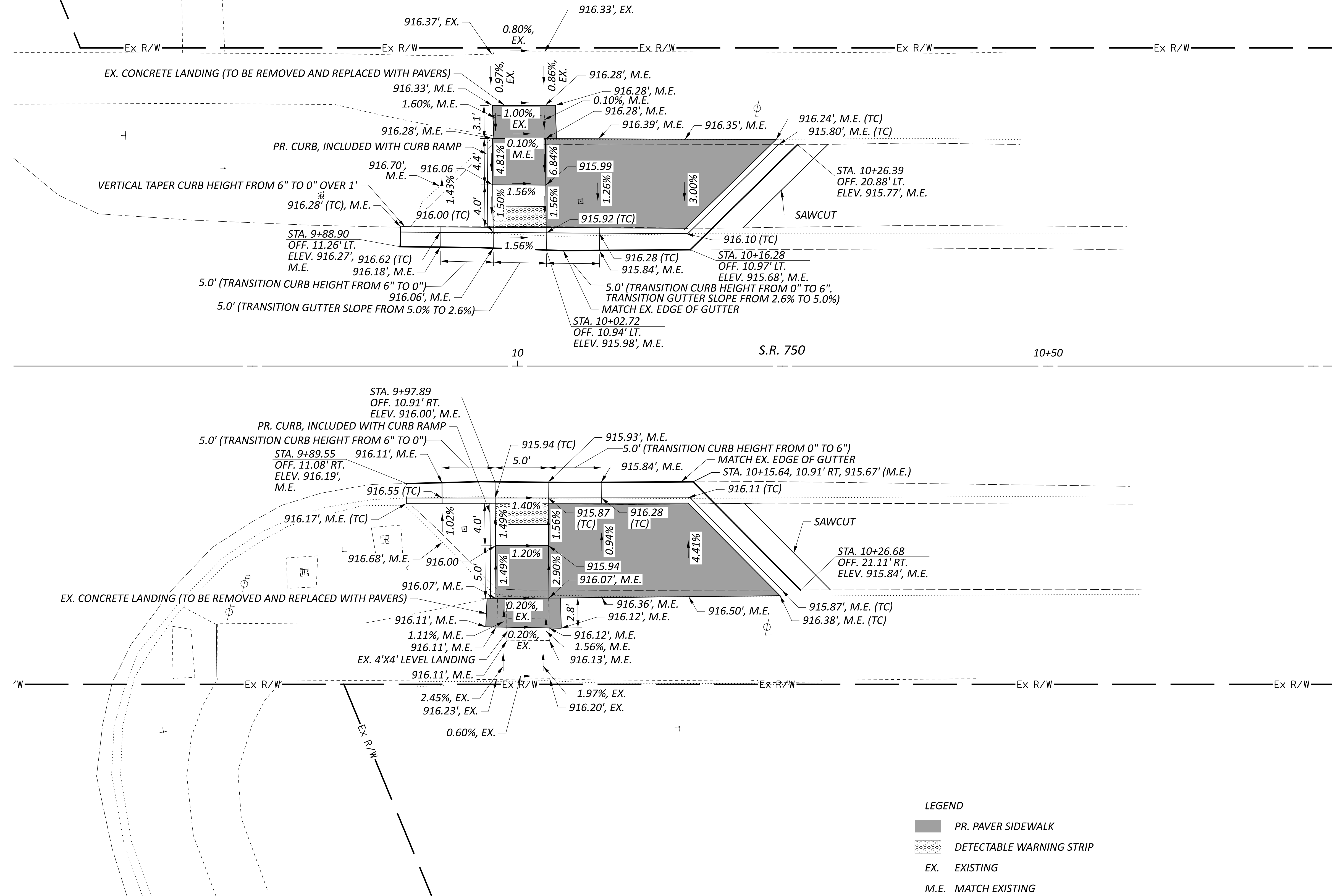


INTERSECTION DETAIL
 TRADITIONS WAY

DESIGN AGENCY



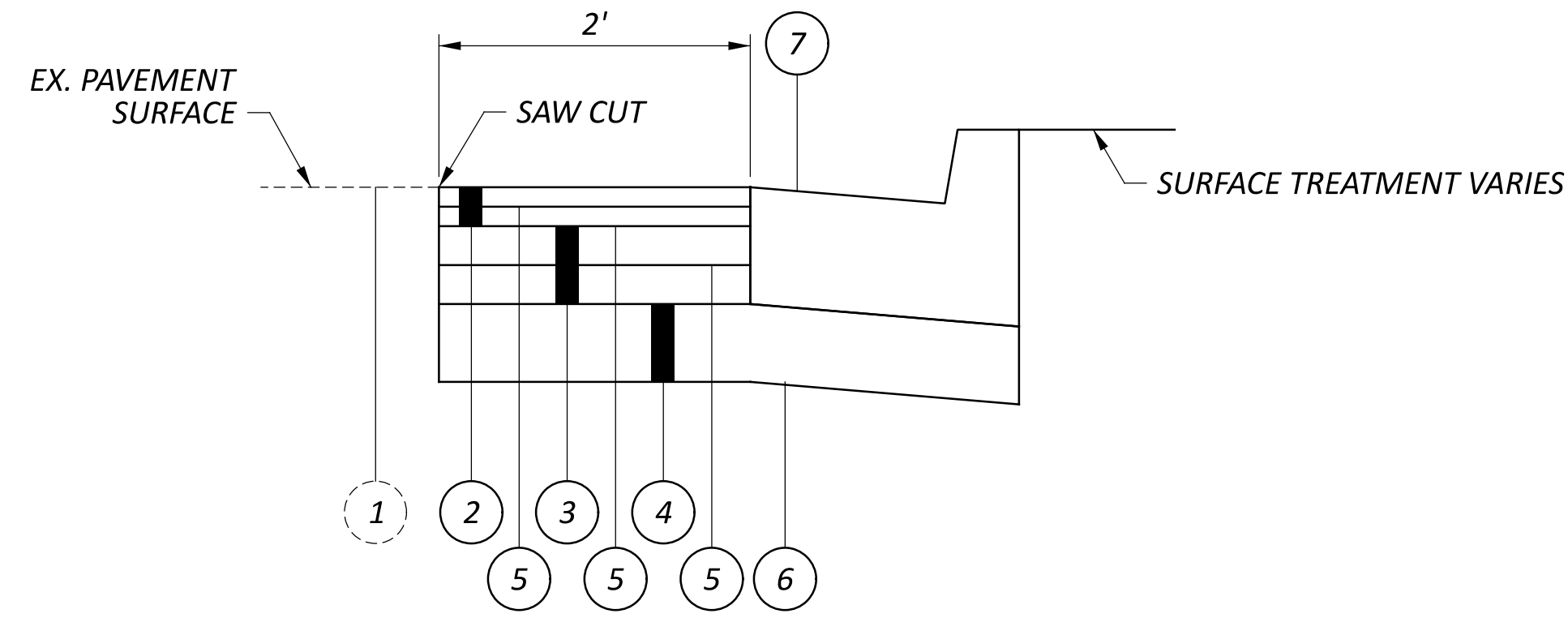
DESIGNER	ATW
REVIEWER	SLG
PROJECT ID	121063
SHEET	P.9
TOTAL	11



INTERSECTION DETAIL
DEPOT STREET

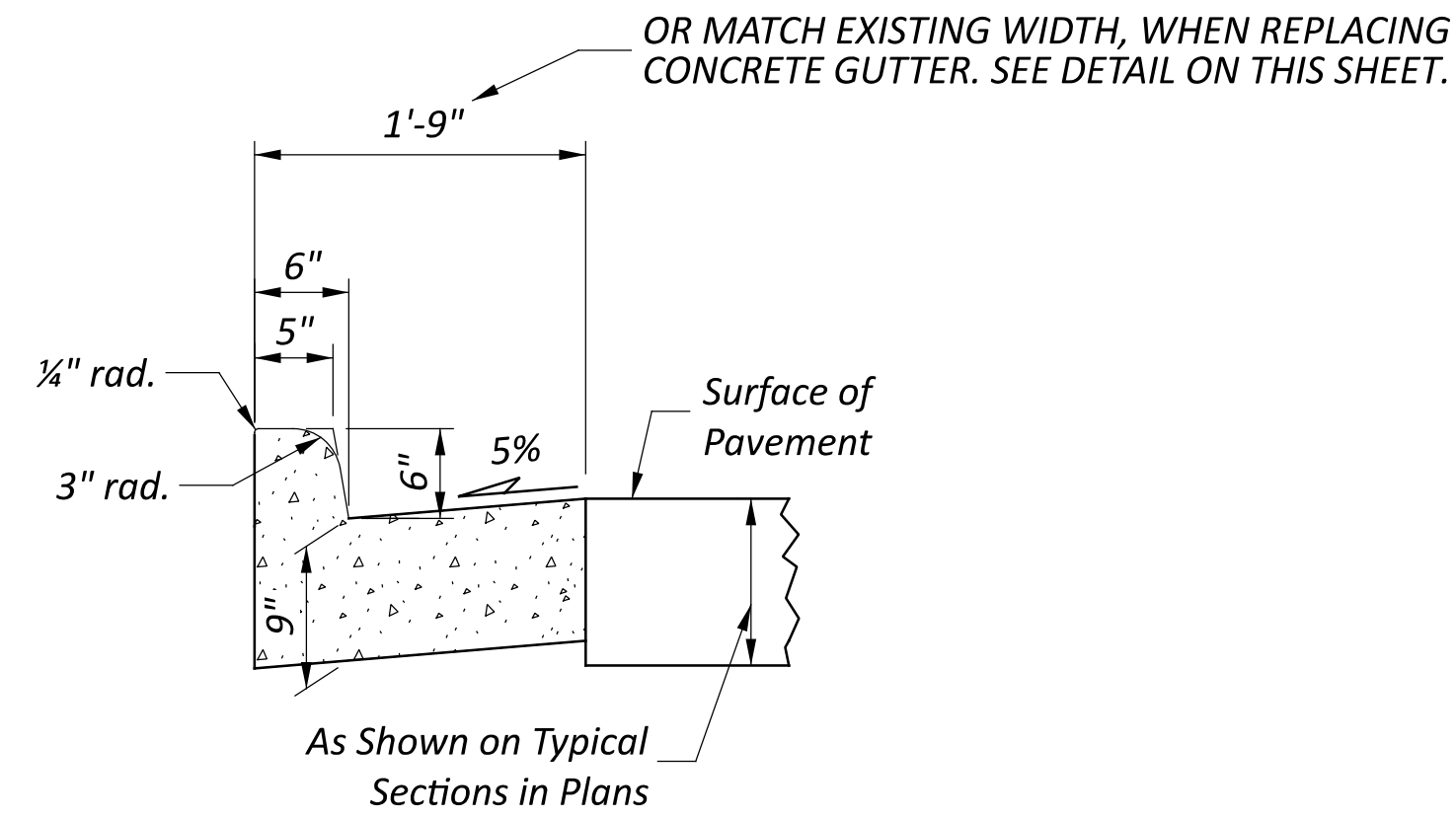
- LEGEND**
- PR. PAVER SIDEWALK
 - DETECTABLE WARNING STRIP
 - EX. EXISTING
 - M.E. MATCH EXISTING
 - TC TOP OF CURB

DESIGN AGENCY	
DESIGNER	ATW
REVIEWER	SLG
PROJECT ID	121063
SHEET	TOTAL
P.10	11

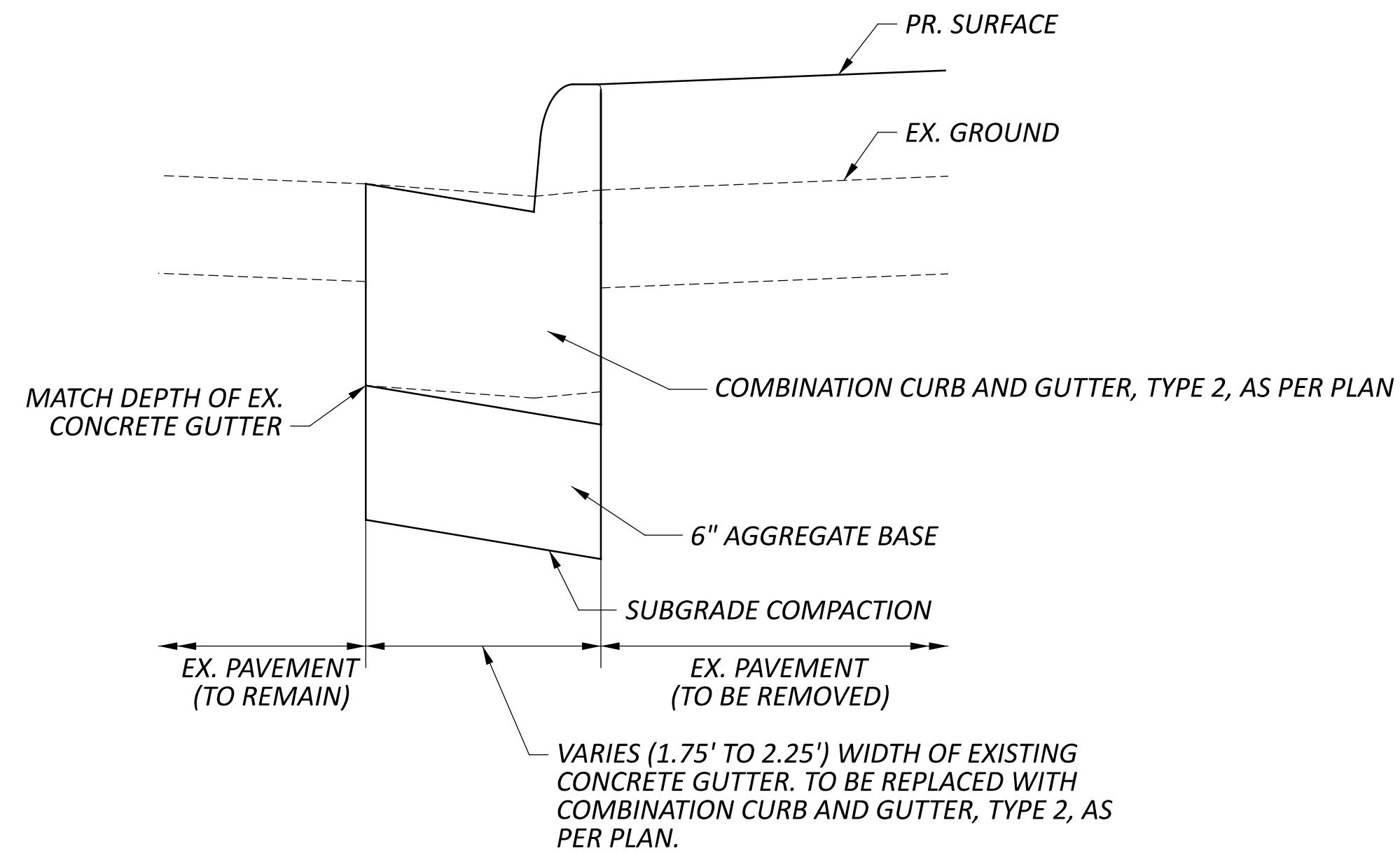


- 1 EXISTING PAVEMENT SURFACE
- 2 ITEM 441 - ASPHALT CONCRETE SURFACE COURSE, TYPE 1, (449), PG64-22 (3.0 INCHES), MAXIMUM 1.5-INCH LIFT
- 3 ITEM 301 - ASPHALT CONCRETE BASE, PG64-22 (449) (6 INCHES), COMPACTED IN TWO LIFTS
- 4 ITEM 304 - AGGREGATE BASE (6 INCHES)
- 5 ITEM 407 - NON-TRACKING TACK COAT (0.06 GAL/SQ. YD.)
- 6 ITEM 204- SUBGRADE COMPACTION
- 7 ITEM 609 - COMBINATION CURB AND GUTTER, TYPE 2, AS PER PLAN

PROPOSED SAWCUT AND CURB SECTION
PROPOSED SAWCUT AND CURB AND GUTTER SECTION



COMBINATION CURB AND GUTTER, AS PER PLAN



REPLACEMENT OF EX. CONCRETE GUTTER